



STATION NEWS

New York State Agricultural Experiment Station, Geneva, New York

VOLUME LXXXIX • NO 16
Aug. 1 - 15, 2008

BRIEFS

Cornell Child Care Grant Subsidy Program

Cornell University's Child Care Grant Subsidy Program helps you pay your child care expenses by granting awards of up to \$5,000 a year, tax-free. You pay your child care provider(s) and Cornell University reimburses you through the Select Benefits Dependent Care Spending Account. For all select benefits-eligible faculty, staff members, and post-doctoral associates with an annual household income of less than \$150,000; the grant covers eligible child care, including infant and toddler day care, pre-school/pre-k programs, school holidays, school age summer day camps/programs, and school age before/after school care. This grant subsidy program helps you explore options and find creative solutions to some of the child care challenges you face.

The Cornell University Child Care Grant Subsidy Program application must be submitted via US Postal Mail and postmarked by September 26, 2008. Go to: <http://www.ohr.cornell.edu/benefits/childcareGrant/index.html>

If you have questions concerning the Cornell University Child Care Grant Subsidy Program, please call (607) 254-KIDS (5437) or childcare@cornell.edu

Note from Geneva H. R.

I have contacted the Program Manager in Ithaca to see if we can arrange for an information session to be held in Geneva. It would be helpful to me if those who may be interested in taking advantage of this program let me know by return email. I'm hoping we'll have a large number of employees attend this session - this will help support

(Continued on page 2)

Justine Vanden Heuvel Awarded Grant from the President's Council of Cornell Women

Justine Vanden Heuvel, assistant professor of viticulture in the Department of Horticultural Sciences was awarded a 2008 Affinito-Stewart grant from the President's Council of Cornell Women to support a project on creating grapevine canopy exposure maps to predict fruit and wine quality. The amount of the award is \$11,820.

"The goal of this work is to determine whether the new exposure maps can be used as a predictor of fruit and wine quality," Vanden Heuvel said. "Jim Meyers, a PhD student in my program, developed a model that adds a number of new metrics to point quadrat analysis, which is a standard method for characterizing grapevine canopy microclimates."

Vanden Heuvel went on to explain that the proposed exposure model has the potential to become a new standard method of calibrating and reproducibly modeling the spatial relationships and sunlight distribution within grapevine canopies. Because it can be used in any growing region, on any grape variety, and with any training system, its adoption has the potential to enable stronger correlations among isolated studies and thus will enhance interregional and international collaboration.

"This new tool also allows production of exposure maps for leaves and clusters in grapevine canopies," she added. "The improved level of precision of the exposure model is expected to provide growers with narrower and more statistically significant correlations between their cultural practices and fruit quality, leading to a more precise understanding of the relationship between cultural practices and wine quality. This, in turn, might enable growers to take more specific, lower input, actions to control the quality of their grapes."

"I am most pleased that Justine is one of four recipients this year for the Affinito-Stewart grants program sponsored by the President's Council of Cornell Women," said Alan Taylor, Horticultural Sciences Chair. "Justine's grant in the field of viticulture was reviewed by 26 faculty across Cornell, and she is the only CALS faculty member to receive this University grant."

The President's Council of Cornell Women (PCCW) was founded in 1990 by then University President Frank H. T. Rhodes with the guiding leadership of University Trustees Lilyan Affinito '53 and Patricia Carry Stewart '50. PCCW is a council comprised of accomplished alumnae. Membership in PCCW is by invitation of the President of the University with a special emphasis on involving alumnae not previously active in alumni organizations.

PCCW's mission is to advance the involvement of women students, faculty, staff, and



J. Vanden Heuvel

(Continued on page 3)



(BRIEFS, continued)

the need for a Geneva session.

Pat Mahoney (pmm19@cornell.edu)

First Phytophthora Blight Field Day to be Held

The first Phytophthora blight field day will be held at the Experiment Station, on Tuesday August 19 from 6:00 pm to 8:30 pm, at the Phytophthora blight research facility at the Crittenden North Research Farm. Tours will be conducted of this year's pepper, squash and pumpkin variety trials, as well as the new facility for studying Phytophthora blight and its management. Attendees will also learn about cover crop trials, which will be conducted at the farm in the future. Additionally, there will be posters and handouts about the basic research being done at Cornell University and the Boyce Thompson Institute to better understand this disease.

Contact Chris Smart (cds14@cornell.edu)

A Day with Grape Germplasm Resources at Geneva

A Day with Grape Germplasm Resources at Geneva will be held August 11 at the Experiment Station. The day is designed to provide an opportunity for regional extension personnel, scientists, interested growers and private breeders to learn more about the extensive grape collections (varieties, rootstocks, and wild *Vitis* species) at Cornell's New York State Agricultural Experiment Station (NYSAES) in Geneva, NY, and what the nine USDA and Cornell scientists involved with grapevine genetics and breeding are doing with it. Contact Nancy Long (NPL1@cornell.edu)

Cornell Organic Research Farm Field Day

Soil quality, vegetable breeding and whole system trials for organic agriculture will be covered.

Explore soil quality and reduced-tillage strategies, sample improved varieties and learn about plant breeding, and discuss

(Continued on page 3)

Cornell at Empire Farm Days 2008

Cornell University's College of Agriculture and Life Sciences (CALS) is gearing up for the annual Empire Farm Days, the largest outdoor agricultural fair in the Northeast.

Crowds will gather August 5-7 in Seneca Falls, NY, to view more than 600 exhibits of the latest agricultural technology and products represented by leading manufacturers, scientists, and ag specialists. Visitors may attend seminars and presentations for all segments of agriculture, from dairy and field crops to horticulture and forestry.

From farm to market, garden to field and classroom to home, the Cornell Center promises something for Empire Farm Days' visitors of all ages. New this year, will be an emphasis on bioenergy. Cornell experts will be on-hand to answer questions about methane digesters, switchgrass production, bio-ethanol, the Northeast Sun Grant Initiative, the new Biofuels Research Laboratory, CURBI, and the future of green energy. Learn how Cornell researchers are expanding sustainable bioenergy options while producing safe, abundant and affordable food, feed, and fiber.

At the over 40 interactive booths, CALS visitors will also find abundant information on everything from wine to cockroaches. Specialists will be on-hand to answer questions on farm management issues, farm transitions, value-added agriculture products, and agriculture issues. The public is encouraged to bring bugs and diseased plants for identification. There will be lots to eat, with samples of New York cheese, apples, wine, fresh-roasted corn, and food products developed with Cornell expertise.

The Cornell Center also guarantees fun for children at an interactive Children's Corner staffed by Cornell Agricultural Outreach and Education students. Young Empire Farm Days attendees will learn about the farm-to-fork food cycle through hands-on, fun activities. New York State FFA and 4-H members will be on hand to assist.

At the "Ask the Experts" tables, visitors will be able to get answers to their questions about Sustainable and Local Food Production, Veterinary Medicine, and Bioenergy resources. Representatives from Cornell Cooperative Extension, Quality Milk Services and the Northeast Organic Farming Association of New York will discuss how to transition dairies to organic production. The Department of Clinical Sciences at Cornell's College of Veterinary Medicine will field animal health questions.

On Wednesday August 6, from 2:30 pm to 4:00 pm, CALS Senior Associate Dean Jan Nyrop will host a reception for Cornell alumni and friends in the Cornell Center. Cold drinks and ice cream from the Cornell Dairy Store will be served during the reception, and John Lincoln, board president of the New York Farm Viability Institute (NYFVI), will make a presentation to some of the 2007 NYFVI awardees.

M. Fessenden



The CALS building at Empire Farm Days 2007 drew big crowds.

(See additional photo on page 3.)



(Grant, continued)

alumnae as leaders within Cornell University and throughout its many constituent communities. In addition, PCCW seeks to engage accomplished alumnae who have not been active in alumni organizations.

PCCW responds to the University President and senior administrators on issues of interest to Cornell women students, faculty, staff and alumnae. PCCW also assists the University in increasing the involvement of the alumnae in leadership roles within the University. Engaging members' individual and collective expertise, PCCW strives to:

- Expand the role of women within groups that establish policy and long-term planning for the University.
- Advise the President on issues important to women as Cornell students, faculty, staff and alumnae.
- Attract and involve women alumnae who are leaders in their chosen fields by strengthening their connection to each other and to the University.
- Assist in attracting outstanding women students, faculty and staff to Cornell, and enhancing their experiences and leadership opportunities.
- Provide guidance and role models for Cornell women who are students, faculty, administrators and alumnae.
- Provide financial support for PCCW and University initiatives, which furthers PCWW's mission and goals.

PCCW extends a special thanks to the Cornell faculty members who review the grant applications each year. The success of women academicians at Cornell truly benefits the entire university community, and PCCW is proud to play a small part in it through this program.

J. Ogrodnick



Food products developed with Cornell expertise were available at Empire Farm Days 2007 and will be again at this year's edition.

(BRIEFS, continued)

whole system demonstrations and the farms that inspired them. Come to Cornell University's Freeville Organic Research Farm Monday, August 18, 4-7 pm in Freeville, NY for this Twilight Event. This is an opportunity to discuss issues in organic agriculture ranging from seed saving to compost use to weed management and rotations. Meet with the researchers and farmers for an evening of demonstrations, collaboration and networking.

For further information, contact Melissa Madden (607) 351-3313, <mailto:mam233@cornell.edu>mam233@cornell.edu or visit <http://www.organic.cornell.edu/>http://www.organic.cornell.edu.

Directions are on the website- <http://www.hort.cornell.edu/organicfarm/about.html> and the farm is easy to find- The Freeville Organic Research Farm comprises 30 acres adjacent to the Homer C. Thompson Vegetable Research Farm in Freeville, NY, about 10 miles north-east of Cornell's Ithaca campus. (Follow Rt. 366 about 1 mile beyond Freeville.)

Veterans Survey

Dear Fellow Cornellians

I am writing on behalf of the university to encourage you to participate in a three-minute survey on veterans in the Workforce. If you haven't completed the survey in the past, please take a moment to do so at: <http://www.ohr.cornell.edu/hr/hrManage/diversity/Vets100/vetSurvey.html>

Once you have filled the survey out, you will not be asked to do so in the future.

For your information, please note:

- If you are a veteran, you can further the university's commitment to inclusiveness and affirmative action by responding to the survey.
- If you are not a veteran, you should still take the survey, answering questions 1 - 8.
- Your responses are strictly confidential, and your name will not be associated with any of the information you provide.

(Continued on page 4)



CALENDAR of EVENTS AUG. 1-15, 2008

CLASSIFIEDS

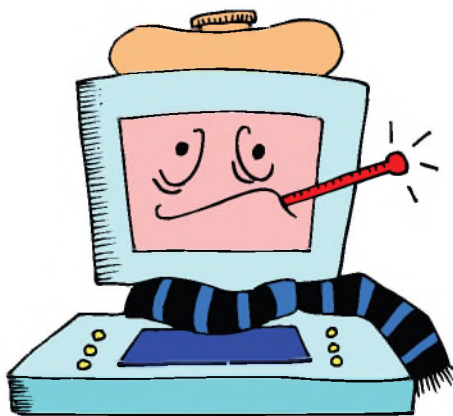
HOUSE FOR SALE: West side, half mile south of Geneva Country Club. Built 1977; new siding, new roof; 4 bedrooms, 2 baths; attached garage; finished walk-out basement. 2800 sq. ft. All rooms have lake view. "Majestic" circulating fireplace. Carpeted throughout. Fruit trees and flowers. Swimming pool 30 miles long, 2 miles wide. Great whale-watching, heron-watching, dawn-watching. Jim & Cindy Cummins, 4233 Glass Factory Bay, (315) 789-7083.

WANTED: House (preferably) or apartment in Geneva area or on lake to rent from 7/30-8/11. For visiting family. Needs at least 2 bedrooms. Please contact Ed Lavin at x2241, 315-789-2106, or ehl2@cornell.edu.

FOR RENT: Small, cozy, unfurnished 2-bedroom house, with washer/dryer, garage. Good neighborhood, close to Hobart & William Smith Colleges and Wegmans supermarket, 1.5 miles from Experiment Station. Ideal for single professional, student or couple. No smoking, no pets. Security deposit required. \$650/month plus utilities. Available immediately. Call Doug (315) 521-3669 or email dck2@cornell.edu.

APARTMENT FOR RENT: 2 bedroom, suitable for one or two adults, with living, dining, bath, dressing room, kitchen, & laundry room. Off-street parking. \$675 per month plus gas and electric. Landlord pays water, sewer, and trash removal. NO PETS, No smokers. Available now. Contact Donna Loeb at x2325 or drr2.

FOR SALE: 28" cut 8 hp Snapper Hi-Vac mower in good condition for \$250; and the other is an older Troybilt Horse tiller, 6 hp for \$400; in good shape. Contact Holly at hlw7 or x2420.



Protecting Computers and Data

In the last few weeks there have been a few computers on campus that have been infected with software that allows those computers to be remotely monitored and used from elsewhere in the world. If your computer is infected with such software it may be difficult to clean up the infection. Data on infected computers is at risk of being stolen.

The recent outbreak of infected PCs has prompted the following reminders.

Cornell pays for licenses for Symantec antivirus software for all computers that connect to Cornell networks and you should take advantage of that. Both Windows and Macintosh users should have up to date antivirus software installed. Although no Macintosh viruses have been reported at NYSAES since Mac OS X has been in use, they do exist elsewhere and could infect

(Continued in next column)

(COMPUTER DATA, continued)

your Macintosh if it's not protected.

Make sure that either you or the computer center backs up your important files weekly or more often if appropriate.

Make sure that you do not store sensitive information such as credit card and social security numbers on your computer. The theft of sensitive information could result in a loss to the University or individuals. If you have a university business need to keep such information, follow the guidelines described at:

<http://www.cit.cornell.edu/security/requirements/secreqs-confidentialdata.html>

Do not share your passwords with others. If you believe your passwords may have been used by others, change them immediately.

Cornell has many resources for helping you safely use and secure your computer. Many of them are linked at:

<http://www.cit.cornell.edu/security>

Please contact the computer center at x2289 for assistance or questions on this.

Ron Pool

(BRIEFS, continued)

The Vietnam Era Veterans' Readjustment Assistance Act (VEVRA) protects the employment interests of Vietnam-era veterans, special disabled veterans, and veterans who served on active duty. Cornell is obligated to comply with federal regulations by implementing affirmative efforts to recruit and employ veterans within its Workforce.

One of the requirements of university compliance is to complete the Vets 100 report, which provides information on the number of veterans throughout Cornell's Workforce and the number of veterans hired within the past year. This on-line survey collects the data necessary for the Vets 100 report.

Contact the Office of Workforce Diversity, Equity and Life Quality at 255-3976 or visit 160 Day Hall for more information or to request a hard copy of the survey.

Thank You,
Darren Jackson



RETIREE NEWS

ATTENTION STATION RETIREES

SAVE THE DATE

September 5 for the Station Retiree's Picnic. Price will be \$4.00 (cheaper than a gallon of gas!). Picnic details will be sent by card within the next few days.

If you are not on the mailing list please contact Sue Dwyer, 781-0360.