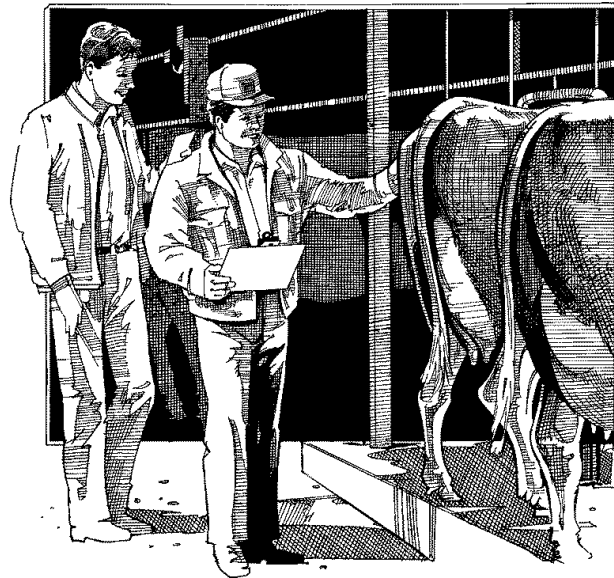


OCTOBER 2004

E.B. 2004-15

DAIRY FARM BUSINESS SUMMARY

CENTRAL VALLEYS REGION 2003



Eddy L. LaDue
Jason Karszes
David Balbian
Charles Z. Radick
A. Edward Staehr
Dayton Maxwell
Linda D. Putnam

Department of Applied Economics and Management
College of Agriculture and Life Sciences
Cornell University, Ithaca, New York 14853-7801

It is the Policy of Cornell University actively to support equality of educational and employment opportunity. No person shall be denied admission to any educational program or activity or be denied employment on the basis of any legally prohibited discrimination involving, but not limited to, such factors as race, color, creed, religion, national or ethnic origin, sex, age or handicap. The University is committed to the maintenance of affirmative action programs which will assure the continuation of such equality of opportunity.

This material is based upon work supported by Smith Lever funds from the Cooperative State Research, Education, and Extension Service, U.S. Department of Agriculture. Any opinions, findings, conclusions, or recommendations expressed in this publication are those of the author(s) and do not necessarily reflect the view of the U.S. Department of Agriculture.

Supported by:



For additional copies, please contact:

The Resource Center
P. O. Box 3884
Ithaca, NY 14852-3884

E-mail: resctr@cornell.edu
Fax: 607-255-9946
Voice: 607-255-2080

Or order on-line with credit card: <http://www.cce.cornell.edu/store>

© Copyright 2004 by Cornell University. All rights reserved.

**2003 DAIRY FARM BUSINESS SUMMARY
CENTRAL VALLEYS REGION
Table of Contents**

	<u>Page</u>
INTRODUCTION	1
Program Objectives	1
Format Features	1
SUMMARY AND ANALYSIS OF THE FARM BUSINESS	2
Business Characteristics	2
Income Statement	2
Profitability Analysis	4
Farm and Family Financial Status	7
Statement of Owner Equity	10
Cash Flow Statement	11
Repayment Analysis	13
Cropping Analysis	15
Dairy Analysis	17
Capital and Labor Efficiency Analysis	19
COMPARATIVE ANALYSIS OF THE FARM BUSINESS	21
Progress of the Farm Business	21
Regional Farm Business Chart	23
Supplementary Information	24
New York State Farm Business Chart	27
Financial Analysis Chart	29
Comparisons by Type of Barn and Herd Size	30
Herd Size Comparisons	30
IDENTIFY AND SET GOALS	37
GLOSSARY AND LOCATION OF COMMON TERMS	39
INDEX	42

2003 DAIRY FARM BUSINESS SUMMARY CENTRAL VALLEYS REGION*

INTRODUCTION

Dairy farm managers throughout New York State have been participating in Cornell Cooperative Extension's farm business summary and analysis program since the early 1950's. Managers of each participating farm business receive a comprehensive summary and analysis of their farm business. The information in this report represents averages of the data submitted from dairy farms in the Central Valleys Region for 2003.

Program Objective

The primary objective of the dairy farm business summary, DFBS, is to help farm managers improve the business and financial management of their business through appropriate use of historical data and the application of modern farm business analysis techniques. This information can also be used to establish goals that enable the business to better fulfill its mission. In short, DFBS provides business and financial information needed in identifying and evaluating strengths and weaknesses of the farm business.

Format Features

This regional report follows the same general format as the 2003 DFBS individual farm report received by participating dairy farmers. The analysis tables have an open column or section labeled My Farm. It may be used by any dairy farm manager who wants to compare his or her business with the average data of this region. The individual farm data, the regional averages and other data can then be used to establish goals for the business. Non-DFBS participants can download a DFBS Data Check-in Form at <http://dfbs.cornell.edu>. After collecting the data on the form, it can be entered in the U. S. Top Dairies business summary program at the same web site to obtain a summary of their business.

This report features:

- (1) an income statement including accrual adjustments for farm business expenses and receipts, as well as measures of profitability with and without appreciation,
- (2) a complete balance sheet with analytical ratios;
- (3) a statement of owner equity which shows the sources of the change in owner equity during the year;
- (4) a cash flow statement and debt repayment ability analysis;
- (5) an analysis of crop acreage, yields, and expenses;
- (6) an analysis of dairy livestock numbers, production, and expenses;
- (7) a capital and labor efficiency analysis; and
- (8) progress of the farm business over the past two years.

*The Central Valleys Region includes Chenango, Herkimer, Madison, Montgomery, Oneida, Onondaga, Oswego, Otsego and Schoharie Counties. This publication includes the following number of farms by county: Schoharie 9, Oneida 3, Herkimer 2, Montgomery 3, Otsego 10, Chenango 2, Madison 2, and Onondaga 3. This summary was prepared by Eddy L. LaDue, Department of Applied Economics and Management, College of Agriculture and Life Sciences, Cornell University. The farm business data were collected by A. Edward Staehr, Cooperative Extension Educator, Onondaga County; David Balbian, Cooperative Extension Educator, Chenango, Herkimer, Otsego, Fulton and Montgomery Counties; Charles Z. Radick, Consultant; and Dayton Maxwell, faculty at SUNY Cobleskill. Jason Karszes assisted with the data collection process. Analysis and data management assistance were provided by Linda D. Putnam.

SUMMARY AND ANALYSIS OF THE FARM BUSINESS

Business Characteristics

Planning optimal management strategies is a crucial component of operating a successful farm. Various combinations of farm resources, enterprises, business arrangements, and management techniques are used by the dairy farmers in this region. The following table shows important farm business characteristics and the number of farms with each characteristic.

BUSINESS CHARACTERISTICS 34 Central Valleys Region Dairy Farms, 2003

Type of Farm	Number	Milking System	Number
Dairy	31	Bucket & carry	0
Part-time dairy	0	Dumping station	1
Dairy cash-crop	3	Pipeline	13
Certified organic milk producer	0	Herringbone conventional exit	11
Rotational grazing farm	5	Herringbone rapid exit	1
		Parallel	4
		Parabone	2
		Rotary	1
		Other	1
Type of Ownership	Number	Production Records	Number
Owner	31	Testing Service	22
Renter	3	On Farm System	1
		Other	0
		None	11
Type of Business	Number	bST Usage	Number
Sole Proprietorship	21	Used consistently	9
Partnership	9	Used inconsistently	3
Limited Liability Corporation	4	Started using in 2003	1
Subchapter S Corporation	0	Stopped using in 2003	2
Subchapter C Corporation	0	Not used in 2003	19
		Average percent usage, if used	71%
Type of Barn	Number	Business Record System	Number
Stanchion or Tie-Stall	14	Account Book	3
Freestall	18	Accounting Service	16
Combination	2	On-farm computer	12
		Other	3
Milking Frequency	Number		
2 times per day	25		
3 times per day	9		
Other	0		
Breed of Herd	Percent		
Holstein	88		
Jersey	6		
Other	6		

The averages used in this report were compiled using data from all the participating dairy farms in this region unless noted otherwise. There are full-time dairy farms, part-time farms, dairy cash-crop farms, farms with confined herds, farms with grazing herds, farm renters, partnerships, and corporations included in the average. Average data for these specific types of farms are presented in the State Business Summary.

Income Statement

In order for an income statement to accurately measure farm income, it must include cash transactions and accrual adjustments (changes in accounts payable, accounts receivable, inventories, and prepaid expenses).

Cash paid is the actual cash outlay during the year and does not necessarily represent the cost of goods and services actually used in 2003.

Change in inventory: Increases in inventories of supplies and other purchased inputs are subtracted in computing accrual expenses because they represent purchased inputs not actually used during the year. Decreases in purchased inventories are added to expenses because they represent inputs purchased in a prior year and used this year.

CASH AND ACCRUAL FARM EXPENSES
34 Central Valleys Region Dairy Farms, 2003

Expense Item	Cash Paid	-	Change in Inven- tory or Prepaid Expense	+	Change in Accounts Payable	=	Accrual Expenses
<u>Hired Labor</u>	\$102,756		\$ 29	<<	\$ 190		\$ 102,917
<u>Feed</u>							
Dairy grain & concentrate	168,937		-5,837		425		175,199
Dairy roughage	4,444		1,025		971		4,390
Nondairy	58		12		0		46
Professional nutritional services	91		0		0		91
<u>Machinery</u>							
Machinery hire, rent & lease	14,278		0	<<	213		14,491
Machinery repairs & farm vehicle exp.	37,532		-1,038		733		39,302
Fuel, oil & grease	17,851		-37		223		18,111
<u>Livestock</u>							
Replacement livestock	6,240		0	<<	106		6,346
Breeding	9,077		-313		90		9,480
Veterinary & medicine	25,394		11		214		25,597
Milk marketing	40,699		0	<<	-259		40,440
Bedding	7,711		-635		-59		8,287
Milking supplies	18,079		-791		336		19,206
Cattle lease & rent	388		0	<<	0		388
Custom boarding	19,901		0	<<	-101		19,800
bST	9,304		242		22		9,085
Livestock professional fees	1,212		194		2		1,020
Other livestock expense	4,439		-10		206		4,654
<u>Crops</u>							
Fertilizer & lime	10,958		-1,543		-221		12,280
Seeds & plants	13,294		-264		-39		13,519
Spray, other crop expense	6,856		686		0		6,170
Crop professional fees	1,110		0		88		1,198
<u>Real Estate</u>							
Land, building & fence repair	5,085		0		231		5,316
Taxes	13,753		0	<<	664		14,417
Rent & lease	14,040		0	<<	76		14,116
<u>Other</u>							
Insurance	7,462		0	<<	25		7,487
Utilities (farm share)	17,653		0	<<	21		17,675
Interest paid	29,027		0	<<	11		29,038
Other professional fees	5,414		0		0		5,414
Miscellaneous	3,894		0		-124		3,770
Total Operating	\$ 616,938		\$ -8,268		\$ 4,044		\$629,250
Expansion livestock	12,027		0	<<	0		12,027
Extraordinary expense	0		0	<<	0		0
Machinery depreciation							48,037
Building depreciation							31,996
TOTAL ACCRUAL EXPENSES							\$721,310

Change in prepaid expenses (noted above by <<) is a net change in non-inventory expenses that have been paid in advance of their use. For example, prepaid lease expense on the beginning of year balance sheet represents last year's payment for use of the asset during this year. End of year prepaid expense represents payments made this year for next year's use of the asset. Adding payments made last year for this year's use of the asset, and subtracting payments made this year for next year's use of the asset is accomplished by subtracting the difference.

Change in accounts payable: An increase in accounts payable from beginning to end of year is added when calculating accrual expenses because these expenses were incurred (resources used) in 2003 but not paid for. A decrease is subtracted because it represents payment for resources used before 2003.

Accrual expenses are an estimate of the costs of inputs, except operator/family labor and equity capital, actually used in this year's production. They are the cash paid, less changes in inventory and prepaid expenses, plus accounts payable.

CASH AND ACCRUAL FARM RECEIPTS
34 Central Valleys Region Dairy Farms, 2003

Receipt Item	Cash Receipts	+	Change in Inventory	+	Change in Accounts Receivable	=	Accrual Receipts
Milk sales	\$ 648,803				\$ 6,117		\$ 654,920
Dairy cattle	25,618		\$ 10,884		0		36,502
Dairy calves	7,594		3,203		0		10,797
Other livestock	223		137		-24		336
Crops	12,249		11,700		3,368		27,317
Government receipts	32,270		382 *		-2,111		30,541
Custom machine work	4,757				557		5,313
Gas tax refund	82				0		82
Other	<u>9,988</u>				<u>-43</u>		9,945
Less nonfarm noncash capital**		(-)	<u>0</u> **			(-)	<u>0</u>
Total Receipts	\$ 741,584		\$ 26,305		\$ 7,864		\$ 775,753

*Change in advanced government receipts is subtracted.

**Gifts or inheritances of cattle or crops included in inventory.

Cash receipts include the gross value of milk checks received during the year plus all other payments received from the sale of farm products, services, and government programs. Nonfarm income is not included in calculating farm profitability.

Changes in inventory of assets produced by the business are calculated by subtracting beginning of year values from end of year values excluding appreciation. Increases in livestock inventory caused by herd growth and/or quality are added, and decreases caused by herd reduction and/or quality are subtracted. Changes in inventories of crops grown are also included. The change in advanced government receipts is subtracted from cash income because it represents income received in 2003 for the 2004 crop year.

Changes in accounts receivable are calculated by subtracting beginning year balances from end year balances. Payments in January 2004 for milk produced in December 2003 compared to January 2003 payments for milk produced in 2002 are included as a change in accounts receivable in determining accrual milk sales.

Accrual receipts represent the value of all farm commodities produced and services actually generated by the farm business during the year.

Profitability Analysis

Farm operators* contribute labor, management, and equity capital to their businesses and the combination of these resources, and the other resources used in the business, determines profitability. Farm profitability can be measured as the return to all family resources or as the return to one or more individual resources such as labor and management.

The return to any individual resource must be viewed as an estimate because the cost of other family resources must be approximated to calculate returns to the selected resource. For example, the costs of operator and family labor and management must be approximated to calculate the returns to equity capital.

* Operators are the individuals who are integrally involved in the operation and management of the farm business. They are not limited to those who are the owner of a sole proprietorship or are formally a member of the partnership or corporation. They do not receive a wage. Their income comes from the net earnings of the business.

Net farm income is the return to the farm operators and other unpaid family members for their labor, management, and equity capital. It is the farm family's net annual return from working, managing, and financing the farm business. This is not a measure of cash available from the year's business operation. Cash flow is evaluated later in this report.

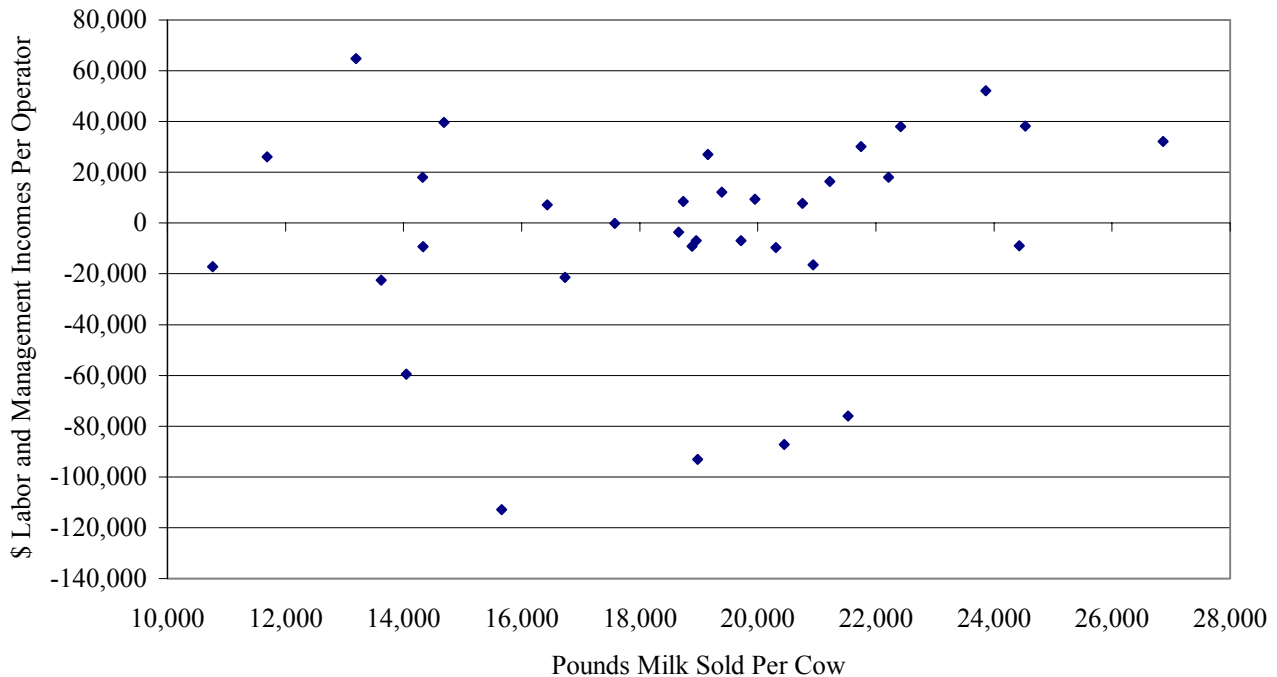
Net farm income is computed both with and without appreciation. Appreciation represents the change in values caused by annual changes in prices of livestock, machinery, real estate inventory, and stocks and certificates (other than Farm Credit stock required for loan borrowings). Appreciation is a major factor contributing to changes in farm net worth and must be included for a complete profitability analysis.

NET FARM INCOME
34 Central Valleys Region Dairy Farms, 2003

Item	Average		My Farm	
	Total	Per Cow	Total	Per Cow
Total accrual receipts	\$ 775,753		\$ _____	
Appreciation: Livestock	18,737		_____	
Machinery	17,219		_____	
Real Estate	26,311		_____	
Other Stock & Certificates	481		_____	
Total Including Appreciation	\$ 838,501		\$ _____	
Total accrual expenses	- 721,310		- _____	
Net Farm Income (with appreciation)	\$ 117,191	\$ 494	\$ _____	\$ _____
Net Farm Income (without appreciation)	\$ 54,443	\$ 230	\$ _____	\$ _____

The chart below shows the relationship between labor and management incomes per operator and pounds of milk sold per cow. Higher labor and management incomes can be achieved across a range of production levels as a result of different management systems, such as grazing, being utilized by the participating dairies.

LABOR AND MANAGEMENT INCOMES PER OPERATOR AND MILK PER COW
34 Central Valleys Region Dairy Farms, 2003



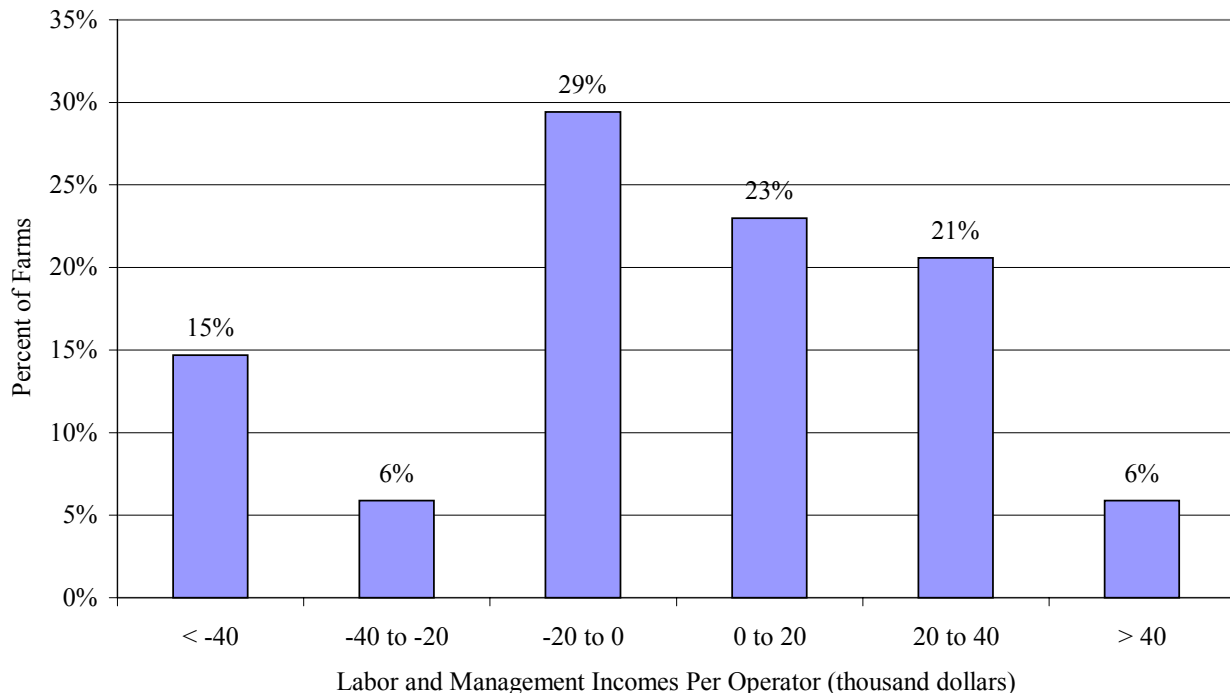
Labor and management income is the return which farm operators receive for their labor and management used in the farm business. Appreciation is not included as part of the return to labor and management because it results from ownership of assets rather than management of the farm business. Labor and management income is calculated by deducting a charge for unpaid family labor and the opportunity cost of equity capital, at a real interest rate of five percent, from net farm income excluding appreciation. The interest charge of five percent reflects the long-term average rate of return above inflation that a farmer might expect to earn in comparable risk investments.

LABOR AND MANAGEMENT INCOME
34 Central Valleys Region Dairy Farms, 2003

Item	Average	My Farm
Net farm income without appreciation	\$ 54,443	\$ _____
Family labor unpaid @ \$2,200 per month	- 4,439	- _____
Interest on \$984,611 average equity capital @ 5% real rate	- 49,231	- _____
Labor & Management Income per farm (1.83 Operators/farm)	\$ 773	\$ _____
Labor & Management Income per Operator/Manager	\$ 422	\$ _____

Labor and management income per operator averaged \$422 on these 34 farms in 2003. The range in labor and management incomes per operator was from about \$-112,000 to more than \$64,000. Returns to labor and management were negative on 50 percent of the farms. Labor and management incomes per operator were between \$0 and \$20,000 on 23 percent of the farms while 27 percent showed labor and management incomes of \$20,000 or more per operator.

DISTRIBUTION OF LABOR AND MANAGEMENT INCOMES PER OPERATOR
34 Central Valleys Region Dairy Farms, 2003



Return on equity capital measures the net return remaining for the farmer's equity or owned capital after a charge has been made for the owner-operator's labor and management. The earnings or amount of net farm income allocated to labor and management is the opportunity cost of operators' labor and management estimated by the cooperators. Return on equity capital is calculated with and without appreciation. The rate of return on equity capital is determined by dividing the amount returned by the average farm net worth (market value) or equity capital. Rate of return on total capital is calculated by adding interest paid to the return on equity capital and then dividing by average farm assets (market value). Net farm income from operations ratio is net farm income (without appreciation) divided by total accrual receipts.

RETURN ON EQUITY CAPITAL AND RETURN ON TOTAL CAPITAL
34 Central Valleys Region Dairy Farms, 2003

Item	Average	My Farm
Net farm income with appreciation	\$ 117,191	\$ _____
Family labor unpaid @\$2,200 per month	- 4,439	- _____
Value of operators' labor & management	<u>- 57,618</u>	- _____
Return on equity capital with appreciation	\$ 55,134	\$ _____
Interest paid	<u>+ 29,038</u>	+ _____
Return on total capital with appreciation	\$ 84,172	\$ _____
Return on equity capital without appreciation	\$ -7,614	\$ _____
Return on total capital without appreciation	\$ 21,424	\$ _____
Rate of return on average equity capital:		
with appreciation	5.6%	_____ %
without appreciation	-0.8%	_____ %
Rate of return on average total capital:		
with appreciation	5.0%	_____ %
without appreciation	1.3%	_____ %
Net Farm Income from Operations Ratio	0.07	_____

Farm and Family Financial Status

The first step in evaluating the financial position of the farm is to construct a balance sheet which identifies and values all the assets and liabilities of the business. The second step is to evaluate the relationship between assets, liabilities, and net worth and changes that occurred during the year.

Financial lease obligations are included in the balance sheet. The present value of all future payments is listed as a liability since the farmer is committed to make the payments by signing the lease. The present value is also listed as an asset, representing the future value the item has to the business during the lease period. For 2003, lease payments were discounted by 5.5 percent to obtain their present value.

Advanced government receipts are included as current liabilities because they represent a payment received that would have to be repaid if the business ceased operation. Government payments received in 2003 that are for participation in the 2004 program are the end year balance and payments received in 2002 for participation in the 2003 program are the beginning year balance.

Current Portion or principal due in the next year for intermediate and long term debt is included as a current liability.

2003 FARM BUSINESS & NONFARM MARKET VALUE BALANCE SHEET
34 Central Valleys Region Dairy Farms, 2003

Farm Assets	Jan. 1	Dec. 31	Farm Liabilities & Net Worth	Jan. 1	Dec. 31
<u>Current</u>			<u>Current</u>		
Farm cash, checking & savings	\$ 10,366	\$ 13,764	Accounts payable	\$ 12,262	\$ 16,306
Accounts receivable	48,074	55,939	Operating debt	40,278	47,437
Prepaid expenses	424	647	Short Term	1,396	2,330
Feed & supplies	153,855	157,063	Advanced govt. receipts	382	0
			Current Portion:		
			Intermediate	51,861	51,958
			Long Term	37,637	36,102
Total Current	\$ 212,719	\$ 227,413	Total Current	\$143,816	\$ 154,133
<u>Intermediate</u>			<u>Intermediate</u>		
Dairy cows:			Structured debt		
owned	\$ 273,440	\$ 298,878	1-10 years	\$ 249,291	\$ 202,414
leased	0	0	Financial lease		
Heifers	140,838	148,214	(cattle/machinery)	4,818	2,693
Bulls & other livestock	1,132	1,278	Farm Credit stock	2,705	2,786
Mach. & equip. owned	301,019	307,915	Total Intermediate	\$ 256,814	\$ 207,893
Mach. & equip. leased	4,818	2,693			
Farm Credit stock	2,705	2,786			
Other stock/certificate	18,397	21,832			
Total Intermediate	\$ 742,349	\$ 783,596			
<u>Long Term</u>			<u>Long Term</u>		
Land & buildings:			Structured debt		
owned	\$ 702,014	\$ 720,482	>10 years	\$ 308,717	\$ 347,975
leased	0	0	Financial lease		
Total Long Term	\$ 702,014	\$ 720,482	(structures)	0	0
			Total Long Term	\$ 308,717	\$ 347,975
Total Farm Assets	\$1,657,082	\$1,731,491	Total Farm Liabilities	\$ 709,347	\$ 710,001
			FARM NET WORTH	\$ 947,735	\$1,021,490

Nonfarm Assets, Liabilities & Net Worth (Average of 18 farms reporting)

Assets	Jan. 1	Dec. 31	Liabilities & Net Worth	Jan. 1	Dec. 31
Personal cash, checking & savings	\$ 1,672	\$ 2,835	Nonfarm Liabilities	\$ 9,618	\$ 8,735
Cash value life insurance	19,703	20,691			
Nonfarm real estate	14,806	14,806			
Auto (personal share)	8,773	8,778			
Stocks & bonds	25,171	27,844			
Household furnishings	12,111	12,111			
All other nonfarm assets	7,561	5,879			
Total Nonfarm Assets	\$ 89,797	\$ 92,944	NONFARM NET WORTH	\$ 80,179	\$ 84,209

Farm & Nonfarm Assets, Liabilities, and Net Worth*	Jan. 1	Dec. 31
Total Assets	\$1,746,879	\$1,824,435
Total Liabilities	718,965	718,736
TOTAL FARM & NONFARM NET WORTH	\$1,027,914	\$1,105,699

*Assumes that average nonfarm assets and liabilities for the nonreporting farms were the same as for those reporting.

Balance sheet analysis involves examination of relative asset and debt levels for the business. Percent equity is calculated by dividing net worth by assets and multiplying by 100. The debt to asset ratio is compiled by dividing liabilities by assets. Low debt to asset ratios reflect business solvency and the potential capacity to borrow. The leverage ratio is the dollars of debt per dollar of equity, computed by dividing total farm liabilities by farm net worth. Debt levels per productive unit represent old standards that are still useful if used with measures of cash flow and repayment ability. A current ratio of less than 1.5 or that has been falling warrants additional evaluation. The amount of working capital that is adequate must be related to the size of the farm business.

BALANCE SHEET ANALYSIS

34 Central Valleys Region Dairy Farms, December 31, 2003

Item	Average		My Farm	
<u>Financial Ratios - Farm:</u>				
Percent equity		59%	_____	%
Debt/asset ratio: total		.41	_____	
long-term		.48	_____	
intermediate/current		.36	_____	
Leverage Ratio:		.70	_____	
Current Ratio:		1.48	_____	
Working capital	\$73,280	As % of total expenses:	10%	
<u>Farm Debt Analysis:</u>				
Accounts payable as % of total debt		2%	_____	%
Long-term liabilities as a % of total debt		49%	_____	%
Current & inter. liabilities as a % of total debt		51%	_____	%
Cost of term debt (weighted average)		4.7%	_____	%
<u>Farm Debt Levels:</u>				
	<u>Per Cow</u>	<u>Per Tillable Acre Owned</u>	<u>Per Cow</u>	<u>Per Tillable Acre Owned</u>
Total farm debt	\$ 2,898	\$ 2,669	\$ _____	\$ _____
Long-term debt	1,420	1,308	_____	_____
Intermediate & long term	2,269	2,090	_____	_____
Intermediate & current debt	1,478	1,361	_____	_____

Farm inventory balance is an accounting of the value of assets used on the balance sheet and the changes that occur from the beginning to end of year. Changes in the livestock inventory are included in the dairy analysis. Net investment indicates whether the capital stock is being expanded (positive) or depleted (negative).

FARM INVENTORY BALANCE

34 Central Valleys Region Dairy Farms, 2003

Item	Average of Region's Farms	
	Real Estate	Machinery & Equipment
Value beginning of year	\$ 702,014	\$ 301,019
Purchases	\$ 29,916*	\$ 41,277
Gift & inheritance	+ 0	+ 0
Lost capital	- 5,556	
Sales	- 206	- 3,563
Depreciation	- 31,996	- 48,037
Net investment	= -7,842	= -10,323
Appreciation	+ 26,311	+ 17,219
Value end of year	\$ 720,482	\$ 307,915

*\$6,274 land and \$23,642 buildings and/or depreciable improvements.

The Statement of Owner Equity has two purposes. It allows (1) verification that the accrual income statement and market value balance sheet are consistent (in accountants terms, they reconcile) and (2) identification of the causes of change in equity that occurred on the farm during the year. The Statement of Owner Equity allows you to determine to what degree the change in equity was caused by (1) earnings from business and nonfarm income, in excess of withdrawals, that is being retained in the business (called retained earnings), (2) outside capital being invested in the business or farm capital being removed from the business (called contributed/withdrawn capital), (3) increases or decreases in the value (price) of assets owned by the business (called change in valuation equity), and (4) the error in the business cash flow accounting.

Retained earnings is an excellent indicator of farm generated financial progress.

STATEMENT OF OWNER EQUITY (RECONCILIATION)

34 Central Valleys Region Dairy Farms, 2003

Item	Average	My Farm
Beginning of year farm net worth	\$947,735	\$ _____
Net farm income without appreciation	\$ 54,443	\$ _____
+Nonfarm cash income	+ 7,773	+ _____
-Personal withdrawals & family expenditures excluding nonfarm borrowings	<u>- 57,501</u>	- _____
RETAINED EARNINGS	+ \$ 4,715	+\$ _____
Nonfarm noncash transfers to farm	\$ 0,	\$ _____
+Cash used in business from nonfarm capital	+ 11,193	+ _____
-Note or mortgage from farm real estate sold (nonfarm)	<u>- 0</u>	- _____
CONTRIBUTED/WITHDRAWN CAPITAL	+ \$ 11,193	+\$ _____
Appreciation	\$ 62,748	\$ _____
-Lost capital	<u>- 5,556</u>	- _____
CHANGE IN VALUATION EQUITY	+ \$ 57,192	+\$ _____
IMBALANCE/ERROR	<u>- -655</u>	- \$ _____
End of year net worth*	=\$1,021,490	=\$ _____
<hr/>		
<u>Change in Net Worth</u>		
Without appreciation	\$ 11,007	\$ _____
With appreciation	\$ 73,755	\$ _____

*May not add due to rounding.

Cash Flow Statement

Completing an annual cash flow statement is an important step in understanding the sources and uses of funds for the business. Understanding last year's cash flow is the first step toward planning and managing cash flow for the current and future years.

The annual cash flow statement is structured to show net cash provided by operating activities, investing activities, financing activities and from reserves. All cash inflows and outflows, including beginning and ending balances, are included. Therefore, the sum of net cash provided from all four activities should be zero. Any imbalance is the error from incorrect accounting of cash inflows/outflows.

ANNUAL CASH FLOW STATEMENT
34 Central Valleys Region Dairy Farms, 2003

Item	Average	
<u>Cash Flow from Operating Activities</u>		
Cash farm receipts	\$ 741,584	
- Cash farm expenses	616,938	
- Extraordinary expense	<u>0</u>	
= Net cash farm income		\$ 124,646
Personal withdrawals & family expenses including nonfarm debt payments	\$ 57,577	
- Nonfarm income	<u>7,773</u>	
- Net cash withdrawals from the farm		<u>\$ 49,804</u>
= Net Provided by Operating Activities		\$ 74,842
<u>Cash Flow From Investing Activities</u>		
Sale of assets: machinery	\$ 3,563	
+ real estate	206	
+ other stock & cert.	<u>1,240</u>	
= Total asset sales		\$ 5,009
Capital purchases: expansion livestock	\$ 12,027	
+ machinery	41,277	
+ real estate	29,916	
+ other stock & cert.	<u>4,193</u>	
- Total invested in farm assets		<u>\$ 87,413</u>
= Net Provided by Investment Activities		\$ -82,404
<u>Cash Flow From Financing Activities</u>		
Money borrowed (intermediate & long term)	\$ 120,194	
+ Money borrowed (short term)	3,024	
+ Increase in operating debt	7,159	
+ Cash from nonfarm capital used in business	11,193	
+ Money borrowed - nonfarm	<u>76</u>	
= Cash inflow from financing		\$ 141,646
Principal payments (intermediate & long term)	\$ 129,250	
+ Principal payments (short term)	2,091	
+ Decrease in operating debt	<u>0</u>	
- Cash outflow for financing		<u>\$ 131,341</u>
= Net Provided by Financing Activities		\$ 10,305
<u>Cash Flow From Reserves</u>		
Beginning farm cash, checking & savings		\$ 10,366
- Ending farm cash, checking & savings		<u>13764</u>
= Net Provided from Reserves		\$ -3,398
Imbalance (error)		<u>\$ -655</u>

ANNUAL CASH FLOW STATEMENT

Item	My Farm	
<u>Cash Flow from Operating Activities</u>		
Cash farm receipts	\$ _____	
- Cash farm expenses	_____	
- Extraordinary expense	_____	
= Net cash farm income		\$ _____
Personal withdrawals & family expenses including nonfarm debt payments	\$ _____	
- Nonfarm income	_____	
- Net cash withdrawals from the farm		\$ _____
= Net Provided by Operating Activities		\$ _____
<u>Cash Flow From Investing Activities</u>		
Sale of assets: machinery	\$ _____	
+ real estate	_____	
+ other stock & cert.	_____	
= Total asset sales		\$ _____
Capital purchases: expansion livestock	\$ _____	
+ machinery	_____	
+ real estate	_____	
+ other stock & cert.	_____	
- Total invested in farm assets		\$ _____
= Net Provided by Investment Activities		\$ _____
<u>Cash Flow From Financing Activities</u>		
Money borrowed (intermediate & long term)	\$ _____	
+ Money borrowed (short term)	_____	
+ Increase in operating debt	_____	
+ Cash from nonfarm capital used in business	_____	
+ Money borrowed - nonfarm	_____	
= Cash inflow from financing		\$ _____
Principal payments (intermediate & long term)	\$ _____	
+ Principal payments (short term)	_____	
+ Decrease in operating debt	_____	
- Cash outflow for financing		\$ _____
= Net Provided by Financing Activities		\$ _____
<u>Cash Flow From Reserves</u>		
Beginning farm cash, checking & savings	\$ _____	
- Ending farm cash, checking & savings	_____	
= Net Provided from Reserves		\$ _____
Imbalance (error)		\$ _____

Repayment Analysis

A valuable use of cash flow analysis is to compare the debt payments planned for the last year with the amount actually paid. The measures listed below provide a number of different perspectives on the repayment performance of the business. However, the critical question to many farmers and lenders is whether planned payments can be made in 2004. The cash flow projection worksheet on the next page can be used to estimate repayment ability, which can then be compared to planned 2004 debt payments shown below.

FARM DEBT PAYMENTS PLANNED

Same 26 Central Valleys Region Dairy Farms, 2002 & 2003

Debt Payments	Average			My Farm		
	2003 Payments		Planned 2004	2003 Payments		Planned 2004
	Planned	Made		Planned	Made	
Long term	\$ 53,282	\$ 70,293	\$ 61,159	\$ _____	\$ _____	\$ _____
Intermediate term	81,637	121,245	70,667	_____	_____	_____
Short term	1,212	2,989	2,680	_____	_____	_____
Operating (net reduction)	8,765	5,038	2,346	_____	_____	_____
Accounts payable (net reduction)	411	1,582	0	_____	_____	_____
Total	\$ 145,307	\$ 201,147	\$ 136,852	\$ _____	\$ _____	\$ _____
Per cow	\$ 508	\$ 703		\$ _____	\$ _____	
Per cwt. 2003 milk	\$ 2.45	\$ 3.39		\$ _____	\$ _____	
Percent of total 2003 farm receipts	15%	21%		_____	_____	
Percent of 2003 milk receipts	18%	25%		_____	_____	

The cash flow coverage ratio and debt coverage ratio measure the ability of the farm business to meet its planned debt payment schedule. The ratios show the percentage of payments planned for 2003 (as of December 31, 2002) that could have been made with the amount available for debt service in 2003. Farmers who did not participate in DFBS in 2002 have their 2003 ratios based on planned debt payments for 2004. Cash flow coverage indicates the cash generated by the business for debt payments while debt coverage indicates the income earned by the business to make payments regardless of whether it is in the form of cash.

COVERAGE RATIOS

Same 26 Central Valleys Region Dairy Farms, 2002 & 2003

Item	Average	Item	Average
<u>Cash Flow Coverage Ratio</u>		<u>Debt Coverage Ratio</u>	
Cash farm receipts	\$899,422	Net farm income (w/o appreciation)	\$65,385
- Cash farm expenses	746,175	+ Depreciation	98,336
+ Interest paid (cash)	33,749	+ Interest paid (accrual)	33,763
- Net personal withdrawals from farm*	<u>57,438</u>	- Net personal withdrawals from farm*	<u>57,438</u>
(A) = Amount Available for Debt Service	\$129,558	(A') = Repayment Capacity	\$140,046
(B) = Debt Payments Planned for 2003 (as of December 31, 2002)	\$145,307	(B) = Debt Payments Planned for 2003 (as of December 31, 2002)	\$145,307
(A/B) = Cash Flow Coverage Ratio for 2003	0.89	(A'/B) = Debt Coverage Ratio for 2003	0.96

*Personal withdrawals and family expenditures less nonfarm income and nonfarm money borrowed. If family withdrawals are excluded, or inaccurately included, the ratios will be incorrect.

ANNUAL CASH FLOW WORKSHEET

Item	34 Central Valleys Region Dairy Farms		My Farm	Expected Change	2004 Projection
	Per Cow	Per Cwt.	Per Cow/ Per Cwt.		
Average number of cows	237		_____	_____	_____
Total cwt. of milk sold	48,595		_____	_____	_____
<u>Accrual Operating Receipts</u>					
Milk	\$ 2,763	\$ 13.48	\$ _____	_____	\$ _____
Dairy cattle	154	.75	_____	_____	_____
Dairy calves	46	.22	_____	_____	_____
Other livestock	1	.01	_____	_____	_____
Crops	115	.56	_____	_____	_____
Miscellaneous Receipts	194	.94	_____	_____	_____
Total	\$ 3,273	\$ 15.96	\$ _____	_____	\$ _____
<u>Accrual Operating Expenses</u>					
Hired labor	\$ 434	\$ 2.12	\$ _____	_____	\$ _____
Dairy grain & concentrate	739	3.61	_____	_____	_____
Dairy roughage	19	.09	_____	_____	_____
Nondairy feed	0	.00	_____	_____	_____
Professional nutritional services	0	.00	_____	_____	_____
Machinery hire, rent & lease	61	.30	_____	_____	_____
Machinery repair & vehicle expense	166	.81	_____	_____	_____
Fuel, oil & grease	76	.37	_____	_____	_____
Replacement livestock	27	.13	_____	_____	_____
Breeding	40	.20	_____	_____	_____
Veterinary & medicine	108	.53	_____	_____	_____
Milk marketing	171	.83	_____	_____	_____
Bedding	35	.17	_____	_____	_____
Milking supplies	81	.40	_____	_____	_____
Cattle lease	2	.01	_____	_____	_____
Custom boarding	84	.41	_____	_____	_____
bST	38	.19	_____	_____	_____
Livestock professional fees	4	.02	_____	_____	_____
Other livestock expense	20	.10	_____	_____	_____
Fertilizer & lime	52	.25	_____	_____	_____
Seeds & plants	57	.28	_____	_____	_____
Spray & other crop expense	26	.13	_____	_____	_____
Crop professional fees	5	.02	_____	_____	_____
Land, building & fence repair	22	.11	_____	_____	_____
Taxes	61	.30	_____	_____	_____
Real estate rent & lease	60	.29	_____	_____	_____
Insurance	32	.15	_____	_____	_____
Utilities	75	.36	_____	_____	_____
Miscellaneous	39	.19	_____	_____	_____
Total Less Interest Paid	\$ 2,533	\$ 12.35	\$ _____	_____	\$ _____
<u>Net Accrual Operating Income</u>		<u>Total</u>			
(without interest paid)	\$ 175,541		\$ _____	_____	\$ _____
- Change in livestock & crop invent.*	26,305		_____	_____	_____
- Change in accounts receivable	7,864		_____	_____	_____
- Change in feed & supply inventory**	-8,268		_____	_____	_____
+ Change in accounts payable***	4,033		_____	_____	_____
NET CASH FLOW	\$ 153,673		\$ _____	_____	\$ _____
- Net family withdrawals	\$ 49,728		_____	_____	_____
Available for Farm	\$ 103,945		\$ _____	_____	_____
- Farm debt payments	164,682		_____	_____	_____
Available for Farm Investment	\$ -60,737		\$ _____	_____	\$ _____
- Capital purchases	87,413		_____	_____	_____
Additional Capital Needed	\$ 148,150		\$ _____	_____	\$ _____

*Includes change in advance government receipts. **Includes change in prepaid expenses. ***Excludes change in interest account payable.

Cropping Analysis

The cropping program is an important part of the dairy farm business and often represents opportunities for improved productivity and profitability. A complete evaluation of the available land resources, how they are being used, the level of crop yields, and what it costs to produce crops is important in evaluating alternative cropping and feed purchasing alternatives.

LAND RESOURCES AND CROP PRODUCTION
34 Central Valleys Region Dairy Farms, 2003

Item	Average			My Farm		
<u>Land</u>	<u>Owned</u>	<u>Rented</u>	<u>Total</u>	<u>Owned</u>	<u>Rented</u>	<u>Total</u>
Tillable	266	295	561	_____	_____	_____
Nontillable	40	7	47	_____	_____	_____
Other nontillable	95	2	97	_____	_____	_____
Total	401	304	705	_____	_____	_____
<u>Crop Yields</u>	<u>Farms</u>	<u>Acres*</u>	<u>Prod/Acre</u>	<u>Acres</u>	<u>Prod/Acre</u>	
Hay crop	34	272	3.17 tn DM	_____	_____	tn DM
Corn silage	32	199	16.28 tn	_____	_____	tn
			5.60 tn DM	_____	_____	tn DM
Other forage	2	13	2.16 tn DM	_____	_____	tn DM
Total forage	34	461	4.15 tn DM	_____	_____	tn DM
Corn grain	14	137	134 bu	_____	_____	bu
Oats	3	28	59 bu	_____	_____	bu
Wheat	2	27	86 bu	_____	_____	bu
Other crops	3	35		_____		
Tillable pasture	7	122		_____		
Idle	10	42		_____		
Total Tillable Acres	34	561		_____		

*This column represents the average acreage for the farms producing that crop. Average acreages including those farms not producing were hay crop 272, corn silage 188, corn grain 57, oats 3, tillable pasture 25, and idle 12.

Average crop acres and yields compiled for the region are for the farms reporting each crop. Yields of forage crops have been converted to tons of dry matter using estimated dry matter values reported by the farmers. Grain production has been converted to bushels of dry grain equivalent based on dry matter content.

The following crop/dairy ratios indicate the relationship between forage production, forage production resources, and the dairy herd.

CROP/DAIRY RATIOS
34 Central Valleys Region Dairy Farms, 2003

Item	Average	My Farm
Total tillable acres per cow	2.37	_____
Total forage acres per cow	1.95	_____
Harvested forage dry matter, tons per cow	8.07	_____

Cropping Analysis (continued)

A number of cooperators have allocated crop expenses among the hay crop, corn, and other crops produced. Fertilizer and lime, seeds and plants, and spray and other crop expenses have been computed per acre and per production unit for hay and corn. Additional expense items such as fuels, labor, and machinery repairs are not included. Rotational grazing was used on five farms in the region.

CROP RELATED ACCRUAL EXPENSES
Central Valleys Region and New York Dairy Farms Reporting, 2003

Item	Total Per Tillable Acre	All Corn Per Acre	Corn Silage Per Ton DM	Corn Grain Per Dry Shell Bushel	Hay Crop	
					Per Acre	Per Ton DM
	Central Valleys Region	-----New York Farms Reporting-----				
Number of farms reporting	34	37			38	
Average number of acres	561	295			323	
Fertilizer & lime	\$ 21.51	\$ 35.79	\$ 6.47	\$ 0.42	\$ 16.55	\$ 5.60
Seeds & plants	23.68	39.88	7.05	0.38	11.90	3.77
Spray & other crop expense	<u>12.90</u>	<u>34.12</u>	<u>6.08</u>	<u>0.28</u>	<u>10.90</u>	<u>3.88</u>
TOTAL	\$ 58.09	\$ 109.79	\$ 19.60	\$ 1.08	\$ 39.35	\$ 13.25
My Farm						
Fertilizer & lime	\$ _____	\$ _____	\$ _____	\$ _____	\$ _____	\$ _____
Seeds & plants	_____	_____	_____	_____	_____	_____
Spray & other crop expense	_____	_____	_____	_____	_____	_____
TOTAL	\$ _____	\$ _____	\$ _____	\$ _____	\$ _____	\$ _____

Most machinery costs are associated with crop production and should be analyzed with the crop enterprise. Total machinery expenses include the major fixed costs (interest and depreciation), as well as the accrual operating costs. Although machinery costs have not been allocated to individual crops, they are shown below per total tillable acre.

ACCRUAL MACHINERY EXPENSES
34 Central Valleys Region Dairy Farms, 2003

Machinery Expense	Average		My Farm	
	Total Expenses	Per Tillable Acre	Total Expenses	Per Tillable Acre
Fuel, oil & grease	\$ 18,111	\$ 32.28	\$ _____	\$ _____
Mach. repair & vehicle exp.	39,302	70.06	_____	_____
Machine hire, rent & lease	14,491	25.83	_____	_____
Interest (5%)	15,411	27.47	_____	_____
Depreciation	<u>48,037</u>	<u>85.63</u>	_____	_____
Total	\$ 135,352	\$ 241.27	\$ _____	\$ _____

Dairy Analysis

Analysis of the dairy enterprise can reveal strengths and weaknesses of the dairy part of the farm business. Information on this page should be used in conjunction with DHI and other dairy production information. Changes in dairy herd size and market values that occur during the year are identified in the table below. The change in inventory value without appreciation is attributed to physical changes in herd size and quality. Change in inventory is included as an accrual farm receipt when calculating all of the profitability measures on pages 6 and 7.

DAIRY HERD INVENTORY
34 Central Valleys Region Dairy Farms, 2003

Item	Dairy Cows		Bred		Heifer Open		Calves	
	No.	Value	No.	Value	No.	Value	No.	Value
Beg. year (owned)	231	\$ 273,440	69	\$ 81,190	63	\$ 42,893	43	\$ 16,755
+ Change w/o apprec.		13,669		-7,357		4,572		3,203
+ Appreciation		<u>11,769</u>		<u>3,397</u>		<u>2,344</u>		<u>1,217</u>
End year (owned)	244	\$ 298,878	64	\$ 77,230	69	\$ 49,809	50	\$ 21,175
End including leased	245							
Average number	237		179	(all age groups)				

My Farm:

Beg. year (owned)	_____	\$ _____	_____	\$ _____	_____	\$ _____	_____	\$ _____
+ Change w/o apprec.		_____		_____		_____		_____
+ Appreciation		_____		_____		_____		_____
End year (owned)	_____	\$ _____	_____	\$ _____	_____	\$ _____	_____	\$ _____
End including leased	_____							
Average number	_____		_____	(all age groups)				

Total milk sold and milk sold per cow are extremely valuable measures of size and productivity, respectively, on the dairy farm. These measures of milk output are based on pounds of milk marketed during the year.

MILK PRODUCTION
34 Central Valleys Region Dairy Farms, 2003

Item	Average	My Farm
Total milk sold, lbs.	4,859,546	_____
Milk sold per cow, lbs.	20,509	_____
Average milk plant test, percent butterfat	3.65%	_____

Monitoring and evaluating culling practices and experiences on an annual basis are important herd management tools. Culling rate can have an affect on both milk per cow and profitability.

ANIMALS LEAVING THE HERD
34 Central Valleys Region Dairy Farms, 2003

Item	Average		My Farm	
	Number	Percent*	Number	Percent*
Cows sold for beef	62	26.2	_____	_____
Cows sold for dairy	1	0.0	_____	_____
Cows died	14	5.9	_____	_____
Culling rate**		32.1		_____

*Percent of average number of cows in the herd. **Cows sold for beef plus cows died.

The cost of producing milk has been compiled using the whole farm residual cost method and is featured in the following table. Accrual receipts from milk sales can be compared with the accrual costs of producing milk per cow and per hundred-weight of milk. Using the whole farm method, operating costs of producing milk are estimated by deducting nonmilk accrual receipts from total accrual operating expenses including expansion livestock purchased. Purchased inputs cost of producing milk are the operating costs plus depreciation. Total costs of producing milk include the operating costs of producing milk plus depreciation on machinery and buildings, the value of unpaid family labor, the value of operators' labor and management, and the interest charge for using equity capital.

**ACCRUAL RECEIPTS FROM DAIRY, COSTS OF PRODUCING MILK,
AND PROFITABILITY**

34 Central Valleys Region Dairy Farms, 2003

Item	Average			My Farm		
	Total	Per Cow	Per Cwt.	Total	Per Cow	Per Cwt.
<u>Accrual Cost of Producing Milk</u>						
Operating costs	\$ 520,443	\$ 2,196	\$ 10.71	\$ _____	\$ _____	\$ _____
Purchased inputs costs	\$ 600,476	\$ 2,534	\$ 12.36	\$ _____	\$ _____	\$ _____
Total Costs	\$ 711,763	\$ 3,003	\$ 14.65	\$ _____	\$ _____	\$ _____
<u>Accrual Receipts</u>						
<u>From Milk</u>	\$ 654,920	\$ 2,763	\$ 13.48	\$ _____	\$ _____	\$ _____
Net Milk Receipts	\$ 614,480	\$ 2,593	\$ 12.64	\$ _____	\$ _____	\$ _____
Net Farm Income without Apprec.	\$ 54,443	\$ 230	\$ 1.12	\$ _____	\$ _____	\$ _____
Net Farm Income with Appreciation	\$ 117,191	\$ 494	\$ 2.41	\$ _____	\$ _____	\$ _____

The accrual operating expenses most commonly associated with the dairy enterprise are listed in the table below. Feed and crop expenses include total purchased dairy feed plus fertilizer, seeds, spray and other crop expenses.

DAIRY RELATED ACCRUAL EXPENSES

34 Central Valleys Region Dairy Farms, 2003

Item	Average		My Farm	
	Per Cow	Per Cwt.	Per Cow	Per Cwt.
Purchased dairy grain & concentrate	\$ 739	\$ 3.61	\$ _____	\$ _____
Purchased dairy roughage	19	.09	_____	_____
Total Purchased Dairy Feed	\$ 758	\$ 3.70	\$ _____	\$ _____
Purchased grain & conc. as % of milk receipts		27%		%
Purchased feed & crop exp.	\$ 898	\$ 4.38	\$ _____	\$ _____
Purchased feed & crop exp. as % of milk receipts		32%		%
Breeding	\$ 40	\$.20	\$ _____	\$ _____
Veterinary & medicine	108	.53	_____	_____
Milk marketing	171	.83	_____	_____
Bedding	35	.17	_____	_____
Milking supplies	81	.40	_____	_____
Cattle lease	2	.01	_____	_____
Custom boarding	84	.41	_____	_____
bST	38	.19	_____	_____
Livestock professional fees	4	.02	_____	_____
Other livestock expense	20	.10	_____	_____

Capital and Labor Efficiency Analysis

Capital efficiency factors measure how effectively the capital is being used in the farm business. Measures of labor efficiency are key indicators of management's success in generating products per unit of labor input. When evaluating a business, the relationship between capital efficiency and labor efficiency should be explored. For example, if capital efficiency shows high capital investment per worker or per cow, labor efficiency should be high reflecting use of capital to make labor more effective. However, if capital investment is high per worker or per cow, and labor efficiency is low, a problem may exist on that farm.

CAPITAL EFFICIENCY
34 Central Valleys Region Dairy Farms, 2003

Item	Per Worker	Per Cow	Per Tillable Acre	Per Tillable Acre Owned
Farm capital	\$325,824	\$7,149	\$3,020	\$6,369
Real estate	136,778	3,001		2,674
Machinery & equipment	59,274	1,301	549	

Ratios

Asset turnover	Operating Expense	Interest Expense	Depreciation Expense
.49	.79	.04	.10

My Farm

Farm capital	\$ _____	\$ _____	\$ _____	\$ _____
Real estate	_____	_____	_____	_____
Machinery & equipment	_____	_____	_____	_____

Ratios

Asset turnover	Operating Expense	Interest Expense	Depreciation Expense
_____	_____	_____	_____

LABOR FORCE INVENTORY
34 Central Valleys Region Dairy Farms, 2003

Labor Force	Months	Age	Years of Educ.	Value of Labor & Mgmt.
Operator number 1	13.1	50	14	\$32,588
Operator number 2	6.0	46	14	16,294
Operator number 3	2.1	45	13	7,000
Operator number 4	0.8	39	13	1,735
Family paid	1.8			
Family unpaid	2.0			
Hired	<u>36.7</u>			
Total	62.5	/ 12 = 5.20 Worker Equivalent 1.83 Operator/Manager Equivalent		

<u>My Farm:</u> Total	_____	/ 12 = _____ Worker Equivalent
Operator's	_____	/ 12 = _____ Operator/Manager Equivalent

Small conventional stall operations of 60 or fewer cows should strive for labor efficiency of 600,000 or more pounds of milk sold per worker. Large conventional stall operations should strive for 850,000 or more pounds of milk sold per worker. Small free stall operations of less than 300 cows should strive for 1,000,000 pounds of milk sold per worker and large free stall operations with more than 300 cows should strive for over 1,200,000 pounds of milk sold per worker.

Labor costs and machinery costs should also be evaluated both individually and jointly. The more machinery or technology at a worker's disposal, the less time, and therefore cost, that should be required to get work accomplished. Striving for labor and machinery costs per cow of less than \$1,000 on small conventional stall barns, less than \$900 on large conventional stall barns, less than \$850 on small free stall barns and below \$750 on large free stall barns should often be a goal.

LABOR EFFICIENCY
34 Central Valleys Region Dairy Farms, 2003

Labor Efficiency	Average		My Farm	
	Total	Per Worker	Total	Per Worker
Cows, average number	237	46	_____	_____
Milk sold, pounds	4,859,546	934,528	_____	_____
Tillable acres	561	108	_____	_____

LABOR AND MACHINERY COSTS
34 Central Valleys Region Dairy Farms, 2003

Labor Costs	Average			My Farm		
	Total	Per Cow	Per Cwt.	Total	Per Cow	Per Cwt.
Value of operator(s) labor (\$2,200/month)	\$ 48,400	\$ 204	\$ 1.00	\$ _____	\$ _____	\$ _____
Family unpaid (\$2,200/month)	4,400	19	.09	_____	_____	_____
Hired	<u>102,917</u>	<u>434</u>	<u>2.12</u>	_____	_____	_____
Total Labor	\$ 155,717	\$ 657	\$ 3.21	\$ _____	\$ _____	\$ _____
Machinery Cost	\$ <u>135,352</u>	\$ <u>571</u>	\$ <u>2.79</u>	\$ _____	\$ _____	\$ _____
Total Labor & Mach.	\$ 291,069	\$ 1,228	\$ 6.00	\$ _____	\$ _____	\$ _____
Hired labor expense per hired worker equivalent			\$32,078	\$ _____		
Hired labor expense as % of milk sales			15.7%	_____%		

COMPARATIVE ANALYSIS OF THE FARM BUSINESS

Progress of the Farm Business

Comparing your business with average data from regional DFBS cooperators that participated in both of the last two years can be helpful to establishing your goals for these parameters. It is equally important for you to determine the progress your business has made over the past two or three years, to compare this progress to your goals, and to set goals for the future.

PROGRESS OF THE FARM BUSINESS Same 26 Central Valleys Region Dairy Farms, 2002 & 2003

Selected Factors	Average of 26 Farms*		My Farm		Goal
	2002	2003	2002	2003	
<u>Size of Business</u>					
Average number of cows	270	286	_____	_____	_____
Average number of heifers	201	216	_____	_____	_____
Milk sold, pounds	5,682,253	5,941,417	_____	_____	_____
Worker equivalent	6.04	6.09	_____	_____	_____
Total tillable acres	629	637	_____	_____	_____
<u>Rates of Production</u>					
Milk sold per cow, pounds	21,054	20,808	_____	_____	_____
Hay DM per acre, tons	3.1	3.2	_____	_____	_____
Corn silage per acre, tons	16.4	15.3	_____	_____	_____
<u>Labor Efficiency</u>					
Cows per worker	45	47	_____	_____	_____
Milk sold/worker, pounds	940,770	975,602	_____	_____	_____
<u>Cost Control</u>					
Grain & conc. purchased as % of milk sales	28%	26%	_____ %	_____ %	_____ %
Dairy feed & crop expense per cwt. milk	\$ 4.62	\$ 4.32	\$ _____	\$ _____	\$ _____
Labor & mach. costs/cow	\$ 1,172	\$ 1,210	\$ _____	\$ _____	\$ _____
Operating cost of producing cwt. of milk	\$ 10.56	\$ 10.75	\$ _____	\$ _____	\$ _____
<u>Capital Efficiency**</u>					
Farm capital per cow	\$ 7,037	\$ 6,959	\$ _____	\$ _____	\$ _____
Mach. & equipment per cow	\$ 1,288	\$ 1,264	\$ _____	\$ _____	\$ _____
Asset turnover ratio	.50	.51	_____	_____	_____
<u>Profitability</u>					
Net farm income w/o apprec.	\$ 52,207	\$ 65,385	\$ _____	\$ _____	\$ _____
Net farm income w/apprec.	\$ 93,635	\$ 141,144	\$ _____	\$ _____	\$ _____
Labor & mgmt. income per operator/manager	\$ -3,339	\$ 1,780	\$ _____	\$ _____	\$ _____
Rate of return on equity capital w/appreciation	1.9%	6.3%	_____ %	_____ %	_____ %
Rate of return on all capital w/appreciation	3.1%	5.3%	_____ %	_____ %	_____ %
<u>Financial Summary</u>					
Farm net worth, end year	\$1,103,598	\$ 1,193,111	\$ _____	\$ _____	\$ _____
Debt to asset ratio	.44	.41	_____	_____	_____
Farm debt per cow	\$ 3,056	\$ 2,840	\$ _____	\$ _____	\$ _____

*Farms participating both years.

**Average for the year.

RECEIPTS AND EXPENSES PER COW AND PER CWT.
Same 26 Central Valleys Region Dairy Farms, 2002 & 2003

Item	2002		2003	
	Per Cow	Per Cwt.	Per Cow	Per Cwt.
Average Number of Cows	270		286	
Cwt. Of Milk Sold		56,823		59,414
<u>ACCRUAL OPERATING RECEIPTS</u>				
Milk	\$2,797	\$13.29	\$2,805	\$13.50
Dairy cattle	240	1.14	145	0.70
Dairy calves	29	0.14	46	0.22
Other livestock	1	0.01	0	0.00
Crops	71	0.34	106	0.51
Miscellaneous receipts	<u>249</u>	<u>1.18</u>	<u>178</u>	<u>0.85</u>
Total Receipts	\$3,388	\$16.10	\$3,280	\$15.78
<u>ACCRUAL OPERATING EXPENSES</u>				
Hired labor	\$427	\$2.03	\$446	\$2.15
Dairy grain & concentrate	785	3.73	738	3.55
Dairy roughage	29	0.14	18	0.08
Nondairy feed	0	0.00	0	0.00
Professional nutritional services	NA*	NA*	0	0.00
Machine hire/rent/lease	69	0.33	60	0.29
Mach. repair & vehicle exp.	139	0.66	165	0.79
Fuel, oil & grease	62	0.29	76	0.36
Replacement livestock	90	0.43	22	0.11
Breeding	40	0.19	40	0.19
Veterinary & medicine	104	0.49	111	0.54
Milk marketing	157	0.74	169	0.81
Bedding	31	0.15	35	0.17
Milking supplies	97	0.46	83	0.40
Cattle lease	0	0.00	2	0.01
Custom boarding	89	0.42	91	0.44
bST expense	50	0.24	40	0.19
Livestock professional fees	NA*	NA*	3	0.02
Other livestock expense	18	0.09	17	0.08
Fertilizer & lime	56	0.27	51	0.25
Seeds & plants	67	0.32	60	0.29
Spray/other crop expense	35	0.17	27	0.13
Crop professional fees	NA*	NA*	5	0.03
Land, building, fence repair	38	0.18	22	0.11
Taxes	58	0.28	60	0.29
Real estate rent/lease	55	0.26	59	0.28
Insurance	33	0.16	30	0.14
Utilities	73	0.35	72	0.35
Interest paid	139	0.66	118	0.57
Other professional fees	NA*	NA*	24	0.11
Miscellaneous	<u>40</u>	<u>0.19</u>	<u>15</u>	<u>0.07</u>
Total Operating Expenses	\$2,783	\$13.22	\$2,659	\$12.80
Expansion Livestock	31	0.15	49	0.23
Extraordinary Expense	NA*	NA*	0	0.00
Machinery Depreciation	200	0.95	200	0.96
Real Estate Depreciation	<u>181</u>	<u>0.86</u>	<u>144</u>	<u>0.69</u>
Total Expenses	\$3,195	\$15.18	\$3,052	\$14.68
Net Farm Income Without Appreciation	\$193	\$0.92	\$229	\$1.10

*NA = not available in 2002 data. Expense was included in other categories.

Regional Farm Business Chart

The Farm Business Chart is a tool which can be used in analyzing your business. Compare your business by drawing a line through or near the figure in each column which represents your current level of performance. The five figures in each column represent the average of each 20 percent or quintile of farms included in the regional summary. Use this information to identify business areas where more challenging goals are needed.

FARM BUSINESS CHART FOR FARM MANAGEMENT COOPERATORS

34 Central Valleys Region Dairy Farms, 2003

Size of Business			Rate of Production			Labor Efficiency	
Worker Equivalent	No. of Cows	Pounds Milk Sold	Pounds Milk Sold Per Cow	Tons Hay Crop DM/Acre	Tons Corn Silage Per Acre	Cows Per Worker	Pounds Milk Sold Per Worker
(14)*	(12)	(12)	(12)	(11)	(11)	(14)	(14)
13.54	694	15,136,790	23,723	4.4	22	60	1,122,356
4.83	222	4,399,481	20,735	3.5	18	42	865,532
3.35	114	2,036,979	19,118	2.9	16	37	736,809
2.29	79	1,358,338	16,296	2.5	15	33	571,461
1.47	48	783,915	12,939	1.7	10	26	402,010

Cost Control						
Grain Bought Per Cow	% Grain is of Milk Receipts	Machinery Costs Per Cow	Labor & Machinery Costs per Cow	Feed & Crop Expenses Per Cow	Feed & Crop Expenses Per Cwt. Milk	
(12)	(12)	(14)	(14)	(12)	(12)	
\$364	16%	\$306	\$813	\$511	\$3.12	
568	23	486	1,112	708	3.95	
683	29	559	1,323	831	4.52	
841	32	701	1,517	1,027	5.11	
1,062	41	1,343	2,173	1,216	6.42	

Value and Cost of Production			Profitability			
Milk Receipts Per Cow	Oper. Cost Milk Per Cwt.	Total Cost Production Per Cwt.	Net Farm Income w/Apprec.	Net Farm Inc. w/o Apprec.	Labor & Mgt. Inc. Per Oper.	Change in Net Worth w/Apprec.
(12)	(12)	(12)	(4)	(4)	(4)	(8)
\$3,216	\$5.16	\$12.34	\$347,429	\$170,796	\$42,122	\$265,064
2,764	9.56	13.57	132,280	73,366	18,162	111,691
2,579	10.24	14.88	71,784	44,740	822	29,253
2,168	11.94	16.33	32,786	10,443	-13,130	-2,354
1,759	13.23	20.42	-17,575	-40,725	-75,175	-52,988

*Page number of the participant's DFBS where the factor is located.

Supplementary Information

Each year DFBS cooperators volunteer to complete supplementary data collection forms looking at selected management aspects of the business or specific research areas being studied. This is in addition to the normal DFBS data collection form. Two areas that were examined this year were the source of dairy replacements and the breakdown of the milk income and marketing expenses. Following is a summary of this information.

SOURCE OF DAIRY REPLACEMENTS 48 New York Dairy Farms, 2003

<u>Animals Entering Herd</u>	Average
Number calving in 2003 for first time	185
Animals purchased, % ¹	6%
Animals raised by farm, % ²	94%
 <u>Current Heifer Inventory</u>	
Raised on dairy, %	79%
Raised by a custom grower, %	21%

¹ Animals purchased are animals purchased from a different farm and were not the farm's genetics.

² Animals raised by farm are animals that were born on the farm and entered the herd, which includes animals raised by the farm or custom grower.

On the average farm, 185 animals calved for the first time in 2003. The breakdown on these animals for source was 6 percent purchased and 94 percent raised by the farm. Of the current heifer inventory, 79 percent were raised on the dairy and 21 percent were being raised by a custom grower. There is increased interest in evaluating the dairy replacement enterprise.

Milk Income and Marketing Expense Breakdown

Starting January 1st, 2000, the northeast switched to multiple components pricing, which changed the format of the milk check and how farmers received payment for their milk. To examine the breakdown of the gross milk income and the marketing expenses, 135 New York farms filled out a detailed form for all the different sources of income for milk sales and the milk marketing expenses on an accrual basis. This information is reported in the following two tables. The tables are divided into six different areas, each representing a different area of income or expenses.

The first section looks at the value of the milk components on a per cwt. basis. The second area looks at the Producer Price Differential. The third area looks at the premiums a farm receives. Any premiums not specifically noted as quality or volume related are included in market premiums. The fourth area looks at the expenses associated with marketing milk. A new line item in this section is the expenses associated with utilizing forward contracting or hedging programs to market milk, such as commission or broker fees. The fifth area is income from the compact program or from forward contracting or hedging programs. The sixth area is the patronage dividends or refunds from the milk cooperatives. Equity purchased in the milk cooperative utilizing a monthly deduction from the milk check or a percent of the patronage dividend is treated as a capital purchase and is not a milk marketing expense. The cumulative total for these six areas is the net price received on farms. Your net farm price can be found on page 12 of your farm's DFBS report.

The table on page 25 reports the averages for these different areas. The table on page 26 contains the range for each of the individual lines of the report. This table is in farm business chart format with each item sorted independently and ranked by fifths. Numbers for the different areas will not add to the totals for that quintile or to the net price received because the highest farms for each item were averaged, not the same farms throughout the six areas. This table shows the range of income and expenses received by farms for all the different areas.

For your individual farm, compare your accrual numbers following this same format to look at how you compare to other farms in your region and to identify possible areas to generate additional revenue.

AVERAGE MILK INCOME AND MARKETING REPORT

135 New York Dairy Farms, 2003

	Pounds	Percent	Price/Pound	Total	\$/Cwt of Milk
BASE FARM PRICE					
Butterfat	280,714.60	3.61%	\$1.222	\$343,002.00	\$4.42
Protein	231,096.70	2.97%	\$2.361	\$545,723.00	\$7.03
Solids	435,160.80	5.60%	\$0.014	\$5,923.22	\$0.08
Total Component Contribution					\$11.53
PPD	7,767,974.00			\$60,861.57	\$0.78
Base Farm Price					\$12.31
Premiums					
Quality				\$13,805.93	\$0.18
Volume				\$22,873.26	\$0.29
Market Premiums				\$25,045.15	\$0.32
Total Premiums					\$0.79
BASE FARM PRICE + PREMIUM					\$13.10
Deductions					
Promotion				\$12,543.91	\$0.16
Hauling + Stop Charges.				\$36,730.88	\$0.47
Market Fees & Coop Dues				\$3,729.09	\$0.05
Total Deductions					\$0.68
BASE FARM PRICE + PREMIUMS - DEDUCTIONS					\$12.42
Marketing Programs					
Futures Contracts, Forward Contracting, Etc.				\$2,302.28	\$0.03
Total Marketing Income					\$0.03
Patronage Dividends				\$9,830.47	\$0.13
NET PRICE RECEIVED ON FARM, ALL SOURCES					\$12.58
PPD - Hauling, per cwt.					\$0.31
PPD - Hauling + Market Premiums, per cwt.					\$0.63

MILK PRICE INFORMATION BY QUINTILE

(Each Category Sorted Independently)
135 New York Dairy Farms, 2003

	Lowest Quintile	←	→	Highest Quintile	
Butterfat, %	3.44	3.59	3.67	3.75	3.99
Protein, %	2.88	2.95	2.99	3.03	3.18
Other Solids, %	5.23	5.65	5.69	5.73	5.92
Butterfat, \$ per Cwt.	3.96	4.31	4.43	4.55	5.11
Protein, \$ per Cwt.	6.27	6.94	7.04	7.17	7.65
Other solids, \$ per Cwt.	0.03	0.07	0.07	0.08	0.15
Total Component Value per Cwt.	\$10.71	\$11.36	\$11.55	\$11.75	\$12.46
PPD, \$ per Cwt.	0.49	0.62	0.77	1.02	1.45
Base Farm Price per Cwt.	\$11.37	\$12.13	\$12.42	\$12.79	\$13.49
Quality, \$ per Cwt.	0.01	0.07	0.17	0.23	0.34
Volume, \$ per Cwt.	0.00	0.00	0.11	0.24	0.49
Market premium, \$ per Cwt.	0.00	0.10	0.16	0.31	1.11
Total Premium, \$ per Cwt.	0.16	0.38	0.52	0.74	1.52
Base Farm Price + Premiums per Cwt.	\$12.30	\$12.71	\$13.01	\$13.33	\$14.17
Promotion, \$ per Cwt.	0.13	0.15	0.15	0.16	0.20
Hauling, \$ per Cwt.	0.27	0.41	0.50	0.66	1.06
Market fees & coop dues per Cwt.	0.01	0.03	0.06	0.08	0.12
Total Marketing Expenses per Cwt.	\$0.47	\$0.61	\$0.72	\$0.89	\$1.29
Base + Premiums – Deductions per Cwt.	\$11.56	\$11.99	\$12.25	\$12.53	\$13.21
Futures contract, forward contracting, \$ per Cwt.	-0.01	0.00	0.00	0.00	0.07
Total Marketing Income, \$ per Cwt.	\$-0.01	\$0.00	\$0.00	\$0.00	\$0.07
Patronage Dividends, \$ per Cwt.	\$-0.04	\$0.00	\$0.01	\$0.16	\$0.66
Net Price Received From All Sources, \$ per Cwt.	\$11.74	\$12.22	\$12.41	\$12.69	\$13.34
PPD - Hauling, \$ per cwt.	-0.01	0.18	0.27	0.39	0.63
PPD - Hauling + Market Premiums, \$ per cwt.	0.15	0.32	0.48	0.67	1.52

New York State Farm Business Charts

The Farm Business Chart is a tool which can be used in analyzing a business by drawing a line through the figure in each column which represents the current level of management performance. The figure at the top of each column is the average of the top 10 percent of the 219 farms for that factor. The other figures in each column are the average for the second 10 percent, third 10 percent, etc. Each column of the chart is independent of the others. The farms which are in the top 10 percent for one factor would not necessarily be the same farms which make up the top 10 percent for any other factor.

The cost control factors are ranked from low to high, but the lowest cost is not necessarily the most profitable. In some cases, the "best" management position is somewhere near the middle or average. Many things affect the level of costs, and must be taken into account when analyzing the factors.

FARM BUSINESS CHART FOR FARM MANAGEMENT COOPERATORS

219 New York Dairy Farms, 2002

Size of Business			Rates of Production			Labor Efficiency	
Worker Equivalent	No. of Cows	Pounds Milk Sold	Pounds Milk Sold Per Cow	Tons Hay Crop DM/Acre	Tons Corn Silage Per Acre	Cows Per Worker	Pounds Milk Sold Per Worker
(14)*	(12)	(12)	(12)	(11)	(11)	(14)	(14)
22.1	1,096	26,070,804	25,939	5.5	23	63	1,348,521
13.1	577	13,521,669	24,156	4.0	18	49	1,116,565
9.9	397	8,759,377	23,267	3.4	17	45	974,408
7.5	293	6,374,929	22,426	3.1	16	41	884,130
5.7	195	3,992,743	21,679	2.9	15	38	785,112

4.3	142	2,942,120	20,935	2.7	14	34	692,994
3.5	110	2,070,554	19,685	2.4	13	31	605,540
2.9	83	1,514,427	18,018	2.1	12	28	516,862
2.3	66	1,140,734	16,056	1.8	10	24	424,069
1.6	42	674,145	12,330	1.2	7	18	295,997

Cost Control						
Grain Bought Per Cow	% Grain is of Milk Receipts	Machinery Costs Per Cow	Labor & Machinery Costs Per Cow	Feed & Crop Expenses Per Cow	Feed & Crop Expenses Per Cwt. Milk	
(12)	(12)	(14)	(14)	(12)	(12)	
\$422	19%	\$279	\$866	\$571	\$3.41	
576	24	390	1,026	759	3.97	
646	26	442	1,139	843	4.26	
721	28	487	1,215	914	4.53	
767	30	523	1,265	972	4.73	

829	31	563	1,332	1,027	4.99	
894	33	610	1,423	1,099	5.20	
939	34	661	1,548	1,165	5.43	
1,012	36	727	1,686	1,242	5.82	
1,140	42	945	2,124	1,372	6.97	

*Page number of the participant's DFBS where the factor is located.

**FARM BUSINESS CHART FOR
FARM MANAGEMENT COOPERATORS**
219 New York Dairy Farms, 2002

Milk Receipts Per Cow	Milk Receipts Per Cwt.	Oper. Cost Milk Per Cow	Oper. Cost Milk Per Cwt.	Total Cost Production Per Cow	Total Cost Production Per Cwt.
(12)	(12)	(12)	(12)	(12)	(12)
\$3,383	\$15.11	\$1,117	\$7.37	\$2,074	\$12.10
3,103	13.58	1,590	8.65	2,558	12.95
2,995	13.26	1,842	9.35	2,772	13.58
2,900	13.04	1,990	9.97	2,907	14.06
2,797	12.92	2,119	10.48	3,022	14.62

2,696	12.80	2,301	10.86	3,156	15.15
2,565	12.65	2,444	11.36	3,301	15.79
2,366	12.48	2,580	11.91	3,431	16.73
2,099	12.31	2,813	12.55	3,677	17.85
1,594	11.89	3,116	14.93	4,013	21.72

Profitability						
Net Farm Income Without Appreciation			Net Farm Income With Appreciation		Labor & Management Income	
Total	Per Cow	Operations Ratio	Total	Per Cow	Per Farm	Per Operator
(4)	(12)	(4)	(4)	(12)	(4)	(4)
\$311,300	\$800	0.23	\$490,988	\$1,018	\$169,943	\$102,486
111,164	544	0.17	190,585	695	46,398	31,785
74,548	422	0.13	120,125	540	19,765	12,137
48,934	321	0.10	76,473	429	6,293	4,230
31,650	250	0.08	51,347	340	-6,706	-4,145

18,485	152	0.05	31,621	213	-17,073	-12,209
6,953	57	0.02	17,028	139	-31,884	-22,091
-3,847	-18	-0.01	5,335	51	-59,274	-40,962
-31,661	-193	-0.06	-21,619	-152	-105,558	-70,856
-173,275	-522	-0.20	-118,492	-453	-272,400	-204,262

Farm Business Charts for farms with freestall barns and 150 cows or less, 151-300 cows, and more than 300 cows; and farms with conventional barns with 60 cows or less and more than 60 cows are shown on pages 32-36.

Financial Analysis Chart

The farm financial analysis chart on page 29 is designed just like the Farm Business Chart and may be used to assess the financial health of the farm business. Most of the financial measures used in the chart are defined on pages 6, 9, 13 and 19 of this publication. References to DFBS output page numbers for participating dairy farmers are provided in the table headings.

FINANCIAL ANALYSIS CHART
219 New York Dairy Farms, 2002

Liquidity (repayment)							
Planned Debt Payments Per Cow	Available for Debt Service Per Cow	Cash Flow Coverage Ratio	Debt Coverage Ratio	Debt Payments as Percent of Milk Sales	Debt Per Cow	Working Capital as % of Total Expenses	Current Ratio
(10)*	(16)	(10)	(10)	(10)	(7)	(7)	(7)
\$136	\$862	6.53	3.22	5%	\$272	41%	12.51
266	665	1.71	1.65	9	1,046	26	3.42
345	575	1.29	1.23	13	1,626	20	2.35
393	502	1.05	1.02	15	2,072	15	1.88
447	446	0.92	0.83	17	2,447	11	1.57
513	378	0.80	0.73	19	2,789	7	1.30
570	318	0.70	0.59	21	3,164	3	1.08
649	245	0.59	0.33	24	3,583	-2	0.85
749	138	0.38	0.02	29	3,990	-9	0.66
901	-220	-0.64	-1.36	36	5,658	-19	0.34
Solvency				Operational Ratios			
Leverage Ratio**	Percent Equity	Debt/Asset Ratio		Operating Expense Ratio	Interest Expense Ratio	Depreciation Expense Ratio	
		Current & Intermediate	Long Term				
(7)	(7)	(7)	(7)	(14)	(14)	(14)	
0.03	97%	0.04	0.00	0.65	0.00	0.02	
0.15	87	0.15	0.00	0.71	0.01	0.04	
0.28	78	0.24	0.03	0.75	0.02	0.05	
0.38	73	0.32	0.16	0.78	0.03	0.07	
0.52	66	0.37	0.25	0.81	0.03	0.08	
0.69	60	0.42	0.33	0.83	0.04	0.09	
0.89	53	0.49	0.41	0.85	0.05	0.10	
1.17	46	0.57	0.54	0.88	0.06	0.11	
1.53	40	0.65	0.70	0.92	0.07	0.13	
9.33	25	0.90	1.02	1.05	0.10	0.18	
Efficiency (Capital)				Profitability			
Asset Turnover (ratio)	Real Estate Investment Per Cow	Machinery Investment Per Cow	Total Farm Assets Per Cow	Change in Net Worth With Appreciation	Percent Rate of Return with Appreciation on:		
(14)	(14)	(14)	(14)	(8)	Equity	Investment***	
.73	\$1,144	\$618	\$4,832	\$264,759	64%	11%	
.62	1,935	888	5,717	96,454	8	7	
.57	2,234	1,038	6,164	46,852	5	5	
.52	2,486	1,194	6,539	21,703	2	3	
.48	2,725	1,320	6,871	5,483	0	2	
.45	3,008	1,458	7,454	-5,080	-2	1	
.41	3,359	1,651	8,058	-20,508	-4	-1	
.35	3,850	1,899	8,653	-43,685	-7	-3	
.31	4,483	2,220	9,564	-80,709	-13	-5	
.23	7,197	3,171	12,724	-255,995	-37	-10	

*Page number of the participant's DFBS where the factor is located.

**Dollars of debt per dollar of equity, computed by dividing total liabilities by total equity.

***Return on all farm capital (no deduction for interest paid) divided by total farm assets

Comparison by Type of Barn and Herd Size

When analyzing a dairy farm business by comparing it to a group of farms, it is important that the group of farms have used as many of the same physical characteristics as possible as the farm being analyzed. To assist in this endeavor, dairy farms in the summary have been divided into those with freestall and those with conventional housing. Conventional housing includes stanchion and tiestall barns. Within each group, is a further classification by size of the dairy herd.

The table on page 31 includes the average values for the resulting five groups of dairy farms. The average size of farms in the five groups ranges from 45 cows on the small conventional farms to 646 cows on the largest freestall farms.

The largest freestall farms averaged the highest milk output per cow and per worker, the lowest total cost of production and investment per cow, and the greatest returns to labor, management and capital. The small freestall farms showed average profits somewhat higher than the large conventional farm businesses.

Farm business charts have been computed for each of the five housing and herd size categories and are on pages 32-36. By comparing the farm's performance on the most appropriate business chart, a farm manager will be better able to evaluate his or her business performance.

Herd Size Comparisons

A detailed comparison of profitability, financial situation and business analysis factors across herd sizes is contained on pages 48-54 of the 2002 State Summary*. As herd size increases, the net farm income profitability generally increases (page 48)*. Net farm income without appreciation averaged \$14,699 per farm for the less than 50 cow farms and \$92,702 per farm for those with more than 600 cows. However, net farm income per cow decreases as herd size increases. No relationship to herd size exists with the other more comprehensive measures of profitability.

Assets, liabilities and financial measures are presented on pages 55-58*. Not all herd size categories saw an increase in net worth during 2002. The largest herd size category experienced an increase in net worth of over \$36,000. However, percent equity went down as assets increased. The largest herds had 51 percent equity; while the smaller herds averaged 77 percent.

Crop yields showed little relationship to herd size, but fertilizer and lime expenses, and machinery cost per tillable acre generally increased as herd size increased (pages 59-60)*. The farms with 600 and more cows per farm averaged 39 percent more milk sold per cow than the smallest farms. All of the groups with 150 or more cows averaged above 20,000 pounds of milk sold per cow while the farms smaller than 150 cows averaged 17,956 pounds of milk sold per cow. Farm capital per worker increased, and farm capital per cow decreased as herd size increased. Milk sold per worker increased dramatically as herd size increased, ranging from 350,469 pounds at the lowest herd size category up to 1,183,404 pounds at the largest size category.

*Wayne A. Knoblauch, Linda D. Putnam, and Jason Karszes, Dairy Farm Management Business Summary, New York, 2002, Department of Applied Economics and Management, Cornell University, R.B. 2003-03, November 2003.

SELECTED BUSINESS FACTORS BY TYPE OF BARN AND HERD SIZE

199 New York Dairy Farms, 2002

Item	Farms with:	Conventional		Freestall		
		<= 60 Cows	>60 Cows	<=150 Cows	151-300 Cows	≥300 Cows
Number of farms		26	36	33	33	71
<u>Cropping Program Analysis</u>						
Total Tillable acres		167	313	335	591	1,229
Tillable acres rented*		65	129	174	340	639
Hay crop acres *		113	196	180	294	553
Corn silage acres *		22	58	86	191	508
Hay crop, tons DM/acre		2.0	2.2	2.3	2.8	3.6
Corn silage, tons/acre		12.1	13.5	12.5	13.2	16.4
Oats, bushels/acre		30	46	0	62	61
Forage DM per cow, tons		7.1	7.8	7.4	7.9	7.4
Tillable acres/cow		3.7	3.4	3.1	2.8	1.9
Fertilizer & lime expense/tillable acre		\$13.11	\$23.47	\$29.61	\$31.98	\$28.31
Total machinery costs		\$25,126	\$57,250	\$61,740	\$133,161	\$316,549
Machinery cost/tillable acre		\$150	\$183	\$184	\$225	\$258
<u>Dairy Analysis</u>						
Number of cows		45	91	107	213	646
Number of heifers		33	72	77	165	492
Milk sold, lbs.		773,417	1,678,840	1,994,618	4,735,073	14,987,890
Milk sold/cow, lbs.		17,290	18,483	18,568	22,215	23,187
Operating cost of producing milk/cwt.		\$9.10	\$10.37	\$11.20	\$10.71	\$11.12
Total cost of producing milk/cwt.		\$16.94	\$16.18	\$16.44	\$14.33	\$13.90
Price/cwt. milk sold		\$12.74	\$12.97	\$13.41	\$12.86	\$12.96
Purchased dairy feed/cow		\$695	\$738	\$846	\$891	\$953
Purchased dairy feed/cwt. milk		\$4.04	\$4.00	\$4.54	\$4.01	\$4.11
Purchased grain & concentrate as % of milk receipts		29%	30%	33%	30%	29%
Purchased feed & crop expense/cwt milk		\$4.74	\$4.90	\$5.52	\$4.82	\$4.76
<u>Capital Efficiency</u>						
Farm capital/worker		\$209,207	\$241,759	\$260,109	\$262,119	\$300,559
Farm capital/cow		\$9,438	\$8,581	\$8,192	\$7,199	\$6,453
Farm capital/tillable acre owned		\$4,164	\$4,244	\$5,479	\$6,109	\$7,066
Real estate/cow		\$4,774	\$3,733	\$3,676	\$2,752	\$2,383
Machinery investment/cow		\$1,976	\$1,861	\$1,731	\$1,487	\$1,123
Asset turnover ratio		0.30	0.37	0.39	0.50	0.57
<u>Labor Efficiency</u>						
Worker equivalent		2.03	3.23	3.37	5.85	13.87
Operator/manager equivalent		1.21	1.54	1.76	1.90	2.22
Milk sold/worker, lbs.		380,994	519,765	591,875	809,414	1,080,598
Cows/worker		22	28	32	36	47
Labor cost/cow		\$1,070	\$806	\$803	\$742	\$699
Labor cost/tillable acre		\$288	\$234	\$256	\$267	\$368
<u>Profitability & Balance Sheet Analysis</u>						
Net farm income (without appreciation)		\$18,037	\$15,781	\$17,197	\$43,002	\$66,940
Labor & management income/operator		\$ -7,069	\$-13,452	\$-10,491	\$-5,038	\$-21,125
Rate return on all capital with appreciation		-2.5%	-0.1%	-1.0%	1.9%	4.1%
Farm debt/cow		\$2,285	\$2,071	\$2,653	\$2,514	\$3,088
Percent equity		75%	75%	67%	65%	52%

*Average of all farms, not only those reporting data.

FARM BUSINESS CHART FOR SMALL CONVENTIONAL STALL DAIRY FARMS

26 Conventional Stall Dairy Farms with 60 or Less Cows, New York, 2002

Size of Business			Rates of Production			Labor Efficiency	
Worker Equivalent	No. of Cows	Pounds Milk Sold	Pounds Milk Sold Per Cow	Tons Hay Crop DM/Acre	Tons Corn Silage Per Acre	Cows Per Worker	Pounds Milk Sold Per Worker
(14)*	(12)	(12)	(12)	(11)	(11)	(14)	(14)
3.04	60	1,142,159	23,203	4.7	26	37	680,158
3.00	58	1,087,089	22,069	2.9	18	33	581,547
2.62	52	1,073,250	21,489	2.7	16	31	485,566
2.29	50	989,795	21,276	2.3	15	27	471,412
2.14	50	882,582	20,638	2.1	13	24	447,114

2.00	44	815,830	18,454	2.1	12	22	395,644
1.90	42	739,533	16,253	2.1	11	21	340,726
1.61	39	637,428	14,351	1.9	10	20	322,892
1.50	35	478,007	11,279	1.4	9	18	259,980
1.14	31	288,036	8,545	1.2	7	14	170,537

Cost Control							
Grain Bought Per Cow	% Grain is of Milk Receipts	Machinery Costs Per Cow	Labor & Machinery Costs Per Cow	Feed & Crop Expenses Per Cow	Feed & Crop Expenses Per Cwt. Milk		
(12)	(12)	(14)	(14)	(12)	(12)		
\$262	18%	\$198	\$940	\$322	\$3.38		
418	22	355	1,231	505	3.76		
513	24	455	1,343	645	4.11		
575	27	498	1,533	760	4.24		
618	29	575	1,770	848	4.35		

678	31	658	1,858	922	4.71		
775	33	698	1,953	991	5.01		
841	35	752	2,044	1,041	5.47		
904	38	806	2,204	1,103	6.10		
1,101	51	972	2,500	1,314	8.00		

Value and Cost of Producing Milk			Profitability				
Milk Receipts Per Cow	Operating Cost Production Per Cwt.	Total Cost Production Per Cwt.	Net Farm Income Without Appreciation		Labor & Mgmt. Income Per Operator	Change in Net Worth w/Appreciation	
(12)	(12)	(12)	(4)	(12)	(4)	(8)	
\$3,138	\$6.12	\$12.92	\$52,474	\$1,104	\$21,592	\$37,609	
2,929	7.19	14.35	36,571	949	12,767	15,821	
2,741	7.75	15.35	32,817	727	9,360	13,893	
2,657	8.17	16.20	28,311	653	5,649	9,894	
2,514	8.98	17.11	25,407	512	-779	6,721	

2,346	9.37	17.98	18,457	398	-4,263	2,820	
2,111	10.06	18.49	13,858	313	-9,329	-1,150	
1,857	10.64	20.22	9,777	267	-14,064	-7,427	
1,406	11.82	24.35	3,500	80	-18,711	-13,982	
1,005	15.48	28.09	-14,797	-310	-62,193	-30,281	

*Page number of the participant's DFBS where the factor is located.

FARM BUSINESS CHART FOR LARGE CONVENTIONAL STALL DAIRY FARMS

36 Conventional Stall Dairy Farms with More Than 60 Cows, New York, 2002

Size of Business			Rates of Production			Labor Efficiency	
Worker Equivalent	No. of Cows	Pounds Milk Sold	Pounds Milk Sold Per Cow	Tons Hay Crop DM/Acre	Tons Corn Silage Per Acre	Cows Per Worker	Pounds Milk Sold Per Worker
(14)*	(12)	(12)	(12)	(11)	(11)	(14)	(14)
6.85	173	3,517,857	23,588	3.2	19	46	847,783
4.24	120	2,235,710	21,737	3.0	17	41	781,006
3.96	108	1,970,575	20,952	2.9	16	37	703,740
3.58	97	1,744,848	20,281	2.7	16	34	641,261
3.17	85	1,666,685	19,307	2.4	15	31	574,060

3.00	79	1,571,486	18,274	2.2	14	29	533,307
2.75	76	1,393,495	17,018	2.1	13	27	501,028
2.54	72	1,242,817	16,127	1.8	11	26	427,258
2.18	68	1,127,840	15,439	1.5	9	24	370,621
1.50	65	1,005,499	14,099	1.1	6	17	324,348

Cost Control							
Grain Bought Per Cow	% Grain is of Milk Receipts	Machinery Costs Per Cow	Labor & Machinery Costs Per Cow	Feed & Crop Expenses Per Cow	Feed & Crop Expenses Per Cwt. Milk		
(12)	(12)	(14)	(14)	(12)	(12)		
\$408	18%	\$260	\$930	\$585	\$3.34		
529	23	410	1,085	735	3.80		
591	24	492	1,213	771	3.98		
633	27	521	1,282	805	4.46		
705	29	546	1,382	895	4.97		

730	33	578	1,466	938	5.40		
793	35	638	1,603	1,016	5.70		
882	37	758	1,698	1,065	6.10		
938	39	826	1,773	1,139	6.36		
1,159	48	1,416	2,286	1,359	7.36		

Value and Cost of Producing Milk			Profitability				
Milk Receipts Per Cow	Operating Cost Production Per Cwt.	Total Cost Production Per Cwt.	Net Farm Income Without Appreciation		Labor & Mgmt. Income Per Operator	Change in Net Worth w/Apprec.	
(12)	(12)	(12)	(4)	(12)	(4)	(8)	
\$3,129	\$7.38	\$12.39	\$85,219	\$741	\$39,332	\$70,316	
2,777	8.29	13.70	51,636	576	17,140	42,958	
2,663	8.84	14.41	40,123	516	8,266	36,489	
2,577	9.25	15.37	33,608	425	2,703	21,118	
2,477	10.00	16.07	23,611	303	-6,106	4,016	

2,361	10.80	16.74	16,329	168	-11,219	-681	
2,239	11.59	17.37	8,282	103	-16,396	-11,901	
2,088	12.39	18.27	3,128	39	-24,910	-23,157	
1,998	13.20	19.24	-15,230	-199	-59,343	-38,173	
1,809	16.14	22.41	-52,038	-536	-102,122	-81,761	

*Page number of the participant's DFBS where the factor is located.

FARM BUSINESS CHART FOR SMALL FREESTALL DAIRY FARMS

33 Freestall Barn Dairy Farms with 150 or Less Cows, New York, 2002

Size of Business			Rates of Production			Labor Efficiency	
Worker Equivalent	No. of Cows	Pounds Milk Sold	Pounds Milk Sold Per Cow	Tons Hay Crop DM/Acre	Tons Corn Silage Per Acre	Cows Per Worker	Pounds Milk Sold Per Worker
(14)*	(12)	(12)	(12)	(11)	(11)	(14)	(14)
5.84	146	3,247,938	24,088	4.7	23	51	987,946
4.43	140	2,746,918	22,478	3.1	18	44	814,394
4.30	132	2,531,513	21,405	3.0	17	40	726,531
3.98	124	2,406,473	20,350	2.8	15	37	660,292
3.64	117	2,332,116	19,274	2.5	14	33	636,687

3.22	113	1,968,724	18,914	2.3	12	32	616,193
2.87	104	1,744,476	17,707	2.1	11	31	580,368
2.55	90	1,480,398	16,918	1.9	9	29	529,081
2.23	76	1,292,997	14,490	1.6	7	27	462,491
1.81	63	948,590	11,657	1.2	6	22	318,663

Cost Control							
Grain Bought Per Cow	% Grain is of Milk Receipts	Machinery Costs Per Cow	Labor & Machinery Costs Per Cow	Feed & Crop Expenses Per Cow	Feed & Crop Expenses Per Cwt. Milk		
(12)	(12)	(14)	(14)	(12)	(12)		
\$489	23%	\$313	\$922	\$634	\$4.14		
598	27	424	1,073	783	4.56		
643	31	456	1,190	866	4.82		
707	32	506	1,250	890	5.12		
748	34	539	1,351	950	5.43		

880	34	612	1,446	1,146	5.71		
946	35	649	1,532	1,187	5.87		
999	36	689	1,582	1,216	6.18		
1,053	39	754	1,634	1,300	6.65		
1,158	43	884	1,933	1,404	8.46		

Value and Cost of Producing Milk			Profitability				
Milk Receipts Per Cow	Operating Cost Production Per Cwt.	Total Cost Production Per Cwt.	Net Farm Income Without Appreciation		Labor & Mgmt. Income Per Operator	Change in Net Worth w/Apprec.	
(12)	(12)	(12)	(4)	(12)	(4)	(8)	
\$3,177	\$8.06	\$13.11	\$74,708	\$661	\$27,415	\$91,885	
3,008	9.37	14.54	61,971	579	17,512	43,413	
2,851	10.16	15.28	44,860	490	7,567	34,996	
2,716	10.55	15.74	37,812	417	-285	16,132	
2,608	10.76	16.32	26,079	269	-9,009	9,827	

2,546	11.12	16.70	17,397	128	-11,862	-1,832	
2,350	11.55	17.11	8,858	77	-15,899	-12,242	
2,222	12.32	17.71	-39	3	-21,804	-26,363	
1,952	13.47	18.62	-15,986	-168	-37,410	-51,461	
1,610	16.96	23.60	-45,859	-400	-64,630	-86,442	

*Page number of the participant's DFBS where the factor is located.

FARM BUSINESS CHART FOR MEDIUM FREESTALL DAIRY FARMS

33 Freestall Barn Dairy Farms with 151-300 Cows, New York, 2002

Size of Business			Rates of Production			Labor Efficiency	
Worker Equiv- Alent	No. of Cows	Pounds Milk Sold	Pounds Milk Sold Per Cow	Tons Hay Crop DM/Acre	Tons Corn Silage Per Acre	Cows Per Worker	Pounds Milk Sold Per Worker
(14)*	(12)	(12)	(12)	(11)	(11)	(14)	(14)
9.98	289	7,058,624	26,651	4.5	19	57	1,314,584
7.42	277	6,279,950	24,766	3.9	18	50	1,029,075
6.90	263	5,952,419	23,844	3.4	17	44	950,123
6.33	247	5,598,207	22,947	3.1	16	41	916,467
6.06	233	4,938,964	22,396	3.0	15	40	894,970

5.58	202	4,272,306	21,995	2.9	14	40	862,227
5.31	183	3,903,536	21,706	2.8	13	37	821,902
4.95	174	3,778,193	21,115	2.7	13	34	729,011
4.20	159	3,551,740	20,053	2.3	10	28	644,662
3.41	154	3,231,415	18,427	1.5	7	23	516,172

Cost Control							
Grain Bought Per Cow	% Grain is of Milk Receipts	Machinery Costs Per Cow	Labor & Machinery Costs Per Cow	Feed & Crop Expenses Per Cow	Feed & Crop Expenses Per Cwt. Milk		
(12)	(12)	(14)	(14)	(12)	(12)		
\$554	21%	\$401	\$923	\$740	\$3.58		
730	25	489	1,099	909	4.10		
775	27	557	1,229	977	4.45		
796	28	607	1,275	1,028	4.68		
836	30	615	1,317	1,051	5.02		

895	32	644	1,357	1,095	5.12		
933	33	699	1,411	1,139	5.25		
965	34	729	1,570	1,241	5.35		
1,040	35	785	1,754	1,279	5.57		
1,147	40	1,001	2,259	1,399	5.82		

Value and Cost of Producing Milk			Profitability				
Milk Receipts Per Cow	Operating Cost Production Per Cwt.	Total Cost Production Per Cwt.	Net Farm Income Without Appreciation		Labor & Mgmt. Income Per Operator	Change in Net Worth w/Apprec.	
(12)	(12)	(12)	Total	Per Cow	(4)	(8)	
\$3,345	\$8.01	\$12.01	\$218,869	\$839	\$65,424	\$182,070	
3,067	8.96	12.69	112,653	548	49,976	128,417	
2,997	9.46	13.38	90,477	390	25,149	96,164	
2,969	10.04	13.79	76,725	352	12,318	56,567	
2,882	10.80	14.25	65,859	321	7,276	24,649	

2,840	11.28	14.43	56,493	289	1,459	-7,554	
2,794	11.72	14.84	42,958	177	-4,608	-20,188	
2,740	12.12	15.63	4,759	13	-24,459	-44,948	
2,648	12.43	17.28	-44,102	-225	-88,725	-68,537	
2,395	15.23	19.01	-103,914	-601	-157,942	-129,423	

*Page number of the participant's DFBS where the factor is located.

FARM BUSINESS CHART FOR LARGE FREESTALL DAIRY FARMS

71 Freestall Barn Dairy Farms with 300 or More Cows, New York, 2002

Size of Business			Rates of Production			Labor Efficiency	
Worker Equiv- alent	No. of Cows	Pounds Milk Sold	Pounds Milk Sold Per Cow	Tons Hay Crop DM/Acre	Tons Corn Silage Per Acre	Cows Per Worker	Pounds Milk Sold Per Worker
(14)*	(12)	(12)	(12)	(11)	(11)	(14)	(14)
26.85	1,438	33,375,635	26,730	7.5	28	70	1,497,781
22.38	1,039	24,914,975	25,227	4.7	19	55	1,286,184
16.82	812	19,921,803	24,290	4.2	18	51	1,206,106
14.22	651	15,521,194	23,803	3.9	17	48	1,139,441
13.04	568	13,206,915	23,449	3.6	17	47	1,079,190

11.40	499	11,707,064	23,093	3.2	15	44	1,004,950
10.45	433	9,447,569	22,657	3.1	15	42	963,397
9.25	390	8,515,842	22,111	2.9	14	39	905,762
8.25	356	7,883,906	21,338	2.6	13	37	825,804
7.03	323	6,584,485	17,496	1.7	11	32	697,945

Cost Control							
Grain Bought Per Cow	% Grain is of Milk Receipts	Machinery Costs Per Cow	Labor & Machinery Costs Per Cow	Feed & Crop Expenses Per Cow	Feed & Crop Expenses Per Cwt. Milk		
(12)	(12)	(14)	(14)	(12)	(12)		(12)
\$626	22%	\$306	\$835	\$823	\$3.59		
732	25	391	996	935	4.19		
769	27	428	1,068	974	4.40		
821	28	459	1,147	1,014	4.60		
882	29	503	1,212	1,074	4.73		

911	30	533	1,244	1,118	4.89		
930	31	561	1,289	1,148	5.03		
970	33	597	1,337	1,211	5.21		
1,045	34	642	1,439	1,263	5.38		
1,136	38	713	1,571	1,384	5.99		

Value and Cost of Producing Milk			Profitability				
Milk Receipts Per Cow	Operating Cost Production Per Cwt.	Total Cost Production Per Cwt.	Net Farm Income Without Appreciation		Labor & Mgmt. Income Per Operator	Change in Net Worth w/Apprec.	
(12)	(12)	(12)	(4)	(12)	(4)	(8)	
\$3,544	\$8.96	\$11.79	\$471,354	\$661	\$181,847	\$472,425	
3,281	9.93	12.70	263,076	430	68,716	143,397	
3,146	10.20	13.01	168,151	296	35,940	105,539	
3,065	10.59	13.39	114,248	236	12,274	67,967	
3,004	10.89	13.73	91,535	167	-2,400	22,661	

2,955	11.26	14.00	36,778	68	-26,105	-20,290	
2,872	11.65	14.55	1,926	4	-42,435	-56,598	
2,825	12.08	15.05	-19,585	-31	-61,693	-132,736	
2,728	12.57	15.53	-100,756	-168	-101,989	-199,083	
2,390	13.66	17.51	-304,292	-555	-338,297	-394,224	

*Page number of the participant's DFBS where the factor is located.

IDENTIFY AND SET GOALS

If businesses are to be successful, they must have direction. Written goals help provide businesses with an identifiable direction over both the long and short term. Goal setting is as important on a dairy farm as it is in other businesses. Written goals are a tool which farm operators can use to ensure that the business continues to move in the desired direction. Goals should be SMART:

1. Goals should be Specific.
2. Goals should be Measurable.
3. Goals should be Achievable but challenging.
4. Goals should be Rewarding.
5. Goals should be Timed with a designated date by which the goal will be achieved.

Goal setting on a dairy farm should be a process for writing down and agreeing on goals that you have already given some thought to. It is also important to remember that once you write out your goals they are not cast in concrete. If a change takes place which has a major impact on the farm business, the goals should be reworked to accommodate that change. Refer to your goals as often as necessary to keep the farm business progressing.

It is important to identify both objectives (long-range) and goals (short-range) when looking at the future of your farm business.

A suggested format for writing out your goals is as follows:

- a. Begin with a mission statement which describes why the business exists based on the preferences and values of the owners.
- b. Identify 4-6 objectives.
- c. Identify SMART goals.

Worksheet for Setting Goals

I. Mission and Objectives

Worksheet for Setting Goals (Continued)

II. Goals

What	How	When	Who is Responsible
_____	_____	_____	_____
_____	_____	_____	_____
_____	_____	_____	_____
_____	_____	_____	_____
_____	_____	_____	_____
_____	_____	_____	_____
_____	_____	_____	_____
_____	_____	_____	_____
_____	_____	_____	_____
_____	_____	_____	_____
_____	_____	_____	_____
_____	_____	_____	_____
_____	_____	_____	_____
_____	_____	_____	_____
_____	_____	_____	_____
_____	_____	_____	_____
_____	_____	_____	_____
_____	_____	_____	_____
_____	_____	_____	_____
_____	_____	_____	_____
_____	_____	_____	_____

Summarize Your Business Performance

The Farm Business and Financial Analysis Charts on pages 23 and 27-29 can be used to help identify strengths and weaknesses of your farm business. Identify three major strengths and three areas of your farm business that need improvement.

Strengths: _____

Needs improvement: _____

GLOSSARY AND LOCATION OF COMMON TERMS

Accounts Payable - Open accounts or bills owed to feed and supply firms, cattle dealers, veterinarians and other providers of farm services and supplies.

Accounts Receivable - Outstanding receipts from items sold or sales proceeds not yet received, such as the payment for December milk sales received in January.

Accrual Expenses - (defined on page 3)

Accrual Receipts - (defined on page 4)

Annual Cash Flow Statement - (defined on page 11)

Appreciation - (defined on page 5)

Asset Turnover Ratio - The ratio of total farm income to total farm assets, calculated by dividing total accrual operating receipts plus appreciation by average total farm assets.

Balance Sheet - A "snapshot" of the business financial position at a given point in time, usually December 31. The balance sheet equates the value of assets to liabilities plus net worth.

bST Usage - An estimate of the percentage of herd, on average, that was supplemented with bovine somatotropin during the year.

Capital Efficiency - The amount of capital invested per production unit. Relatively high investments per worker with low to moderate investments per cow imply efficient use of capital.

Cash From Nonfarm Capital Used in the Business - Transfers of money from nonfarm savings or investments to the farm business where it is used to pay operating expenses, make debt payments and/or capital purchases.

Cash Flow Coverage Ratio - (defined on page 13)

Cash Paid - (defined on page 2)

Cash Receipts - (defined on page 4)

Change in Accounts Payable - (defined on page 3)

Change in Accounts Receivable - (defined on page 4)

Change in Inventory - (defined on page 2)

Cost of Term Debt - A weighted average of the cost of borrowed capital to the farm. Calculate by multiplying end of year principal of each loan that is borrowed by the interest rate for each loan at that time. Add up each amount that is calculated for each loan and then divide by total amount of borrowed funds. Do not include accounts payable, operating debt or advanced government receipts. This information is found on pages 8 & 9 of the data entry form.

Culling Rate - (defined on page 17)

Current Portion - (defined on page 7)

Current Ratio – Measures the extent to which current farm assets, if liquidated, would cover current farm liabilities. Calculated as current farm assets at end year divided by current farm liabilities at end year.

Dairy (farm) - A farm business where dairy farming is the primary enterprise, operating and managing this farm is a full-time occupation for one or more people and cropland is owned.

Dairy Cash-Crop (farm) - Operating and managing this farm is the full-time occupation of one or more people, cropland is owned but crop sales exceed 10 percent of accrual milk receipts.

Debt Coverage Ratio – (defined on page 13)

Debt Per Cow - Total end-of-year debt divided by end-of-year number of cows.

Debt to Asset Ratios - (defined on page 9)

Depreciation Expense Ratio – Machinery and building depreciation divided by total accrual receipts.

Dry Matter - The amount or proportion of dry material that remains after all water is removed. Commonly used to measure dry matter percent and tons of dry matter in feed.

Equity Capital - The farm operator/manager's owned capital or farm net worth.

Expansion Livestock - Purchased dairy cattle and other livestock that cause an increase in herd size from the beginning to the end of the year.

Farm Debt Payments as Percent of Milk Sales - Amount of milk income committed to debt repayment, calculated by dividing planned debt payments by total milk receipts. A reliable measure of repayment ability, see page 14.

Farm Debt Payments Per Cow - Planned or scheduled debt payments per cow represent the repayment plan scheduled at the beginning of the year divided by the average number of cows for the year. This measure of repayment ability is used in the Financial Analysis Chart.

Financial Lease - A long-term non-cancelable contract giving the lessee use of an asset in exchange for a series of lease payments. The term of a financial lease usually covers a major portion of the economic life of the asset. The lease is a substitute for purchase. The lessor retains ownership of the asset.

Hired Labor Expense per Hired Worker Equivalent – The total cost to the farm per hired worker equivalent. Divide accrual hired labor expense by number of hired plus family paid worker equivalents.

Hired Labor Expense as % of Milk Sales – The percentage of the gross milk receipts that is used for labor expense. Divide accrual hired labor expense by accrual milk sales.

Income Statement - A complete and accurate account of farm business receipts and expenses used to measure profitability over a period of time such as one year or one month.

Interest Expense Ratio – Accrual interest expense divided by total accrual receipts.

Labor and Management Income - (defined on page 6)

Labor and Management Income Per Operator - The return to the owner/manager's labor and management per full-time operator.

Labor Efficiency - Production capacity and output per worker.

Leverage Ratio - (defined on page 9)

Liquidity - Ability of business to generate cash to make debt payments or to convert assets to cash.

Net Farm Income - (defined on page 5)

Net Farm Income from Operations Ratio - (defined on page 7)

Net Milk Receipts – Accrual milk receipts less milk marketing expense.

Net Worth - The value of assets less liabilities equal net worth. It is the equity the owner has in owned assets.

Operating Costs of Producing Milk - (defined on page 18)

Operating Expense Ratio – Total accrual expenses less interest and machinery and building depreciation, divided by total accrual receipts.

Opportunity Costs - The cost or charge made for using a resource based on its value in its most likely alternative use. The opportunity cost of a farmer's labor and management is the value he/she would receive if employed in his/her most qualified alternative position.

Other Livestock Expenses - All other dairy herd and livestock expenses not included in more specific categories. Other livestock expenses include; bST, DHIC, registration fees and transfers.

Part-Time Dairy (farm) - Dairy farming is the primary enterprise, cropland is owned but operating and managing this farm is not a full-time occupation for one or more people.

Personal Withdrawals and Family Expenditures Including Nonfarm Debt Payments - All the money removed from the farm business for personal or nonfarm use including family living expenses, health and life insurance, income taxes, nonfarm debt payments, and investments.

Profitability - The return or net income the owner/manager receives for using one or more of his or her resources in the farm business. True "economic profit" is what remains after deducting all the costs including the opportunity costs of the owner/manager's labor, management, and equity capital.

Purchased Inputs Cost of Producing Milk - (defined on page 18)

Renter - Farm business owner/operator owns no tillable land and commonly rents all other farm real estate.

Repayment Analysis - An evaluation of the business' ability to make planned debt payments.

Replacement Livestock - Dairy cattle and other livestock purchased to replace those that were culled or sold from the herd during the year.

Return on Equity Capital - (defined on page 7)

Return on Total Capital - (defined on page 7)

Solvency - The extent or ability of assets to cover or pay liabilities. Debt/asset and leverage ratios are common measures of solvency.

Total Costs of Producing Milk - (defined on page 18)

Whole Farm Method - A procedure used to calculate costs of producing milk on dairy farms without using enterprise cost accounts. All non-milk receipts are assigned a cost equal to their sale value and deducted from total farm expenses to determine the costs of producing milk.

Working Capital – A theoretical measure of the amount of funds available to purchase inputs and inventory items after the sale of current farm assets and payment of all current farm liabilities. Calculated as current farm assets at end year less current farm liabilities at end year.

INDEX

	<u>Page(s)</u>		<u>Page(s)</u>
Accounts Payable	3,8	Expansion Livestock	3,11
Accounts Receivable	4,8	Expenses	3
Accrual Expenses	3,5	Farm Business Chart.....	23, 27-29, 32-36
Accrual Receipts.....	4,5	Farm Debt Payments as Percent	
Acreage.....	15	of Milk Sales.....	12
Advanced Government Receipts	7,8	Farm Debt Payments Per Cow.....	12
Age	19	Financial Analysis Chart	29
Amount Available for Debt Service	13	Financial Lease.....	8
Annual Cash Flow Statement	11	Hired Labor Expenses per Hired Worker	
Appreciation	10,17	Equivalent.....	20
Asset Turnover Ratio.....	19	Hired Labor Expense as % of Milk Sales.....	20
Balance Sheet	8	Income Statement	2
Barn Type	2	Inflows.....	11
bST Usage	2	Interest Expense Ratio	19
Business Type.....	2	Labor & Management Income.....	6
Capital Efficiency	19	Labor & Management Income Per Operator	6
Cash From Nonfarm Capital Used in		Labor Efficiency	19
the Business	11	Land Resources	15
Cash Flow Coverage Ratio	13	Leverage Ratio.....	9
Cash Paid.....	2	Liquidity	9
Cash Receipts	4,11	Lost Capital	9
Certified Organic Milk Producer	2	Machinery Expenses.....	3,16
Change in Accounts Payable	3	Marketing Report.....	25
Change in Accounts Receivable	4	Milk Price	25, 26
Change in Inventory	2,3	Milk Production.....	17
Change in Net Worth.....	10	Milking Frequency	2
Cost of Term Debt	9	Milking System	2
Crop Expenses	3,16	Money Borrowed.....	11
Crop/Dairy Ratios.....	15	Net Farm Income.....	5
Culling Rate.....	17	Net Farm Income from Operations Ratio	7
Current Portion	7,8	Net Investment.....	9
Current Ratio	9	Net Milk Receipts.....	18
Dairy (farm).....	2	Net Worth	8
Dairy Cash-Crop (farm).....	2	Number of Cows.....	17
Dairy Replacements.....	24	Operating Costs of Prod. Milk.....	18
Debt Coverage Ratio	13	Operating Expense Ratio	19
Debt per Cow.....	9	Opportunity Cost	6
Debt to Asset Ratios	9	Other Livestock Expenses	3
Deferred Taxes	9	Outflows	11
Depreciation.....	3, 9	Part-Time Cash-Crop Dairy (farm)	2
Depreciation Expense Ratio	19	Part-Time Dairy (farm).....	2
Dry Matter	15	Percent Equity	9
Education.....	19	Personal Withdrawals and Family Expenditures	
Equity Capital	7	Including Nonfarm Debt Payments	11

Principal Payments	11
Profitability	4
Purchased Inputs Cost	18
Receipts	4
Record System	2
Repayment Analysis	13
Replacement Livestock.....	3
Retained Earnings.....	10
Return on Equity Capital	7

Return on Total Capital	7
Rotational Grazing.....	2,16
Solvency	9
Total Costs of Producing Milk	18
Whole Farm Method.....	18
Worker Equivalent	19
Working Capital	9
Yields Per Acre.....	15

OTHER A.E.M. EXTENSION BULLETINS

EB No	Title	Fee (if applicable)	Author(s)
2004-14	Dairy Farm Business Summary, Intensive Grazing Farms, New York, 2003	(\$16.00)	Conneman, G., Grace, J., Karszes, J., Benson, A., Putnam, L., Staehr, A., and J. Degni
2004-13	A New Producer Milk Marketing Contract©: Costs, Risks, Benefits, and Feasibility of a Cooperative Financing Model	(\$12.00)	Richards, S.
2004-12	Using Crop Insurance: Profiles of 13 farmers who use crop insurance as a risk management tool	(\$12.00)	Richards, S., Sheils, C., Jacobs, E., Ashton, J., McGonigal, J., and J. Forrett
2004-11	Dairy Farm Business Summary, Western and Central Plain Region, 2003	(\$12.00)	Knoblauch, W., Putnam, L., Karszes, J., Hanchar, J., Murphy, J. and J. Barry
2004-10	Dairy Farm Business Summary, Northern Hudson Region, 2003	(\$12.00)	Conneman, G., Putnam, L., Wickswat, C., Buxton, S. and J. Karszes
2004-09	Dairy Farm Business Summary, New York Large Herd Farms, 300 Cows or Larger, 2003	(\$16.00)	Karszes, J., Knoblauch, W. and L. Putnam
2004-08	Starting An Ag Business? A Preplanning Guide	(\$7.00)	Richards, S.
2004-07	Doing Business in New York State: Structures and Strategies		Anderson, B., Henehan B. and C. Sullivan
2004-06	A Compilation of Smart Marketing Articles November 2001 - November 2003		Uva, W.
2004-05	Harvesting Change: A Planning Workbook for Apple Growers	(\$57.00)	Sheils, C. and A. DeMarree
2004-04	Harvesting Change: New York Apple Growers Share Their Decision-Making Strategies	(\$17.00)	Sheils, C., Gott, D., DesCartes, M., McGonigal, J., Staehr, E and R. Maltz
2004-03	Do I Need Crop Insurance? Self evaluation crop insurance as a risk management tool in New York State	(\$12.00)	Richards, S.

Paper copies are being replaced by electronic Portable Document Files (PDFs). To request PDFs of AEM publications, write to (be sure to include your e-mail address): Publications, Department of Applied Economics and Management, Warren Hall, Cornell University, Ithaca, NY 14853-7801. If a fee is indicated, please include a check or money order made payable to Cornell University for the amount of your purchase. Visit our Web site (<http://aem.cornell.edu/outreach/materials.htm>) for a more complete list of recent bulletins.