

DELTA KAPPA EPSILON FRATERNITY

Delta Chi Chapter at Cornell University

Office of the Alumni Historian

ΔX of ΔKE Special Study #11: Architectural Drawings and Artistic Renderings of the Chapter’s Lodge

A selection of William Henry Miller’s original architectural drawings and subsequent artistic renderings of the Cornell Deke House are presented.

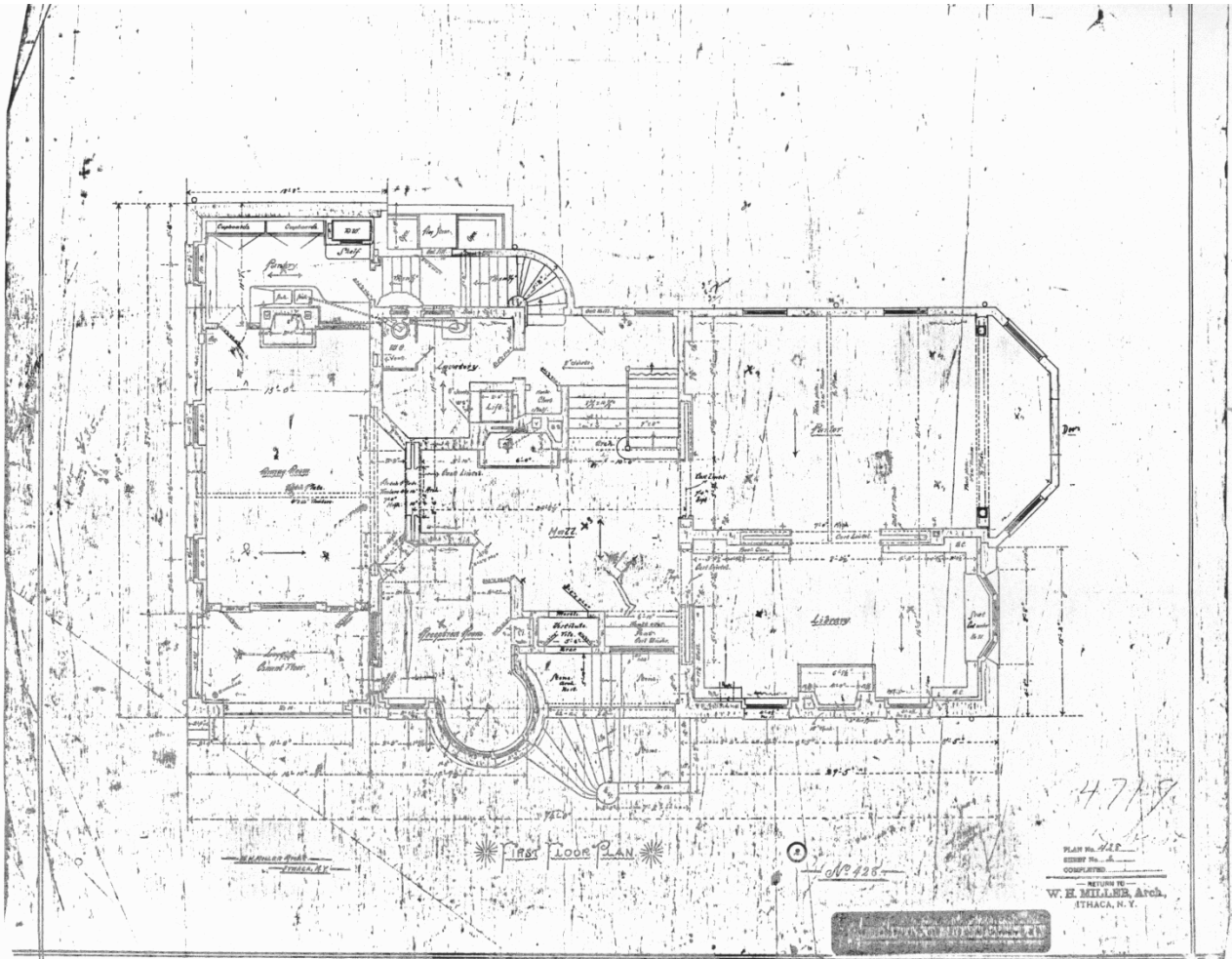
Table of Contents

William Henry Miller Architectural Drawings, Plan #428.....2
 Sheet #2: Lodge, First Floor Plan2
 Sheet #3: Lodge, Second Floor Plan.....3
 Sheet #4: Lodge, Third floor Plan3
 Sheet #6: Lodge, West Elevation.....4
 Sheet #7: Lodge, South Elevation.....4
 Sheet #8: Lodge, East Elevation5
 Sheet #9: Lodge, North Elevation.....5

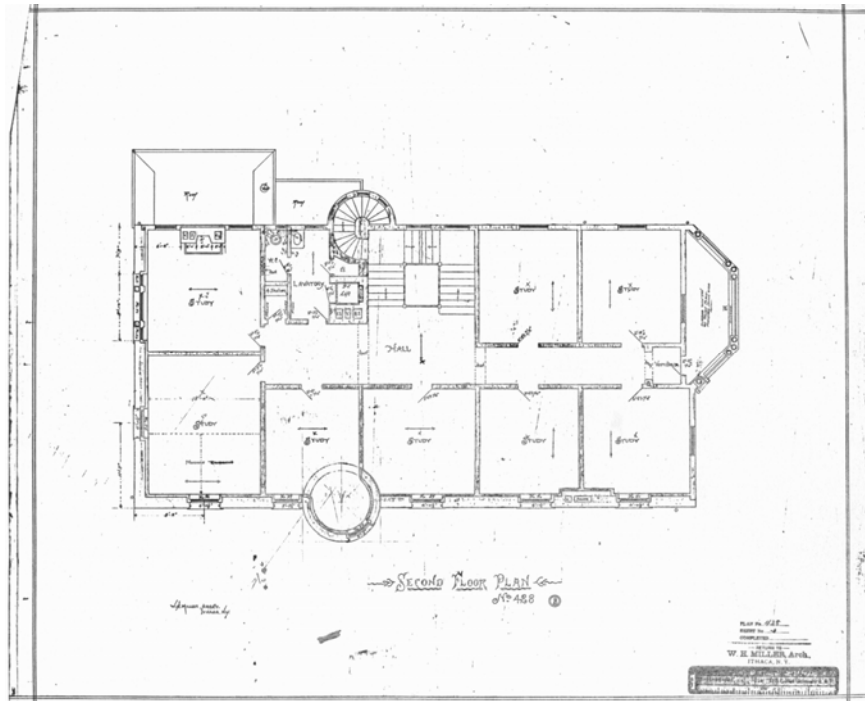
Lithographic Sketches and Oil Paintings.....6
 Sketch 1: ΔKE1-069, Illustration, *Troy Daily Times*, 2 April 1898.6
 Sketch 2: Delta Chi Chapter Letter, 1934.....6
 Sketch 3: ΔKE3-026, Rush Book, “Delta Chi of Delta Kappa Epsilon,” ca. 1967.7
 Sketch 4: ΔKE1-074, Lithograph by J. (or R.) Caruso, 1967.....7
 Sketch 5: Lodge, Unidentified Stewart Howe Artist, ca. 2000.....8
 Painting #1: Lodge, Memorial World War II Painting by Charles Baskerville ’19.8

References.....9
 Miller Plans.....9
 20th Century Renovation Plans11
 Sketch and Painting References.....12

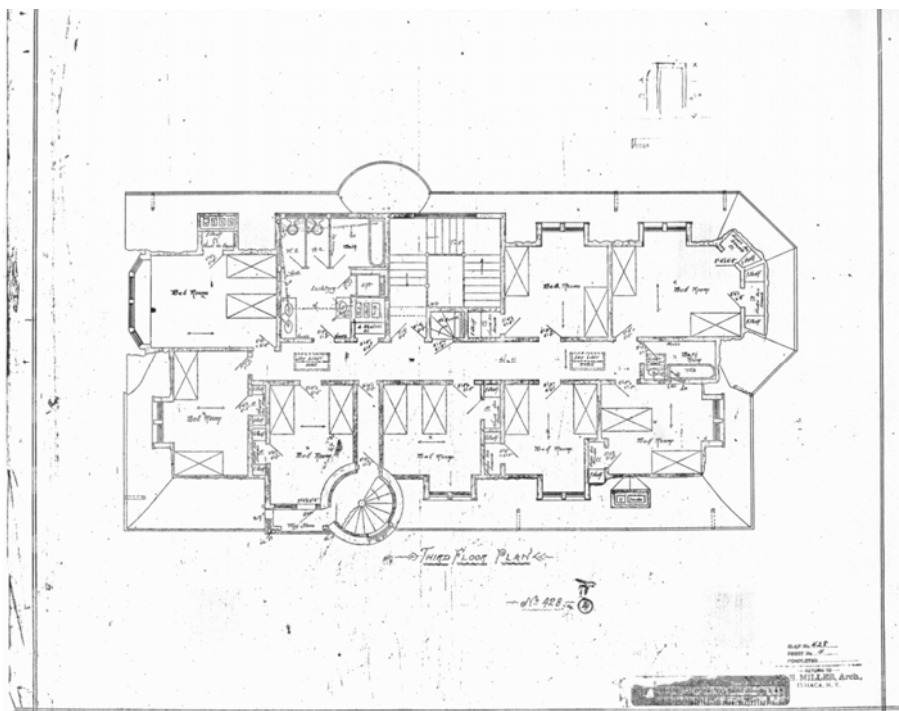
William Henry Miller Architectural Drawings, Plan #428.



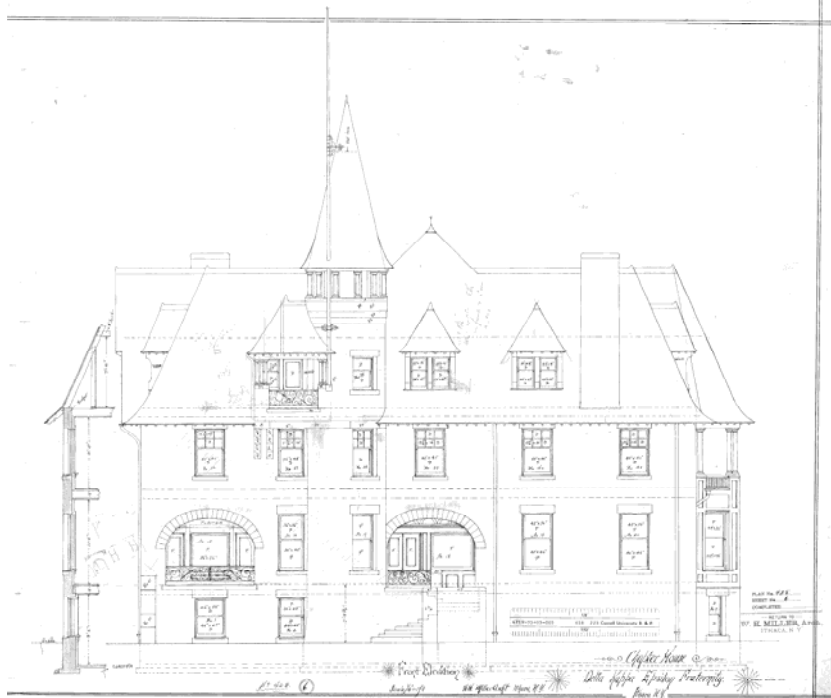
Sheet #2: Lodge, First Floor Plan



Sheet #3: Lodge, Second Floor Plan



Sheet #4: Lodge, Third floor Plan



Sheet #6: Lodge, West Elevation



Sheet #7: Lodge, South Elevation

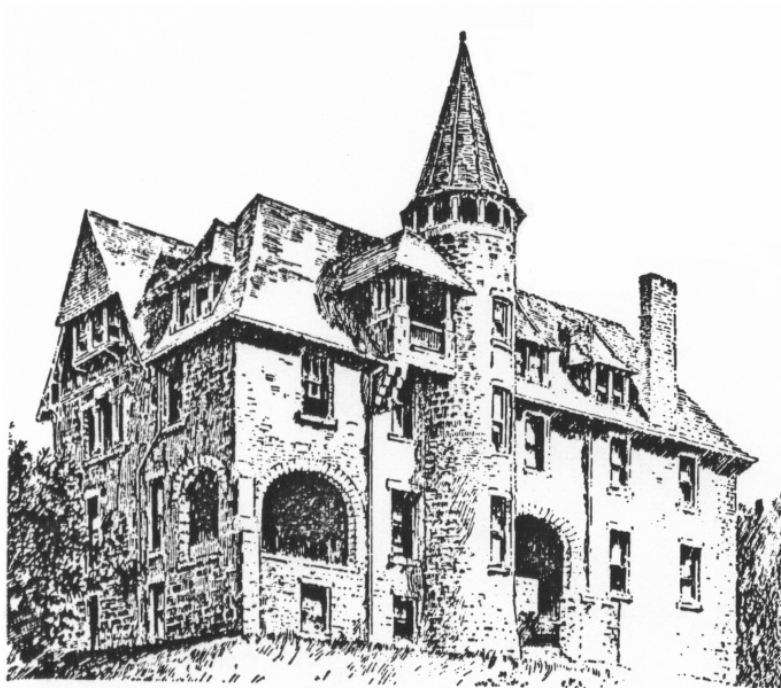


Sheet #8: Lodge, East Elevation



Sheet #9: Lodge, North Elevation

Lithographic Sketches and Oil Paintings



Sketch 1: ΔKE1-069, Illustration, *Troy Daily Times*, 2 April 1898.



Sketch 2: Delta Chi Chapter Letter, 1934.



Sketch 3: ΔKE3-026, Rush Book, “Delta Chi of Delta Kappa Epsilon,” ca. 1967.



Sketch 4: ΔKE1-074, Lithograph by J. (or R.) Caruso, 1967.



Sketch 5: Lodge, Unidentified Stewart Howe Artist, ca. 2000.



**Painting #1: Lodge, Memorial World War II Painting by Charles Baskerville '19.
(before restoration)**

References

Miller Plans

Drawings of the Delta Kappa Epsilon lodge at 13 South Avenue, Ithaca NY, are held on microfilm by the Cornell University Office of Planning, Design and Construction (PDC), Engineering Services Department, Facilities Information Group. The general accession number for the drawing series is 4719-VV-WW-XXX-YYY-ZZZ with YYY denoting the microfilm roll and ZZZ specifying the frame number on that roll.

W. H. Miller Plan #428		
Accession Number 4719-33-03-	Sheet Number	Title or Description
	1	Missing. Possibly the foundation or basement plan.
001-018-219	2	First Floor Plan
002-018-220	3	Second Floor Plan
003-018-221	4	Third Floor Plan
004-018-222	5	Roof Plan
005-018-223	6	Front Elevation
006-018-224	7	South Elevation
007-018-225	8	East Elevation
009-018-227	9	North Elevation
01?-018-228	10	3/4" Scale of Hall view "looking towards mantel" view "looking towards vestibule door"
011-018-229	11	3/4" Scale of Library view "looking towards bay" view "looking towards mantel" view "doors to parlor"
012-018-230	12	3/4" Scale of Dining Room view "looking towards mantel" view "windows - north side" view "west end of dining room" view " door to

W. H. Miller Plan #428		
Accession Number 4719-33-03-	Sheet Number	Title or Description
		loggia - reception room"
013-018-231	13	Finish of Second and Third Stories view "window in chamber over dining room" view "mantel in study over dining room" view "second and third story doors" view "finish of second story windows" view "plan of 2nd and 3rd story architrave"
014-018-232		Dining Room Finish
015-018-233	15	3/4" Scale of Pantry view "looking towards cupboards" view "looking towards dining room"
016-018-234	16	3/4" Scale of Front Entrance view "plan of front entrance" view "front entrance"
018-018-236	17	3/4" Scale of Front Entrance view "inside of outside vestibule door" view "outside of inside vestibule door"

The following Miller drawings are not a part of the "Plan Number 428" drawing set:

Additional W. H. Miller Drawings	
Accession Number 4719-33-03-	Title or Description
008-018-226	1-1/2" Scale Detail of Windows on Stair Landing (12/11/03)
017-018-235	Mantel For D.K.E. Fraternity
019-018-237	Top Plan of Tower Porch

None of the drawings prepared by the firm of [Arthur N.] Gibb and Waltz for the 1910 addition to the lodge have been located.

20th Century Renovation Plans

The following drawings pertain to alterations made to the lodge in 1943 and in the 1960s.

1943 Alteration Drawings	
Accession Number 4719-21-43-	Title or Description
001-004-119	"Alterations in DKE, 13 South Avenue" view "third floor bath" view "second floor bath" view "coat room conversion" view "second floor landing"
001-006-173	"Floor Plan Sketches" by John S. Banta '43

Heating & Electric System Drawings	
Accession Number 4719-81-	Title or Description
65-201-040-049	"Heating - Basement Plan" dated 12/13/65
65-201-040-050	"Heating - Basement Plan" dated 12/13/65
65-201-040-051	"Heating - Basement Plan" dated 12/13/65
65-201-040-052	"Heating - Basement Plan" dated 12/13/65
67-401-042-481	"Sprinkler - Basement Plan" dated 6/19/67
67-401-042-482	"Sprinkler - First Floor Plan" dated 6/19/67
67-401-042-483	"Sprinkler - Second Floor Plan" dated 6/19/67
67-401-042-484	"Sprinkler - Third Floor Plan" dated 6/19/67
67-401-042-485	"Sprinkler - Attic Plan" dated 6/19/67
67-601-046-112	"6" Fire Line to 13 South" dated 6-23-67
73-301-052-135	"Sprinkler Low Point Drains" (Four Floor Plans)

Sketch and Painting References

- Anon., "World War II Memorial: E. V. Stebbins To Make Presentation Address At Dedication Ceremonies, Alumni Weekend." *The Delta Chi Deke*, X, #3 (October 1947), p. 1
- Cornell, Alonzo B., "A Romantic Story; The Founding of Cornell University as Told by the Son of the Founder," Supplement, *Troy Daily Times*, 2 April 1898, pg. 21. Reproduced in an essay by Ms. Carol Sisler appearing in the Fall 1980 newsletter of Historic Ithaca and Tompkins County.
- Weadon, Donald A., Jr. "Newly Commissioned Lithograph is Available to Alumni." *The Delta Chi Deke*, Winter 1967, p. 1. (Caruso Lithograph, ΔKE1-074)

Author/Creator

Fogle, Homer William, Jr. 1948-

Title

ΔX of ΔKE Special Study #11: Architectural Drawings and Artistic Renderings of the Chapter's Lodge / H. William Fogle, Jr.

Published

Ithaca NY: Delta Chi Association, 2006

Subjects

Baskerville, Charles, 1896-1994
College societies, Greek letter --Delta Kappa Epsilon
Cornell University, Delta Kappa Epsilon
Deke House (Ithaca N.Y.) --History
Delta Kappa Epsilon—History
Drawings, Architectural
Lithographs
Miller, William Henry, 1848-1922

Summary/Abstract

The author tabulates the various architectural drawings, lithographic sketches and one oil painting that depict the lodge of the Delta Chi chapter of Delta Kappa Epsilon at Cornell University. The paper is illustrated with selected floor plans, elevations, sketch images and photography.

Series

ΔX of ΔKE Special Study

Description

12 p; ill; 28 cm.

Electronic reproduction.

Original, 23 July 2006.

Mode of access: World Wide Web.

System requirements: Internet connectivity, World Wide Web browser and Adobe Acrobat reader.

Copyright: ©2006 —Delta Chi Association, Ithaca NY.