

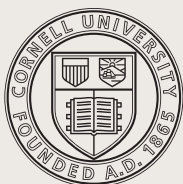
A stylized black logo consisting of a central circle with two curved lines extending from it, resembling a pair of wings or a stylized 'C'.

Cornell
Institute for
Healthy Futures

A photograph of a field of tulips in various colors, including pink, red, yellow, and white, with a blurred building in the background.

ANNUAL REPORT 2022

INNOVATING ACROSS HEALTH,
HOSPITALITY, AND DESIGN



Cornell University

MEMBER ORGANIZATIONS

FOUNDING MEMBERS



Melissa Ceriale, P '15, '16, '18, *Emertius Member, Board of Trustees*, Montefiore Medicine



CORPORATE MEMBERS



THANK YOU TO OUR MEMBERS!

TABLE OF CONTENTS



Message from our Directors
page 4

Mission
page 5

Leadership
pages 6-7



ENGAGE

Outreach

page 8



INSPIRE

Education

page 16



INNOVATE

Research

page 23

A MESSAGE FROM THE DIRECTORS



Mardelle Shepley
Executive Director, CIHF
Professor, Department of HumanCentered Design
College of Human Ecology



Heather Kolakowski
Associate Director, CIHF
Lecturer, Nolan School of Hotel Administration
SC Johnson College of Business



Brooke Hollis
Co-Founder and Executive Director
Emeritus
Professor, Sloan Program in Health Administration
College of Human Ecology



Nicolas Ziebarth
Associate Director, CIHF
Associate Professor, Sloan, Policy and Analysis
Management
Brooks School of Public Policy

We are pleased to present the Cornell Institute for Healthy Futures' sixth Annual Report. In fall of 2021 we celebrated our five-year anniversary via a webinar presented by current and past Institute directors. It was the kickoff event for a very exciting 2021-2022, a year earmarked by promise. There were several transitions over the course of the academic year.

While CIHF programming was online in the fall of 2021, we transitioned to an online/in-person hybrid in spring 2022. We held our second winter session course, Making a Difference by Design, online with 12 students enrolled. While we remained masked during our spring seminar course in health, hospitality and design, our class was in-person and half of our speakers were able to participate on campus and in person. We look forward to offering our summer course in person on Ithaca's campus this July.

During this period, we brought on new staff members, Christine Tanner and Allison DeDominick, inspired and committed individuals who have contributed to a dynamic and creative organizational culture. Mardelle Shepley, Heather Kolakowski and Nicolas Ziebarth continued to serve as directors and were joined by a new Founding member, as well as several new industry and faculty scholars.

The Institute stayed active with three webinars, a roundtable and two board meetings. We also held two student competitions—a photography contest where students were asked to share images of resilience, and a charrette, Safety by Design, which involved a collaborative effort between CIHF and the Department of Public Health at Johns Hopkins University.

We have several innovative activities planned for the coming year. In addition to a 2022 fall webinar on providing affordable senior housing, we have already started planning our first large Symposium since 2016, scheduled for May 2023. The theme, Reinventing Health, Hospitality, and Design, will serve to relaunch the Institute into a new epoch of exploration and collaboration.

The following report documents our accomplishments of the last year and reflects on the current status of the Institute.

MISSION ENGAGE - INSPIRE - INNOVATE



•••••
 • *The mission of the Cornell Institute for Healthy* •
 • *Futures is to provide a transdisciplinary platform for* •
 • *integrating hospitality, health management/policy,* •
 • *and design to enhance service excellence in healthcare,* •
 • *wellness, senior living, and related industries.* •
 •••••

GOVERNING BOARD

The Cornell Institute for Healthy Futures is a cross-campus collaboration between the College of Human Ecology, the Brooks School of Public Policy, and the Nolan School of Hotel Administration. The Deans of the schools are chairs of the governing board.



Colleen Barry

Dean
Jeb E. Brooks School of
Public Policy



Rachel Dunifon

*Rebecca Q. and James C.
Morgan Dean*
College of Human Ecology



Andrew Karolyi

Dean
SC Johnson College of
Business



Kate Walsh

Dean
& *E.M. Statler Professor*
Nolan School of Hotel
Administration
SC Johnson College of Business

CIHF STAFF



**Christine
Tanner**

Program Manager



**Allison
DeDominick**

Program Assistant

ADVISORY BOARD



Ruth Browne

President & CEO
Ronald McDonald House NY



Melissa Ceriale

Emeritus Board of Trustees
Montefiore Medicine



Andrew Chen

(July 2022)
President
Tyson BioResearch, Inc.



Robert Corona

CEO
Upstate Medical University



Neil Jacobs

CEO
Six Sense Hotels Resorts Spas



Joe Jedlowski

President
Distinctive Living



Mary Leary

CEO & President
Mather



Tim McCarthy

Partner & Managing Principal
Hart Howerton



Bradford Perkins

Chairman & CEO
Perkins Eastman
Architects



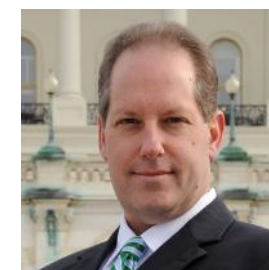
Robert Ritz

CEO
MercyOne



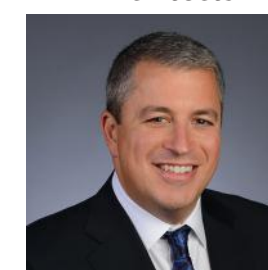
Lynne Rizk

Principal Director of
Health NY
HKS, Inc.



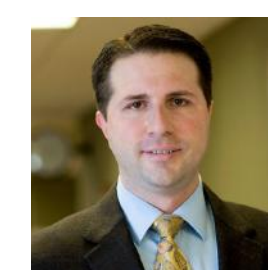
David S. Schless

President & CEO
American Seniors Housing
Association



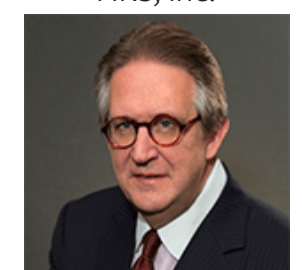
Kenneth Segarnick

Chief Corporate Officer
Brandywine Living



Martin Stallone

Chief Executive Officer
Cayuga Medical



Peter Yesawich

Chief Brand Officer
Yesawich Holding LLC

ENGAGE



A core mission of the Institute is to provide opportunities for active engagement between industry, faculty, and students. During the 2021-22 academic year CIHF undertook several initiatives to achieve these goals including the following symposia, roundtables, panels, seminars, and social events.



DIRECTORS' PROJECTS Cayuga Medical Associates (Fall 2021)



CMA is contemplating a comprehensive space plan that allows multiple CMA practices to function in the same clinic space: Dermatology, Gastroenterology, Endocrinology, and Rheumatology. To accomplish this, they needed both programming and design services. CIHF Director, Mardelle Shepley and HCD faculty member Nooshin Ahmadi agreed to collaborate by having DEA 3590/6500 (Ahmadi) do the design programming and then hand off the resulting brief for students in DEA 5305 (Shepley). The latter course is available to students seeking the minor in Healthy Futures. The programming class provided six alternative briefs including introduction and background of the facility, defining problem statements, and recommendations. The design studio provided six design options in addition to an analysis of the site. These options included conceptual floor plans and renderings as well as annotated drawings reflecting design research. Documenting this project via a video was supported by a Engaged Cornell Advancement Grant.

Sprout City Farms and Loaves & Fishes Community Engagement (Spring and Fall 2021)

As part of the community engaged service learning projects in HADM 4315 Nonprofit Social Enterprise and Food Justice, CIHF Associate Director Heather Kolakowski collaborated with Stefan Karg, Program Manager, and Meg Caley, Co-Founder and Executive Director for Sprout City Farms in Denver, Colorado to provide students with the opportunity to remotely explore community engagement activities and research around strategic planning for the



educational urban farm. Student teams researched and prepared executive reports and formal presentations on a variety of topics: restaurant partnership exploration, community navigator best practices, incubator farms and agrivoltaics best practices, outreach strategies for community engagement and social media best practices. In addition, other students in the class collaborated with Reverend Christina Culver, Executive Director for Loaves & Fishes, Ithaca, New York to explore strategic opportunities for the 37 year old Christian ministry providing a place for free meals, hospitality, companionship and advocacy for those in need. Student identified research opportunities around hospitality training, rural outreach through mobile food trucks, establishing authentic partnerships and creation of a new community space.

CELEBRATING 5 YEARS OF CIHF:

REFLECTIONS ON THE EVOLVING LANDSCAPE OF HEALTH, HOSPITALITY, AND DESIGN



On October 29, 2021 the Cornell Institute for Healthy Futures hosted a webinar discussion featuring past and current CIHF directors on what has changed since the inception of the Institute, and what continues to evolve. Each presenter explained how their own teaching and research has changed as a result of engaging with CIHF. After each director presented, the 3 pillars of our strategic plan, Engage, Inspire, and Innovate were presented. The webinar ended with each director discussing what they envision for CIHF in the next 5 years.

Presenters: *Mardelle Shepley (Executive Director), Heather Kolakowski (Associate Director), Brooke Hollis (Co-founder & Executive Director Emeritus), Rohit Verma (Co-founder & Executive Director Emeritus), & Nicolas Ziebarth (Associate Director)*

FACULTY FELLOWS FALL 2021 RECEPTION

CIHF Faculty Fellows
FALL GET-TOGETHER

Please join us!
Tuesday, October 5th
5:00pm - 6:00pm
Tent in front of MVR

*Individually packaged food
and beverages will be
provided*

Faculty Fellows of the Cornell Institute for Healthy Futures, including our newest director – Nicolas Ziebarth, were welcomed back last fall with a small outdoor

SERVING SUSTAINABILITY:

BOOST YOUR PLANT-BASED CUISINE CONFIDENCE

In Fall 2021, CIHF sponsored a webinar that explored the rise of plant-based cuisine and how the hospitality business can meet growing demand. The session was offered through eCornell and was moderated by our Associate Director, Heather Kolakowski.



Katie Cantrell
Director of Corporate Outreach
Better Food Foundation

Meredith Marin
CEO and Founder
Vegan Hospitality

Dr. David Fechner
Postdoctoral Research Fellow
The University of Queensland

Topics:

- How shifting to a plant-focused diet helps achieve the United Nations' Sustainable Development Goals
- Reasons why consumers prefer ordering meat when dining out
- Simple, concrete strategies to enhance plant-based menus in a variety of foodservice environments
- Ways to confidently and creatively accommodate guests requesting vegan options

SPRING MINI-SYMPOSIUM



SPEAKERS

Hyesook Chung, PhD candidate,
Cornell Industrial Labor Relations
Management and staffing in fast
casual restaurants and scheduling
practices

Dr. Kristina Workman, Assistant
Professor of Management,
Cornell Nolan School of Hotel
Administration

Dr. Vince Slaugh, Assistant
Professor of Operations
Management, Cornell Nolan
School of Hotel Administration
*Achieving Consistency of Care
Through Fostering Decisions*

*The Spring
Mini-Symposium
focused on culture and
its impact on recruitment
and retention.*

*Insights from elite
hospitality companies
and professionals for
improving culture were
shared with members of
senior living, health, and
wellness organizations.*

SPRING ROUNDTABLE: WORKFORCE CHALLENGES IN STAFFING & ENGAGEMENT

The Spring Roundtable focused on culture, especially how senior living and other health and wellness organizations might be able to learn from hospitality organizations and individuals to improve recruitment and retention.

SPEAKERS

Know Your Numbers

Dr. Vince Slaugh, Assistant Professor of Operations Management, Cornell Nolan School of Hotel Administration and Ms. Denise Boudreau-Scott, President, Drive

The Service Profit Chain and The Employee Experience

Dr. Tashlin Lakhani, Assistant Professor of Management and Organizations, Cornell Nolan School of Hotel Administration and Ms. Cora Lee, Vice President of Human Resources - Business Dining and Healthcare Aramark



NIC CONFERENCES



Brooke Hollis attended the Fall 2021 and Spring 2022 NIC Conferences in Houston and Dallas, TX where he hosted receptions for students and friends of CIHF.



Senior housing and care leaders convened to explore new models of community and care, build strategic partnerships, and stay ahead of industry disruption, as they shape a new era. The NIC Conference attendees included national and regional capital providers; senior care, skilled nursing and post-acute care operators; and healthcare partners.



INSPIRE



MINOR HEALTHY FUTURES

Our goal is to ignite students' and community members' passion for health, hospitality, and design to share knowledge and find solutions within the three fields. CIHF helps develop transdisciplinary educational programs, like our Healthy Futures minor, and provides support to instructors teaching courses offered by Cornell University related to the institute's mission.

The Cornell Institute for Healthy Futures and the Department of Human Centered Design (formerly the Department of Design + Environmental Analysis) offers a minor in Healthy Futures open to all undergraduate students. This innovative transdisciplinary focus — the first of its kind — has the potential to change industry practices and professional attitudes by breaking down the silos that often undermine creative solutions. This minor is of interest to students enrolled in health, wellness, policy, and hospitality related majors, as well as students interested in applying their education to problem-solving in population health and wellness.



Congratulations Peyton Fort! 2022 Healthy Futures Minor



Peyton is graduating with a BS in Global and Public Health Sciences, and minors in Healthy Futures and Inequality Studies. This summer, she will be interning with University of Colorado Health as a Design & Strategy Administrative Intern. In the fall, she'll return to Ithaca to complete her second year as a 5-year BS/MHA student in Cornell's Sloan Program in Healthcare Administration

IN-PROCESS HF MINORS

• • • • •	• • • • •
• Madelyn Hill • •	• • Madeline Lei • •
• Nolan School of Hotel Administration • •	• • College of Human Ecology • •
• 2024 • •	• • 2023 • •
• • • • •	• • • • •
• Elizabeth Madamidola • •	• • Isabella Suffredini • •
• College of Human Ecology • •	• • Nolan School of Hotel Administration • •
• 2023 • •	• • 2025 • •
• • • • •	• • • • •

CUHF

CORNELL UNIVERSITY HEALTHY FUTURES
STUDENT ORGANIZATION



Cornell University Health Futures: Undergraduate Chapter (CUHF) is the undergraduate student division of the Cornell Institute for Healthy Futures, the first academic institute in the country to combine hospitality, environmental design, and health policy & management to improve patient and customer experience. CUHF promotes careers, research, and extracurricular activities at the intersection of hospitality, health, and design. The purpose of this club is to engage students throughout multiple colleges, including the School of Hotel Administration and the College of Human Ecology, in conversation and professional development. We strive to create a collaborative environment and community for students interested in this intersectional field, and look forward to weekly discussions, networking with leaders in the industry, seminars and guest speakers, graduate panels, professional development, and industry education this semester.



CIHF SPRING SEMINAR & GUEST SPEAKERS

Health, Hospitality, and Design Industry Seminar HADM/DEA 3033/6055

This 1 credit-hour speaker series provides a unique opportunity for students to learn from leaders with proven success in an emerging industry that combines hospitality and design with health, wellness, and senior living. Students in this course have an unparalleled opportunity to gain insights from senior executives as they share their views on business, management, career, and other critical industry-related issues. As part of the course, students are able to meet in small groups with individual speakers. There is considerable demand for college graduates who understand the complexities of the health, hospitality and design industries and this core course provides a unique educational experience.

••••• 2022 SPEAKERS •••••

- *Esther Greenhouse*
- *Dave Deining*
- *Anne Wilkinson*
- *Sarah Johnson Dwyer*
- *Michael Schonbrun*
- *Trip Riggs*
- *Kati Peditto (pictured)*
- *Ruth Browne*
- *Sue Edinger*
- *Meryl Eriksen*
- *Tim McCarthy*



THANK YOU TO OUR 2022 SPEAKERS!

WINTER COURSE: DEA 1110 *MAKING A DIFFERENCE BY DESIGN*

This course provided a broad overview of design applied to various disciplines, and scales. The content allowed students to reflect on how design can offer an alternative and often more human-centered perspective towards solving the problems around us. With a focus on designing with a human-centered mindset while acknowledging the role of technology, we examined developments in wearable computing, virtual and tangible interfaces, social systems, robotics and biology. We applied the lens of design to issues on sustainability, healthy environments, diversity and inclusion, and designing for social good. Each week, through case studies and familiar examples, DEA 1110 explored how design is a critical consideration in every discipline.



SUMMER COURSE: DEA 1112 *CHANGE-MAKING: DESIGNING HEALTHY AND HOSPITABLE ENVIRONMENTS*

Designing Human-Centered, Healthy and Hospitable Environments was a three-week course that examined design innovations and some impacts on management/operations in hospitality, communication, business, healthcare, and senior housing. During this course students learned how design impacts organizations and every aspect of daily life. Using case studies, familiar examples, and interactions with a variety of leaders from design, healthcare and hospitality fields, students engaged with design thinking and explored new career pathways.

CIHF STUDENT PHOTO COMPETITION: *IMAGES OF RECOVERY*



First Place (top left): “Evening Song” submitted by Kunpeng Huang

Second Place, tie (bottom left): “Change Doesn’t Mean Bad” submitted by Natalie Brunco

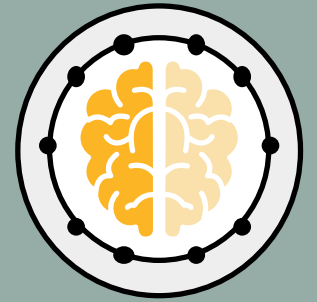
Second Place, tie (right): “Lakeside Afternoon” submitted by Jacky Lin

1st Place \$300 - 2nd Place tie \$150 each

CIHF held its 5th annual photography competition, which was open to all Cornell University students. After experiencing the COVID-19 pandemic, students were asked to capture images that convey a sense of recovery in the context of health, hospitality, and/or design.

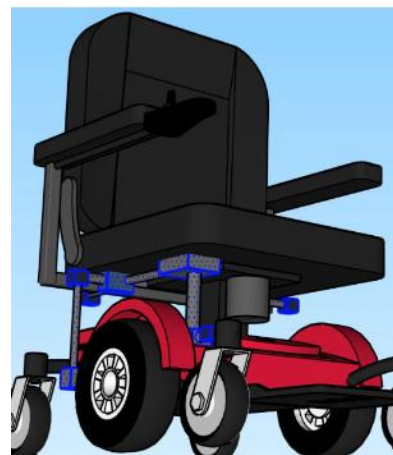
SPRING 2022 STUDENT COMPETITION SAFETY BY DESIGN CHARRETTE

INNOVATE



The objects and spaces we encounter in day-to-day life may result in unexpected injuries. In workplaces the primary causes of injury are materials handling; slips, trips and falls; being struck by or colliding with an object or incidents involving tools. In homes, injuries caused by falls down stairs; fires from appliances; and scald burns result in emergency department visits and deaths that could have been prevented with more thoughtful design. The goal of this competition was to design a set of objects/products, a space, a building, or urban environment that incorporates features that support human safety and address an injury risk. Students from both Cornell and Johns Hopkins were asked to design a set of objects/products, a space, a building or an urban environment that incorporated features that support human safety and address an injury risk.

During the 2021-22 academic year, CIHF supported the Health Design Innovations Lab (HDIL) through seed grants and helped to facilitate collaborative research. HDIL is a multidisciplinary community of faculty, students, and community members committed to cutting-edge research on improving healthcare environments. HDIL research focuses on approaches to the planning, design, and management of settings in order to promote human health and well-being. A recent HDIL-led research project is the Home Opioid Prescription Education and Smart Storage (HOPES), which seeks to support older adults living alone and diagnosed with mild dementia to take critical medications safely using pill organizers.



1ST PLACE
\$5000

Kitchen Design
(pictured)

Sydney Lonker (CU)
Jason Heller (CU)
Daniel Sohayegh (CU)
Rebeca Aro (CU)

2ND PLACE
\$3000

Wheelchair Design

Cali Wilson (JHU)
Renee Liu (JHU)
Shalika Subramanian (JHU)

3RD PLACE
\$1000

Modular Toilet Design

Kristina Im (CU)
Lily Stern (CU)
Debbie Jung (CU)
Jennifer Tan (JHU)



HIDL director, Rana Zadeh, on right

WE TRULY ENJOYED WITNESSING THE CREATIVITY OF THE CORNELL AND JOHNS HOPKINS STUDENT COMMUNITIES!

DIRECTOR PUBLICATIONS

- Arni, P., Dragone, D., Goette, L. and N. R Ziebarth 2021: “Biased Health Perceptions and Risky Health Behaviors,” *Journal of Health Economics*, 76: 102425.
- Hu, L. & Shepley, M. 2022. Design meets neuroscience: A preliminary review of design research using neuroscience tools. *Journal of Interior Design*.
- Jelliffe, E., Pangburn, P., Pichler, S. and N. R. Ziebarth. 2021: “Awareness and Use of (Emergency) Sick Leave: US employees’ Unaddressed Sick Leave Needs in a Global Pandemic,” *Proceedings of the National Academy of Sciences*, 118 (29): e2107670118.
- Kapadia, S. N.; Griffin, J. L.; Waldman, J.; Ziebarth, N. R.; Schackman, B. R.; and C. N Behrends. 2022: “The Experience of Implementing a Low-Threshold Buprenorphine Treatment Program in a Non-Urban Medical Practice,” *Substance Use & Misuse*, forthcoming.
- Kapadia, S. N.; Griffin, J. L.; Waldman, J.; Ziebarth, N. R.; Schackman, B. R.; and C. N Behrends. 2022: “A Harm-Reduction Approach to Treating Opioid Use Disorder in an Independent Primary Care Practice,” *Journal of General Internal Medicine*, forthcoming
- Kolakowski, H., Shepley, M., Valenzuela-Mendoza, E., & Zeibarth, N., (2021). How The COVID-19 Pandemic Will Change Workplaces, Healthcare Markets and Healthy Living: An Overview and Assessment. *Sustainability*, 13. <https://doi.org/10.3390/su131810096>
- Lee, J. & Shepley, M. (in press). Architecture student and faculty understanding of evidence-based design and environmental psychology in Korea. *Proceedings of the Environmental Design Research Annual Conference*.
- **Lee, J., Shepley, M.M. & Choi, J. 2021. Analysis of professionals and general public’s perceptions of passive house in Korea: Needs assessment for energy efficiency and indoor environmental quality improvement. *Sustainability*.
- Marcus, J., Siedler, T. and N.R. Ziebarth 2022: “The Long-Run Effects of Subsidized Sports Club Memberships for Children on Take-Up and Physical Activity,” *American Economic Journal: Economic Policy*, forthcoming.

- Nie, P., Wang, L., Dragone, D., Lu, H., Sousa-Poza, A., and N. R. Ziebarth. 2022: “The Better You Feel, the Harder You Fall:’ Health Perception Biases and Mental Health among Chinese Adults During the COVID-19 Pandemic,” *China Economic Review*, 71: 101708.
- Neo, J., Shepley, M. (2021). Using virtual reality to systematically examine impacts of noise and visual clutter on message elaboration and cognitive capacity. *Cyberpsychology, Behavior, and Social Networking*.
- Neo, J.R., Shepley, M.M. & Niederdeppe, J. 2021. Does Message Content Interact with the Physical Environment? An Exploratory Study on the Influence of Noise and Noise-Related Visual Cues on Message Elaboration. *Journal of Environmental Psychology* 76. <https://doi.org/10.1016/j.jenvp.2021.101657>
- *Neo, J.R., Won, A.S. & Shepley, M.M. 2021. Designing Immersive Virtual Environments for Human Behavior Research, *Frontiers in Virtual Reality*.
- Pichler, S., Wen, K. and N. R. Ziebarth. (2021: “Positive Health Externalities of Mandating Paid Sick Leave,” *Journal of Policy Analysis and Management*, 40(3): 715-743.
- Shepley, M., Peditto, K., Mehrabyan, M., & Sachs, N. (in press). The Role of Salutogenic Design in Mental and Medical Health-Integrated University Clinics. In A. Dilani, T. Capon, & A. Heshmati (Eds.). *Ecological and Salutogenic Design for Sustainable Global Healthy Society*, Newcastle upon Tyne, UK: Cambridge Scholars Publishing.
- Shepley, M., Savage, T. & Smith, J. (in press). Reimagining Workshops. *Health Environments Research and Design*.
- Shepley, M., Kolakowski, H., Ziebarth, N., Mendoza-Valenzuela, E. 2021. How COVID will change health, hospitality and senior facility design. *Frontiers*, 7. [Doi.org/10.3389/fbuil.2021.74090](https://doi.org/10.3389/fbuil.2021.74090)
- *Shepley, M., Peditto, K. Sachs, N., Pjam, Y Barankevicj, R., Crouppen, G., & Dresser. (2021) Staff and resident perceptions of mental and behavioural health environments, *Building Research & Information*, DOI: 10.1080/09613218.2021.1963653. 50th anniversary issue on Health and Wellness.
- Werbeck, A.; Wübker, A., and N. R Ziebarth. 2021: “Cream-Skimming by Health Care Providers and Inequality in Health Care Access: Evidence from a Randomized Field Experiment,” *Journal of Economic Behavior & Organization*, 188, 1325-1350.
- *Zhu, X. & Shepley, M. (in press). Assessing preferences and perceived restorative qualities of break spaces for nurses in China. *Health Environments Research and Design*.

REPRESENTATIVE FELLOW PUBLICATIONS

- Avery, Rosemary J., John Cawley, Julia Eddelbuettel, Matthew Eisenberg, Charlie Mann, Alan D. Mathios. Forthcoming, 2022. "Consumer Responses to Firms' Voluntary Disclosure of Information: Evidence from Calorie Labeling by Starbucks." *American Journal of Health Economics*.
- Avery, Rosemary, John Cawley, Matthew D. Eisenberg, Alan Mathios, and Craig S. Schulman. 2022. "Does Industry Self-Regulation Restrict Advertising? Evidence from the Children's Food & Beverage Advertising Initiative." *Obesity*, 30(4): 864-868.
- Biswas, Abhijeet, and Rohit Kumar Verma. "Augmenting Service Quality Dimensions: Mediation of Image in the Indian Restaurant Industry." *Journal of Foodservice Business Research* 0, no. 0 (January 16, 2022): 1-32. <https://doi.org/10.1080/15378020.2022.2027198>.
- Cawley, John, Michael Daly, and Rebecca Thornton. 2022. "The Effect of Beverage Taxes on Youth Consumption and BMI: Evidence from Mauritius." *Health Economics*, 31(6): 1033-1045.
- Cawley, John, David Frisvold, David Jones, and Chelsea Lensing. 2021. "The Pass-Through of a Tax on Sugar-Sweetened Beverages in Boulder, Colorado." *American Journal of Agricultural Economics*, 103(3): 987-1005.
- Cawley, John, Alex Susskind, and Barton Willage. 2021. "Does Information Disclosure Improve Consumer Knowledge? Evidence from a Randomized Experiment of Restaurant Menu Calorie Labels." *American Journal of Health Economics*. 7(4): 427-456.
- Ernst, M., Werner, A. M., Niederer, D., Czaja, S. J., Mikton, C., Ong, A. D., Rose, T., Brähler, E., & Beutel, M. E. (in press). Loneliness before and after the outbreak of the COVID-19 pandemic: A systematic review with meta-analysis. *American Psychologist*.
- Falkowski T.B., Jorgensen B., Rakow D.A., Das A., Diemont S.A.W., Selfa T. and Arrington A. 2022. "Connecting With Good People and Good Plants": Community Gardener Experiences in New York State During the COVID-19 Pandemic. *Frontiers in Sustainable Food Systems* 6:854374. doi: 10.3389/fsufs.2022.854374
- Gerdes, M. E., Aistis, L. A., Sachs, N. A., Williams, M., Roberts, J. D., & Rosenberg Goldstein, R. E. (2022). Reducing Anxiety with Nature and Gardening (RANG): Evaluating the Impacts of Gardening and Outdoor Activities on Anxiety among US Adults during the COVID-19 Pandemic. *International Journal of Environmental Research and Public Health*, 19(9), 5121.
- Goel, Manoj Kumar, Ajay Kumar, Gargi Maitra, and R. K. Verma. "First Report of Trans-Mediastinal Perforation of Bilateral Main Bronchi by a Self-Expandable Metallic Stent." *Lung India* 39, no. 2 (April 2022): 201-2. https://doi.org/10.4103/lungindia.lungindia_720_21.

- Goodale, John C., Rohit Verma, and Madeleine E. Pullman. "A Market Utility-Based Model for Capacity Scheduling in Mass Services." *Production and Operations Management* 12, no. 2 (January 5, 2009): 165-85. <https://doi.org/10.1111/j.1937-5956.2003.tb00499.x>.
- Ibes, Dorothy C., Donald A. Rakow, and Chris H. Kim. 2021. "Barriers to Nature Engagement for Youth of Color." *Children, Youth, and Environments*. 31(3): 49-73.
- Ibes, D. C., Rakow, D. A., & Kim, C. H. (2021). Barriers to Nature Engagement for Youth of Color. *Children, Youth and Environments*, 31(3), 49-73.
- Lee, Jungwoo, Bo Edvardsson, and Rohit Verma. "Developing a Strategic Viability-Fit Model of Mobile Technology Adoption in Hotels." *Journal of Hospitality and Tourism Technology*, 2022.
- Kiers, A. Haven, Donald A. Rakow, Stacey Parker & Carolyn S. Dewa. 2021. "A pilot study on the potential for formalized nature-based instruction to mitigate stress and increase social bonds in university students." *Journal of American College Health*. DOI: 10.1080/07448481.2021.1943412
- Kong, Lu, Hessam Sadatsafavi, and Rohit Verma. "Effective Service Operations Management: Aligning Priorities in Healthcare Operations with Customer Preferences." In *The Palgrave Handbook of Service Management*, edited by Bo Edvardsson and Bård Tronvoll, 801-22. Cham: Springer International Publishing, 2022. https://doi.org/10.1007/978-3-030-91828-6_38.
- Kong, Lu, Kejia Hu, and Rohit Verma. "Service Chains' Operational Strategies: Standardization or Customization? Evidence from the Nursing Home Industry." *Manufacturing & Service Operations Management*, 2022.
- Loebach, Janet, Donald A. Rakow, Genevieve Meredith, Mardelle Shelpley. 2022. "Time outdoors in nature to improve staff well-being: Examining changes in behaviors and motivations among university staff in the use of natural outdoor environments since the emergence of the COVID-19 pandemic." *Frontiers in Psychology*
- Ong, A. D. , & Leger, K. (in press). Advancing the study of resilience to daily stressors. *Perspectives on Psychological Science*.
- Ong, A. D., Urganci, B., Burrow, A. L., & DeHart, T. (in press). The relational wear and tear of everyday racism among African American couples. *Psychological Science*.
- Ong, A. D. 2021. Racial incivility and in everyday life: A conceptual framework for linking process, person, and context. *Perspectives on Psychological Science*, 16, 1060-1074.
- Sachs, N. A. (2021). Design for Happiness in Healthcare: Is it Possible? Necessary? Wise?. *HERD: Health Environments Research & Design Journal*, 14(4), 457-462.
- Strong, Alexis Palmer, and Rohit Verma. "Healing the Whole Human: Redefining Health and Understanding the Health Consumer." *Patient Experience RX: Relationship-Centered Care (RCC) for High-Value Health System*, 2021, 53.
- Zhong, Lina, Rohit Verma, Wenqi Wei, Alastair M. Morrision, and Liyu Yang. "Multi-Stakeholder Perspectives on the Impacts of Service Robots in Urban Hotel Rooms." *Technology in Society* 68 (February 1, 2022): 101846. <https://doi.org/10.1016/j.techsoc.2021.101846>.

HEALTH DESIGN INNOVATIONS LAB

HDIL 2021-22 PUBLICATIONS

Health Design Innovations Lab (HDIL) is a multidisciplinary community of faculty, students, practitioners, and community members committed to cutting-edge research on healthcare environments. HDIL is part of the Department of Human Centered Design (formerly DEA, Design and Environmental Analysis) in the College of Human Ecology and is affiliated with the Cornell Institute for Healthy Futures. HDIL members engage in applied research collaborating with industry and community members in national and international projects. Their research projects focus on approaches to the planning, design, and management of settings that promote human health and well-being.

- Rana Sagha Zadeh, M.Arch., Ph.D., Associate AIA, LEED AP, EDAC, is an assistant professor and the co-director of the Health Design Innovations Lab.
- HDIL is currently working on several projects about improving patients' quality of life, managing symptoms, optimizing built work environments, and assessing the life-cycle costs and the business case for design interventions that target improving human health and performance.



- Capezuti, E., Zadeh, R. S., Brigham, M. A., Dias, B. A., Kim, B. C., Lengetti, E., Krieger, A. C. (In press). Development and palliative care staff reactions to a sleep regulation educational intervention. *BMC Palliative Care*, 21(1), 12. doi:10.1186/s12904-022-00902-x
- **List of Co-Authors: Elizabeth Capezuti, Rana Sagha Zadeh, Michael Ames Brigham, Brooke Ana Dias, Benjamin Chanhee Kim, Evie Lengetti, Belle Erikson, Nancy Swezey, Ana C. Krieger
- Charles, S. Röcke, C., Scholz, U, Sagha Zadeh, R. 2021. "The Importance of Person and Environment Interactions in Daily Life for Healthy Aging." Manuscript prepared for a special issue on motivation and healthy aging in *Journals of Gerontology, Series B: Psychological Sciences and Social Sciences*.
- **List of Co-Authors: Susan T. Charles, Christina Röcke, Rana Sagha Zadeh, Urte Scholz
- Sagha Zadeh, R. Khanna, J. 2022. User centered approach for designing movement and memory care clinic: A Multidisciplinary Systems Approach. Submitted to Tompkins and Cortland County network of providers. Submitted to Weill Cornell Medical College Department of Neurology.
- **List of Co-Authors: Rana Sagha Zadeh, J. Khanna
- World Health, Organization [WHO]. Jan 2021. Decade of healthy ageing: baseline report. Geneva: World Health Organization. ISBN: 9789240017900. <https://www.who.int/publications/i/item/9789240017900>
- **List of Co-Authors: Ritu Sadana, Ana Posarac, Anshu Banerjee, David Bramley, Melissa Co, Elyse Couch, Hsin-yi Lee, Erica Lefstad, Dario Moreno-Agostino, Robert Moulder, Matthew Prina, Rana Sagha Zadeh, and Yu-Tzu Wu.
- Zacher, H., Sagha Zadeh, R., Heckhausen, J.& Oettingen, G. 2021. Promotion of Healthy Aging at Work: Desiderata for Future Research and Practice, Manuscript prepared for a special issue on motivation and healthy aging in *Journals of Gerontology, Series B: Psychological Sciences and Social Sciences*.
- **List of Co-Authors: Hannes Zacher, Rana Sagha Zadeh, Jutta Heckhausen, Gabriele Oettingen

HDIL 2021-22 PRESENTATIONS

- Cramer A, Zadeh R, Reid C, Wethington E, Czaja SJ, Capezuti E, Shields W. User Journey Mapping: a user-product interaction method to evaluate and inform solutions to improve medication adherence for older adults with dementia (accepted). The Environmental Design Research Association (EDRA); March 2022; Greenville SC.

• **List of Co-Authors: Anne Cramer, Rana Sagha Zadeh, Cary Reid, Elaine Wethington, Sara Czaja, Elizabeth Capezuti, Wendy Shields

- Sagha Zadeh, R. (2022, May). Bridging the gap from science to impact in healthy aging, University of British Columbia (UBC), Department of Family Practice, Faculty of Medicine, Vancouver, BC. Canada.

• **List of Co-Authors: Sagha Zadeh, R.

- Sagha Zadeh, R. (2022, April). Systems approach to innovations in health and healthcare, Department of Psychological Science, University of California Irvine (UCI), Irvine, CA.

• **List of Co-Authors: Sagha Zadeh, R.

- Sagha Zadeh, R. (2021, April). Palliative Care by Environmental Design: A systems approach to managing symptoms for advanced illness, Columbia University Medical Center, College of Physicians & Surgeons, Department of Medicine, Grand Rounds School of Medicine, New York, NY

• **List of Co-Authors: Sagha Zadeh, R.



FACULTY FELLOWS

The CIHF Faculty Fellows Program provides collaboration opportunities and support for invited Cornell University faculty for developing or enhancing research, curriculum, and industry-related activities that link hospitality, health, and design. CIHF Fellows form a diverse, yet cohesive, learning community and collectively create a strong multidisciplinary knowledge base.

COLLEGE OF HUMAN ECOLOGY



Laura Barre
Assistant Professor
Nutritional Sciences



Frank Becker
Professor
Human Centered Design



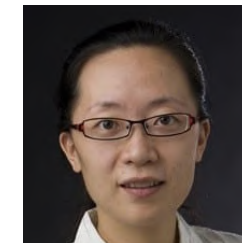
John Cawley
Professor
Policy Analysis & Management



Alan Hedge
Professor Emeritus
Human Centered Design



Brooke Hollis
Associate Director
Sloan Program in Health
Administration



Ying Hua
Associate Professor &
Director of Undergraduate
Studies



Saleh Kalantari
Assistant Professor
Human Centered Design



Joseph Laquatra
Professor
Human Centered Design



Beth McKinney
Lecturer
Division of Nutritional
Sciences



Sean Nicholson
Professor
Policy Analysis and
Management



Anthony Ong
Professor
Human Development



Karl Pillemer
Hazel E. Reed Professor
Human Development



Mardelle Shepley
Professor
Human Centered Design



So-Yeon Yoon
Associate Professor
Human Centered Design



Jay Yoon
Assistant Professor
Human Centered Design



Rana Sagha Zadeh
Assistant Professor
Human Centered Design



Nicolas Ziebarth
Associate Professor
Sloan, Policy Analysis & Management



Gary Thompson
Professor
Services Operations Management



Kate Walsh
Dean &
E.M. Statler Professor



Brad Wellstead
Lecturer
Operations, Technology, & Information Management



Kristina Workman
Assistant Professor
Management & Organizational Behavior

NOLAN SCHOOL OF HOTEL ADMINISTRATION

JOHNSON GRADUATE SCHOOL OF MANAGEMENT



Judi Brownell
Professor
Management & Organizational Behavior



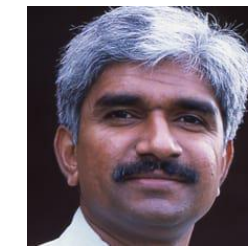
HaeEun Helen Chun
Assistant Professor
Services Marketing



Ravinder Kingra
Lecturer, Food & Beverage Management



Li Chen
Associate Professor,
Operations, Technology & Information Management



Nagesh Gavirneni
Associate Professor,
Operations, Technology & Info Management



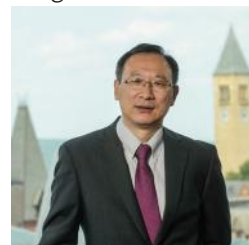
Shawn Mankad
Assistant Professor,
Operations, Technology and Information Management



Heather Kolakowski
Lecturer, Food & Beverage Management



Robert Kwortnik
Associate Professor
Service Marketing



Peng Liu
Distinguished Professor
in Asian Hospitality Management



Peggy Odom-Reed
Associate Professor
Service Marketing



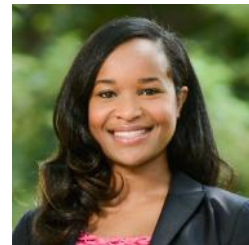
Elizabeth Mannix
Associate Dean for
Executive MBA



Larry Robinson
Professor, Operations,
Technology & Information Management



Sunita Sah
Assistant Professor
Management & Organization



Jamie Perry
Assistant Professor,
Employment Relations & Human Resources & Law



Tony Simons
Associate Professor,
Management & Organizational Behavior



Vince Slaugh
Assistant Professor
Operations Management & Information Systems



Alex Susskind
Associate Professor,
Food & Beverage Management



THE DYSON SCHOOL OF APPLIED ECONOMICS & MANAGEMENT



Anke Wassel
Lecturer
Executive Director of the
Center for Transformative
Action

COLLEGE OF AGRICULTURE & LIFE SCIENCES



Donald A. Rakow
Associate Professor
Section of Horticulture
School of Integrative Plant Science

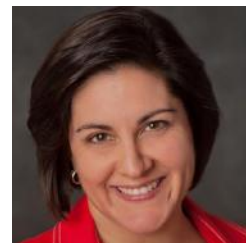


Malte Ziewitz
Assistant Professor
Science & Technology Studies

SCHOOL OF INDUSTRIAL & LABOR RELATIONS



Susanne M. Bruyère
Professor, Disability Studies



Diane Burton
Professor & Department Chair
Human Resource Studies



LaWanda Cook
Extension Associate
Yang-Tan Institute SUBD

ACADEMIC SCHOLARS

The CIHF Academic Scholars are faculty members at universities other than Cornell University who collaborate in research projects, educational activities or industry events that link hospitality, health, and design.



Tor Wallin Andreassen
Professor of Marketing
NHH Norwegian School of
Economics.



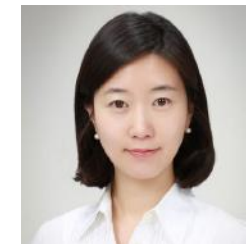
Sue Baker
Professor Emeritus
Johns Hopkins Bloomberg
School of Public Health



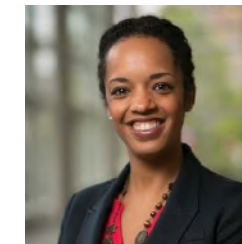
Aravind Chandrasekaran
Associate Professor
Management Sciences
The Ohio State University



Sunmee Choi
Professor
School of Business
Yonsei University



Kyunghwa Chung
Lecturer, Department of
Fashion Design
Chung-Ang University



Stephanie J. Creary
Assistant Professor of
Management
Wharton School of the
University of Pennsylvania



Xin (David) Ding
Associate Professor of
Project and Supply Chain
Management
Black School of Business,
Penn State Behrend



David Dobrzykowski
Associate Professor,
Department of Supply Chain
Management
University of Arkansas



Marian Gryzlo
Director of Corporate &
Strategic Partnerships
Ronald McDonald House NY



Bo Edvardsson
Professor and Vice Rector
Karlstad University



Marie Elf
Associate Professor, Nursing
& Architecture
Dalarna University &
Chalmers University of
Technology



Mariana G. Figueiro
Professor
Rensselaer Polytechnic
Institute



Craig Froehle
 Professor, Business Analytics
 & Information Systems
 Carl H. Lindner College
 of Business, University of
 Cincinnati



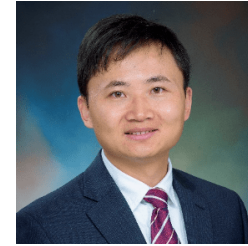
Andrew S. Gallan
 Associate Professor,
 Marketing
 Kellstadt Graduate College
 of Business at DePaul
 University



Brian J. Galli
 Assistant Professor,
 Project Management and
 Management Engineering
 Long Island University



Susan Goldstein
 Associate Professor, Supply
 Chain & Operations
 Carlson School of
 Management, University of
 Minnesota



Huiwen Xu
 Assistant Professor
 School of Public and
 Population Health, and Sealy
 Center on Aging



Douglas Morrice
 Professorship in Business
 McCombs School of
 Business The University of
 Texas at Austin



Pedro Oliveira
 Associate Professor of
 Operations, Technology and
 Innovation Management
 Copenhagen Business
 School



Lia Patrício
 Assistant Professor of
 Operations Management
 School of Engineering of the
 University of Porto



**Anders
 Gustafsson**
 Professor, Business
 Administration
 Service Research Center,
 Karlstad University



Wafa Hammedi
 Associate Professor, Service
 Innovation & Marketing
 Service Research Center,
 University of Namur



**HyunJeong
 "Spring" Han**
 Assistant Professor,
 Project Management and
 Management Engineering
 Emlyon Business School



Janelle Heineke
 Professor & Chair of
 Operations and Technology
 Management
 Questrom School of
 Business, Boston University



Aleda Roth
 Distinguished Professor,
 Supply Chain Management
 Clemson University, College
 of Business and Behavioral
 Science



Naomi Sachs
 Assistant Professor
 Plant Science and
 Landscape Architecture,
 University of Maryland



**Warren S.
 Sandberg**
 Professor of Anesthesiology,
 Surgery, and Biomedical
 Informatics
 Vanderbilt University



Glen Schmidt
 David Eccles Professor of
 Business/Professor, OIS
 University of Utah



Kejia Hu
 Assistant Professor of
 Operations Management
 Service Research Center,
 Vanderbilt University



**Philippa Hunter-
 Jones**
 Professor of Marketing
 University of Liverpool
 Management School



Jay Kandampully
 Professor of Service
 Management, Department
 of Human Sciences
 Ohio State University



Byron Keating
 Professor of Management,
 Australian National
 University



Rachna Shah
 Associate Professor, Supply
 Chain and Operations
 Carlson School of
 Management, University of
 Minnesota



Lina Song
 Assistant Professor of
 Operations and Technology
 University College London
 School of Management



**Courtney Suess-
 Raeisinafchi**
 Assistant Professor
 Texas A & M University



**Subhashree
 (Sue) Sundar**
 Associate Professor Director
 Operations & Supply Chain
 Program
 University of Utah



**Catharina von
 Koskull**
 Associate Professor,
 Department of Marketing
 University of Vaasa



Michael A Lewis
 Professor, Operations &
 Supply Management
 University of Bath School of
 Management



Susan F. Lu
 Associate Professor of
 Management
 Krannert School of
 Management, Purdue
 University



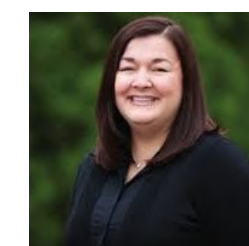
**Janet R. McColl-
 Kennedy**
 Professor, Marketing
 UQ Business School,
 University of Queensland



Vikram Tiwari
 Associate Professor,
 Anesthesiology &
 Biomedical Informatics and
 Director, Surgical Analytics
 Vanderbilt University
 Medical Center



Anita Tucker
 Professor, Operations and
 Technology Management
 Questrom School of
 Business
 Boston University



Liana Victorino
 Associate Professor
 Peter B. Gustavson School
 of Business, University of
 Victoria



**Matthew
 Walsman**
 Assistant Professor,
 Department of Supply Chain
 Management
 Rutgers Business School



Michele Williams
Assistant Professor
of Management and
Entrepreneurship
University of Iowa



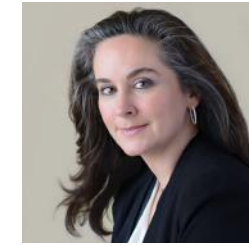
Jochen Wirtz
Professor Department of
Marketing
NUS Business School,
National University of
Singapore



Xiande Zhao
Professor of Operations and
Supply Chain Management
China-Europe International
Business School



Vaibhav Garg
Director of Talent & Culture
Accor



Esther Greenhouse
Environmental
Gerontologist
Silver to Gold Strategic
Consulting



Jill Guindon-Nasir
Senior Director, Global
Learning Solutions &
Organizational Development
Ritz-Carlton Leadership
Center



Asheesh Gupta
Co-Founder
Samarth Community

INDUSTRY SCHOLARS

The CIHF Industry Scholars are colleagues from non-educational organizations who collaborate in research projects, educational activities or industry events that link hospitality, health, and design.



Maggie Hsu
Business Development
AirSwap



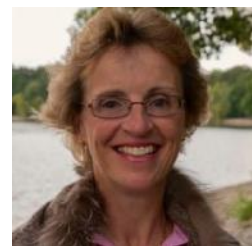
Zain Ismail
Principal Transformation
Consultant
Henry Ford Health System



Andrew Jenis
Vice President
US Acute Care Solutions



Judy Kaufman
Director of Patient
Relationship Management
Stanford Health Care
& Stanford University's
Office of Medical Center
Development



Kelly Abramson
Executive, International
Business Development
Penn Medicine



Anna Bjurstam
Vice President
Six Senses Spas



Denise Boudreau-Scott
President
Drive



Ruth Browne
President & CEO
Ronald-McDonald House NY



Robert G. Kramer
Founder and Strategic
Advisor
National Investment Center
for Seniors Housing & Care



Garima Goel Lal
Founder
Traffic Light Cook



Barbara Lang
Founder
B. Lang Consulting



Isaac Losh
Founder & Managing
Director
LE, LLC



Jessica Rose Cooper
Chief Commercial Officer
International WELL Building
Institute



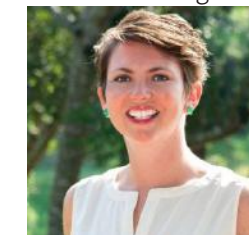
John DeHart
Co-Founder
Nurse Next Door



David Deininger
Architect and Healthcare
Facility Master Planning
Consultant
2dplanning



Srisatish Devapatla
Department of Pediatrics,
Neonatal-Perinatal Medicine
Cayuga Medical Center



Elizabeth Martyn
Principal
Sophos Hospitality Consulting



Catalina Hoffman Munoz-Seca
Founder and Chairman
Hoffman Group



Meredith Oppenheim
Founder
Vitality Society



Erin Peavey
Architect & Design
Researcher, Vice President
HKS, Inc.



John P. Rijos
Co-Founder & Operating Partner
Chicago Pacific Founders



Nancy M. Schlichting
Retired Chief Executive Officer
Henry Ford Health System



James F. Sherman
Senior Vice President
Dougherty Mortgage LLC



Suzanne Simonetta
Director of Policy, Legislation, and Regulations
U.S. Department of Labor



Quint Studer
Founder Studer Community Institute
Studer Community Institute



Joseph M. Tasse
Interim President and CEO
Trinity Health System



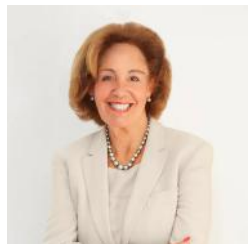
Sara Terry
Senior Vice President, Resident and Family Engagement
Brookdale Senior Living Inc.



Pelin Thorogood
President & Co-Founder
Wholistic Research and Education Foundation



Gerard van Grinsven
Founder, President & CEO
The Van Grinsven Hospitality Group



Elizabeth Weiner
Founder
Elizabeth Weiner Gallery Inc.



Mitchell Weisberg
Managing Director
Lumen Solutions, Inc.



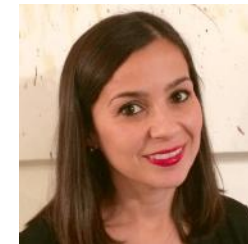
B.J. Wiley Williams
CEO & Founder
SoHookd



Jay Woolford
SVP-Development, CIRC Development, a Transforming Age Affiliate
Sustainable Housing for Ageless Generations

VISITING SCHOLARS

The CIHF Visiting Scholars are faculty members at universities other than Cornell University who have worked with CIHF to collaborate on research projects, educational activities or industry events that link hospitality, health, and design. CIHF welcomes Visiting Scholars who conduct research studies supported by the institute.



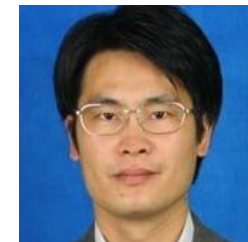
Alessandra Cappai
Ph.D., Urbanism
Former CIHF Visiting Scholar



Hae-Ryong Kim
Professor of Marketing
College of International Business, Division of Business & Economics, Konkuk University, GLOCAL Campus Chungju, Korea



Jiyoung Kim
Professional Lecturer of Marketing
School of Business, Yonsei University



Zongwei Li
Assistant Professor
Shanghai University of Science and Engineering



Marival Segarra-Oña
Associate Professor, Innovation & Competitiveness
Universidad Politécnica de Valencia



Lina Zhong
Assistant Professor, School of Tourism Management
Beijing International Studies University



THANK YOU TO ALL CIHF FELLOWS & SCHOLARS!

Become a fellow or scholar by emailing cihf@cornell.edu

NAMING & ENGAGEMENT OPPORTUNITIES

Founding Membership

Benefits include:

- All benefits associated with the Corporate Membership
- Recognition as founding member above regular members
- Priority consideration for speaking opportunities.
- Exclusive sponsorship of one of the following each year as founding member:
 - CIHF Roundtable
 - CIHF conference (Platinum sponsorship)

FOUNDING MEMBER

\$100,0000



GET INVOLVED WITH CIHF

CIHF is supported by a network of corporate members critical to the mission of integrating the fields of hospitality, health management/policy, and design thinking to enhance service excellence in healthcare, wellness, senior living, and related industries.

VOLUNTEER

*Volunteer as a guest lecturer in classes or as a panelist at CIHF events. Hospitality, Health, & Design Industry Seminar
DEA/HADM 3055 &
DEA/HADM 6055*

HOST INTERNS

Connect with highly-motivated students for employment & internship opportunities. All CIHF minors participate in a 100 hour internship during the course of their studies at Cornell

STAY IN TOUCH

*Join our email list to be notified of CIHF announcements and opportunities to participate in webinars and industry events. Sign up to receive the newsletter
online ihf.cornell.edu*

BECOME A BOARD MEMBER

*The board, composed of senior-level leaders in the industry, meets twice annually. Recognition as a partner of CIHF on our website, including your corporate logo, a link to your company's website, & the advisory board member's personal bio & photo.
The commitment is an individual gift of \$10,000 per year for 3 years.*



Cornell Institute for Healthy Futures
Cornell University - 3250 Martha Van Rensselaer Hall - Ithaca, NY 14853
Phone: 607.255.2428
CIHF@cornell.edu