

Dairy Market Watch: March 2026

Lainey Koval

Trends in component production

In March 2026, average producer receipts in the Northeast (NE) FMMO #1 averaged 4.48% butterfat, down from the month previous. The average across all U.S. orders also decreased, falling to 4.37%. Percent butterfat was up 2.3% year over year, while the U.S. average was up 0.9%. Percent protein in milk also decreased slightly in March, averaging 3.35% in the Northeast and 3.40% across all U.S. orders. Percent protein was up 2.1% year over year in the NE and up 1.2% on average across the U.S.

According to the Market Administrator, average producer butterfat and protein tests set new record highs for the month of March in the Northeast order.

CHART 1

**% Butterfat, Average Test of Producer Receipts
Northeast Order vs. US Average**

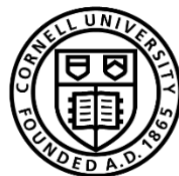
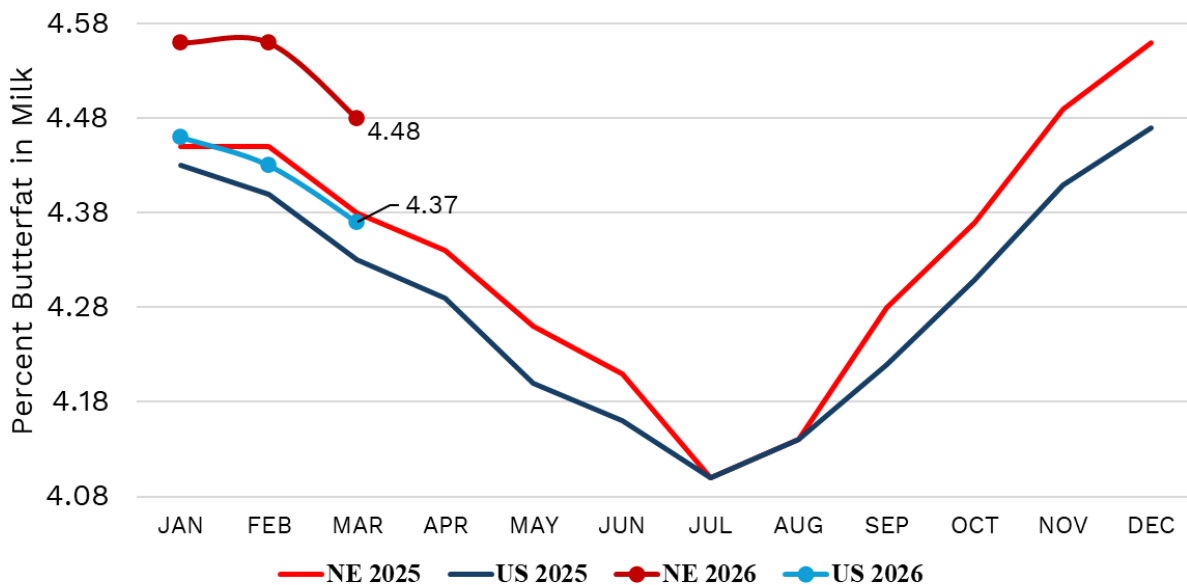
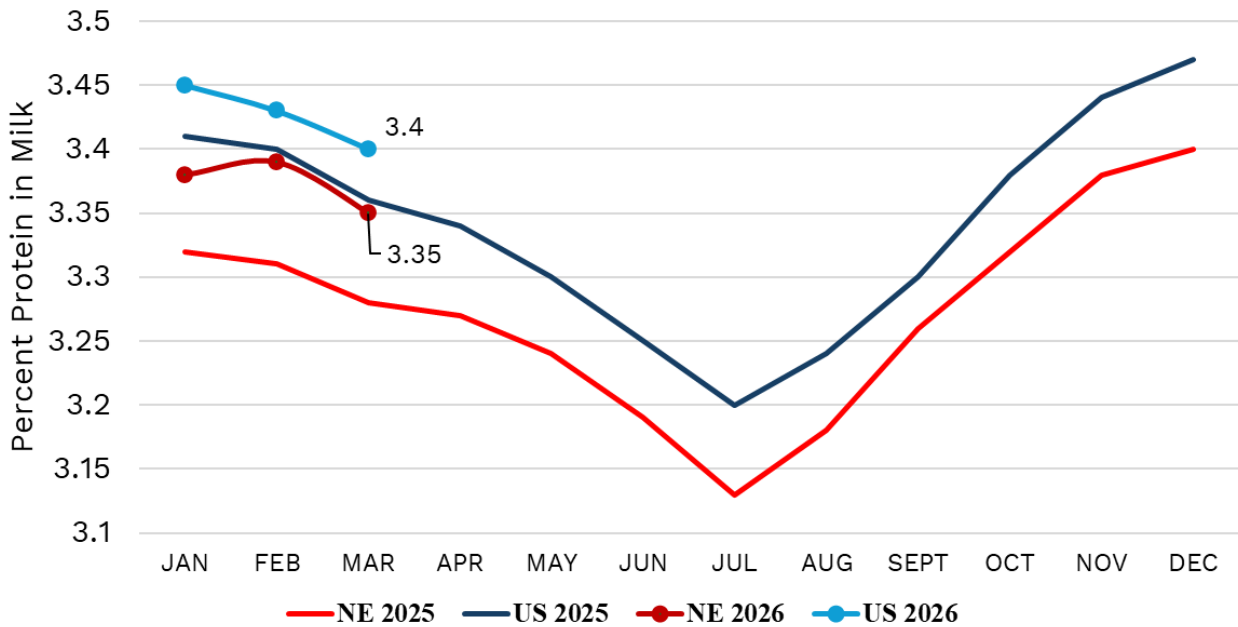


CHART 2

% Protein, Average Test of Producer Receipts Northeast Order vs. US Average



Trends in price and utilization

In March, the Statistical Uniform Price less PPD at average pool component levels increased to \$18.47 per cwt. in FMMO #1. Adding in PPD, which was \$2.66 at Suffolk County, MA, the SUP at average component levels was \$21.13. Looking at component prices, the butterfat price was \$2.02, a 24-cent increase from the month prior. The protein price was \$2.09, up 15 cents from February. PPD also increased, up 29 cents from the month prior.

Fluid milk utilization of pooled milk in FMMO #1 increased from the month prior for all classes and according to the Market Administrator, Class I utilization was the highest volume for the month of March in three years. Class II utilization was also the second largest volume in the history of the order. Looking at selected products, Class II products yogurt, cottage cheese, and ice cream saw year over year increases in utilization in the month of March.

CHART 3

Statistical Uniform Price less PPD

Northeast FMMO #1

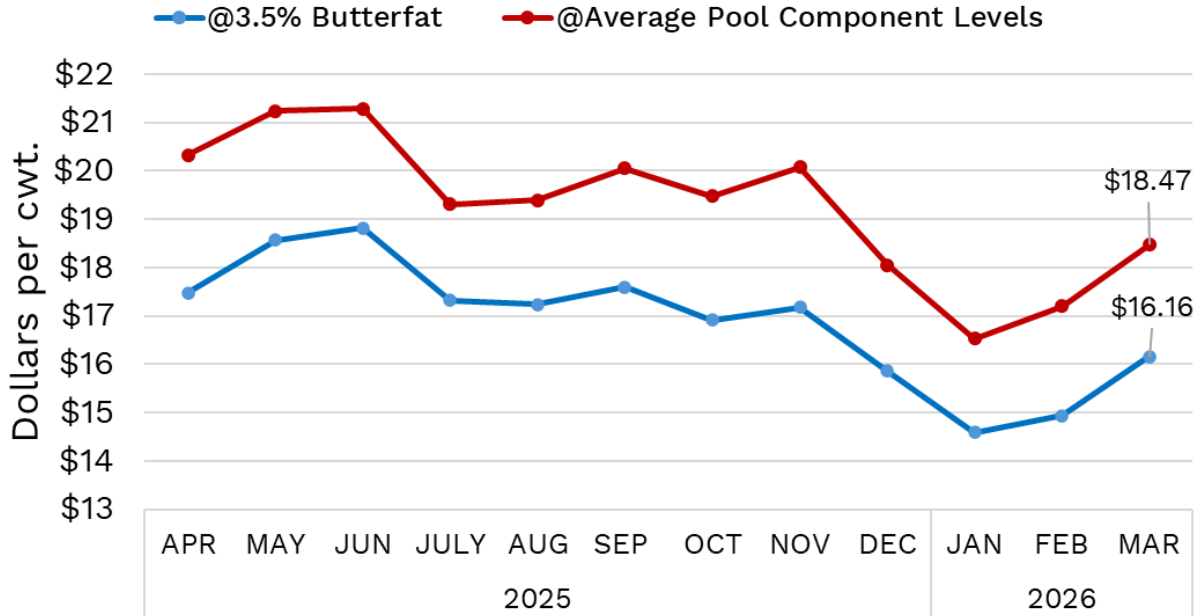


TABLE 1

Monthly Component Prices			
Dollars per lb.			
	BF	PRO	OS
APR	\$2.64	\$2.17	\$0.31
MAY	\$2.66	\$2.48	\$0.32
JUN	\$2.74	\$2.53	\$0.29
JULY	\$2.84	\$1.87	\$0.31
AUG	\$2.73	\$1.96	\$0.32
SEP	\$2.19	\$2.71	\$0.32
OCT	\$1.83	\$2.88	\$0.34
NOV	\$1.71	\$3.01	\$0.39
DEC	\$1.58	\$2.45	\$0.44
JAN	\$1.45	\$2.18	\$0.44
FEB	\$1.78	\$1.94	\$0.44
MAR	\$2.02	\$2.09	\$0.42

CHART 4

**Utilization by Class, Pounds of Pooled Milk
Northeast FMMO #1**

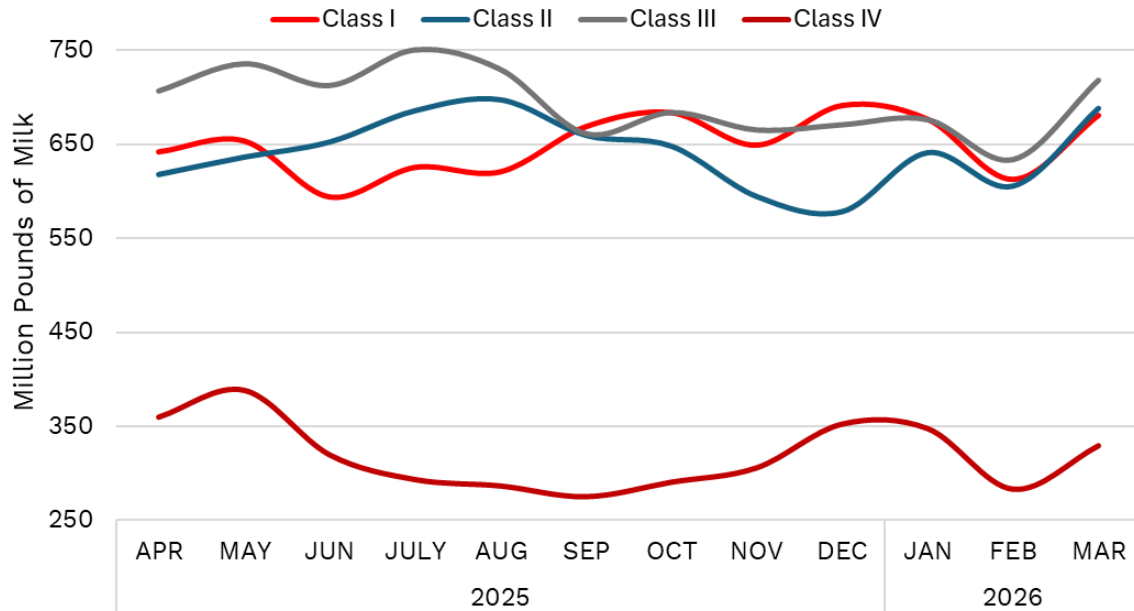
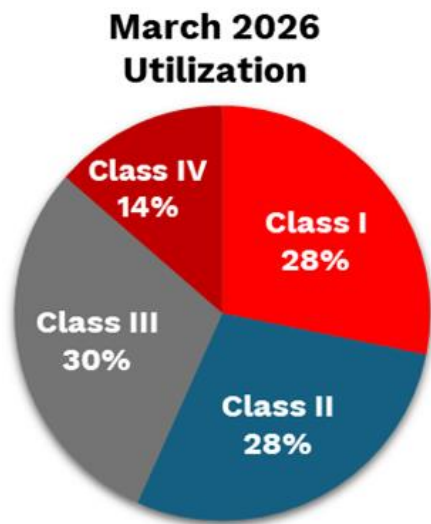


TABLE 2

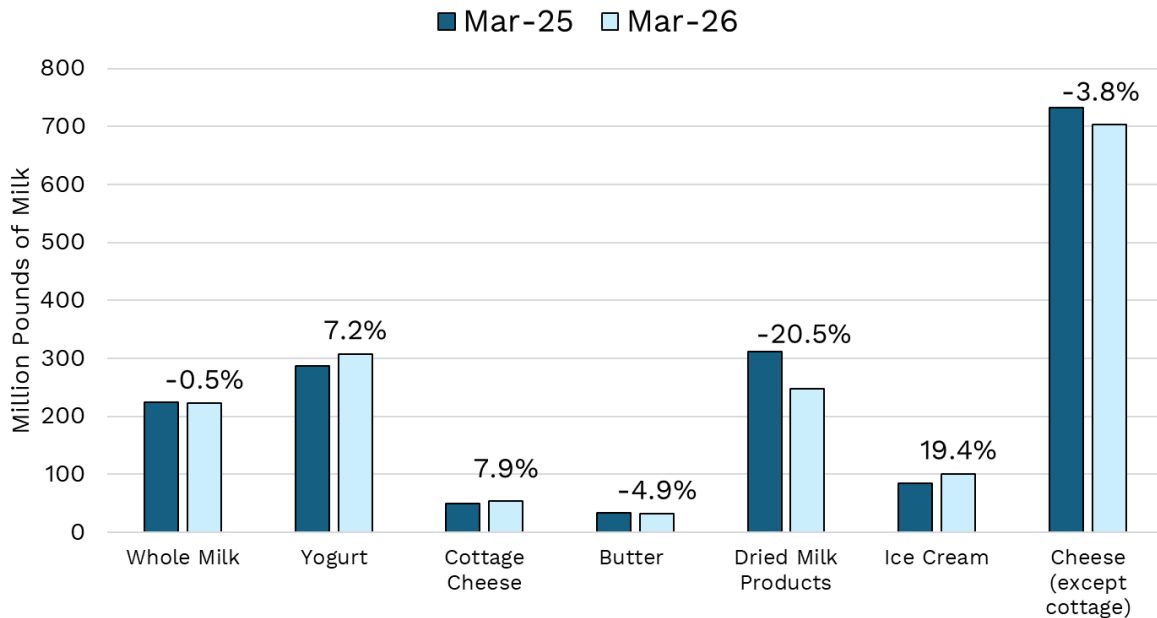


Class Definitions	
I	Fluid milk products, cultured or flavored milk drinks, eggnog
II	Yogurt, ice cream, soft products, sour cream, bakery products, cottage cheese, frozen desserts
III	Cheese (other than cottage), condensed milk
IV	Butter, dried milk products

CHART 5

March Milk Utilization by Product, NE FMMO #1

Data labels show % change year-over-year



References

Northeast Marketing Area Federal Milk Marketing Order No. 1. (March 2026). Federal Milk Marketing Order Program. <https://www.fmmone.com/>

U.S. Department of Agriculture, Agricultural Marketing Service (March 2026). My Market News: Report 3462, "Producer Milk Components". <https://mymarketnews.ams.usda.gov/viewReport/3462>

For more information

Lainey Koval, HLK65@cornell.edu, Cornell CALS PRO-DAIRY