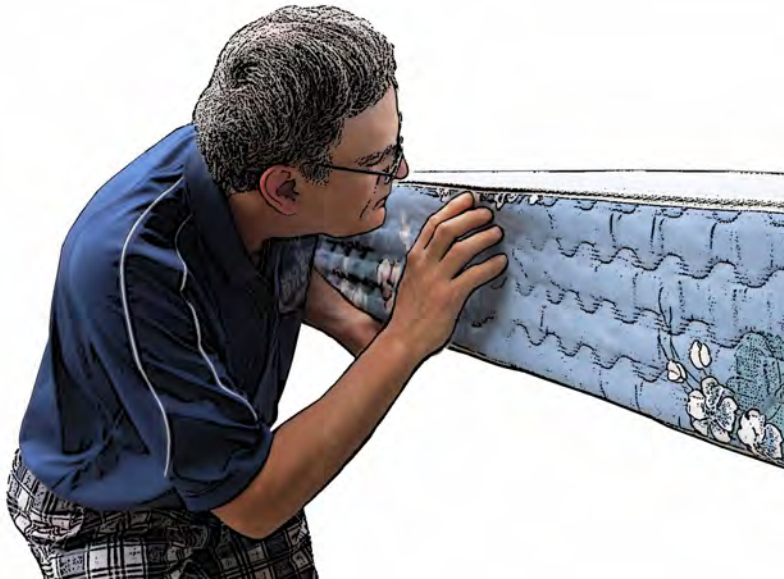


Community **IPM**

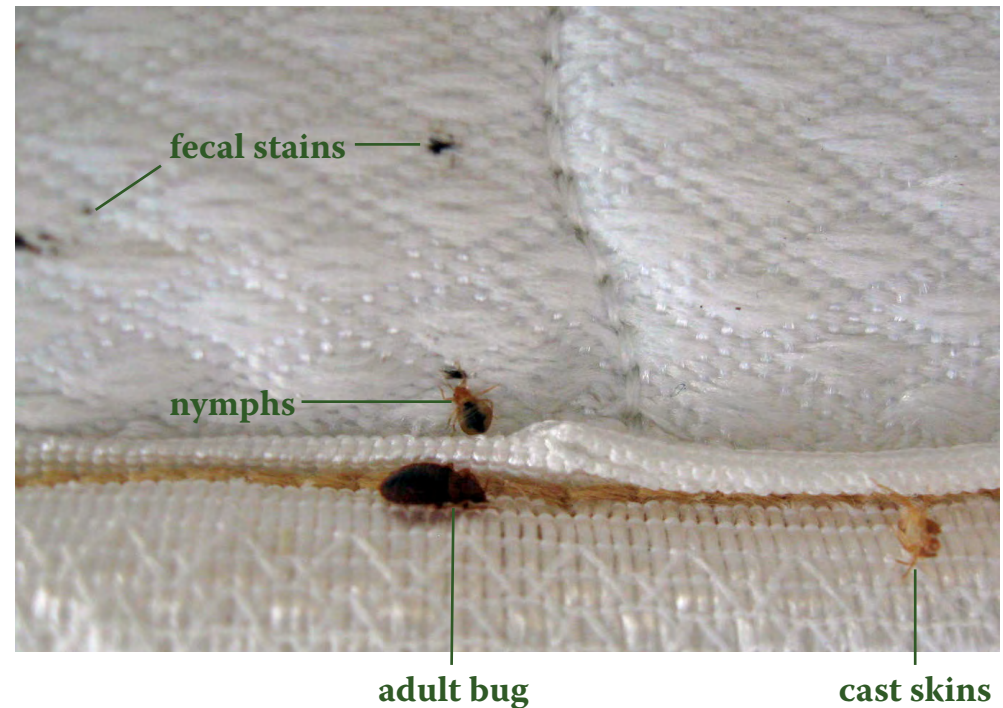
Bed Bug Management—One Step at a Time! **Step 7: How to Dispose of an Infested Mattress**

Matthew Frye, New York State Integrated Pest Management Program, Cornell University

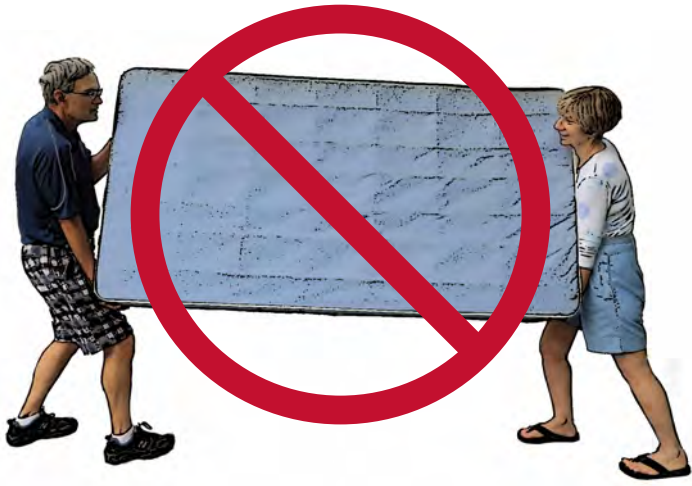
1 Are bed bugs on your mattress?



2 Look for evidence.



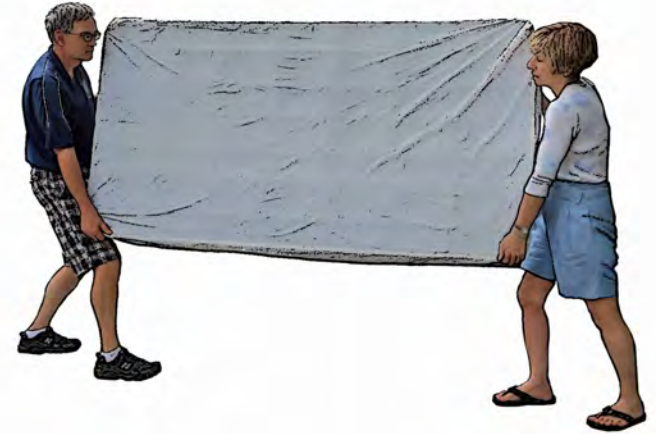
3 Do not move an infested mattress! This can spread bugs to other rooms.



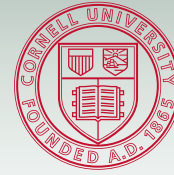
4 Cover infested mattress and box spring with plastic mattress bag.



5 Covers prevent bugs from falling off and infesting other rooms.



6 Stop the spread! Let others know NOT to take your mattress.



Cornell University
Cooperative Extension

IPM New York State
Integrated Pest Management
Program

Produced by the New York State Integrated Pest Management Program, which is funded through Cornell University, Cornell Cooperative Extension, the New York State Department of Agriculture and Markets, the New York State Department of Environmental Conservation, and USDA-NIFA. Illustration and design by Karen English, New York State IPM Program. Cornell Cooperative Extension provides equal program and employment opportunities. © 2013 Cornell University and the New York State IPM Program. Posted 11/2013 at www.nysipm.cornell.edu/factsheets/buildings/bb_mgmt_steps/dispose.pdf

This is the last step in the series.