



Volume 4, Issue 1/2

Points of Interest

in Biomedical Sciences

Newsletter Date: January/February 2011

Inside this issue:

Welcome, New Recruits	2
Accomplishments in Pathology	3
Elves Thank You!	3
Publications	4
Biomedical Sciences Seminar Series	5



Quotables:

Life's greatest happiness is to be convinced we are loved.

~ Victor Hugo

SCAVMA TEACHING AWARDS



Congratulations to Dr. Linda Mizer and Dr. Paul Maza, recipients of this year's SCAVMA (Student Chapter of the American Veterinary Medical Association) Teaching Awards! Dr. Mizer received the Teaching Excellence Award in Basic Sciences; and, Dr. Maza received the Teaching Excellence Award in Community Service.



A SUCCESSFUL DEFENSE!

Congratulations to Ashley Woods, who successfully defended her Dissertation entitled, "Examining the Role of Angiogenic Factors and Early Developmental Defects in the Pathogenesis of Preeclampsia in a Mouse Model, BPH/5". Way to go Dr. Woods!



WELCOME, NEW RECRUITS!**Brian Caserto, DVM** - *Lecturer in Anatomic Pathology*

Dr. Caserto received his DVM from Cornell in 2007. He completed an anatomic pathology residency at Kansas State University and achieved diplomate status in the American College of Veterinary Pathologists in 2010. Dr. Caserto enjoys diagnostic pathology and teaching, and hopes to pursue his interests in orthopedic pathology and wildlife pathology while at Cornell.

**Martin Slade** - *Technical Services Support*

Martin received a Bachelors' Degree in Biology from Elmira College. He obtained an ASCP Histotechnician certification and a New York State Clinical Laboratory Technologist Licensure. Martin was previously employed at Bristol Myers Squibb Company (Syracuse, NY), Wilson Medical Center (Johnson City, NY), and AHDC Molecular Diagnostic Laboratory (Cornell University, Ithaca, NY)

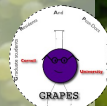
Kathy Fowler - *Administrative Assistant*

Please welcome Kathy Fowler-Campbell who joined the Department of Biomedical Sciences on December 16, 2010 as an Administrative Assistant. Kathy has worked for approximately 10+ years at Cornell, most of them in the Discharge Office of the hospital and in Clinical Pathology. Kathy brings a wide variety of talent in her new role as "team leader" in the Section of Anatomic Pathology Service Office located in the new AHDC building. She will be overseeing the daily operations of the office, as well as providing direct administrative support for the Section. Please join us in welcoming Kathy!



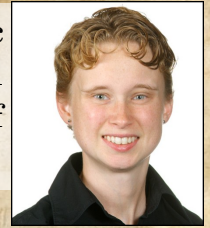
**Don't miss the party with
the G.R.A.P.E.S.!**

**Tuesday, February 22nd,
at 5:00-6:30pm (following the
Biomedical Sciences Seminar) in
the 2nd Floor Conference Rm.**

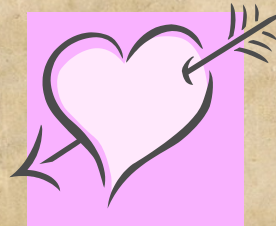
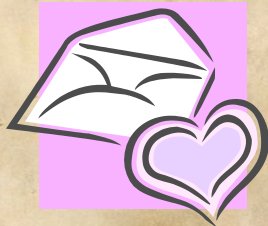


ACCOMPLISHMENTS IN PATHOLOGY

Dr. Catherine Benson completed her third year of residency in anatomic pathology in July and has been selected for advance training in clinical pathology through a residency at the Veterinary College at the University of Minnesota.



Three Cornell veterinary pathologists who have completed training in the Section of Anatomic Pathology have become members of the American College of Veterinary Pathologist by passing the rigorous certification examination this fall. Dr. Tim Cushing has taken a position as a comparative diagnostic pathologist in South Carolina. Dr. Bekah Fleis is on the faculty at the veterinary college at the Utrecht University, the Netherlands and Dr. Liz Dobson is currently in Africa.



A GREAT BIG THANK YOU TO ALL THOSE GENEROUS INDIVIDUALS WHO DONATED TO THE CORNELL ELVES THIS PAST HOLIDAY!

Taken from an email from the Vet School Elves Coordinator:

"We just heard that the Cornell Elf Program (throughout the whole University) sponsored 824 children (last year's record was 656). Here at the Vet College we sponsored 33 children and also gave small gifts to their older and younger siblings. This is truly amazing and really shows how much people at Cornell and friends of Cornell know the meaning of giving- especially to children!"



PUBLICATIONS

- ♥ Bunaciu, R. P. and A. Yen (2011). "Activation of the aryl hydrocarbon receptor AhR promotes retinoic acid-induced differentiation of myeloblastic leukemia cells by restricting expression of the stem cell transcription factor Oct4." Cancer research.
- ♥ Chang, H. and S. S. Suarez (2010). "Rethinking the Relationship Between Hyperactivation and Chemotaxis in Mammalian Sperm." Biology of Reproduction **83**(4): 507-513.
- ♥ Cherry, E. M. and F. H. Fenton (2010). "Realistic cardiac electrophysiology modelling: are we just a heartbeat away?" The Journal of physiology **588**(Pt 15): 2689.
- ♥ Congleton, J., H. Jiang, F. Malavasi, H. Lin and A. Yen (2010). "ATRA-induced HL-60 myeloid leukemia cell differentiation depends on the CD38 cytosolic tail needed for membrane localization, but CD38 enzymatic activity is unnecessary." Experimental cell research.
- ♥ Fortune, J. E., M. Y. Yang and W. Muruvi "In vitro and in vivo regulation of follicular formation and activation in cattle." Reproduction, Fertility and Development **23**: 15-22.
- ♥ Kan, R., P. Yurttas, B. Kim, M. Jin, L. Wo, B. Lee, R. Gosden and S. A. Coonrod (2011). "Regulation of mouse oocyte microtubule and organelle dynamics by PADI6 and the cytoplasmic lattices." Developmental biology **350**(2): 311-322.
- ♥ Kennedy, M. J., S. J. Stelick, L. G. Sayam, A. Yen, D. Erickson and C. A. Batt (2011). "Hydrodynamic optical alignment for microflow cytometry." Lab on a chip.
- ♥ Lin, Y. P., S. P. McDonough, Y. Sharma and Y. F. Chang (2010). "Leptospira immunoglobulin-like protein B (LigB) binding to the C-terminal fibrinogen alphaC domain inhibits fibrin clot formation, platelet adhesion and aggregation." Molecular microbiology.
- ♥ Munoz, L. M. and N. F. Otani (2010). "Enhanced Computer Modeling of Cardiac Action Potential Dynamics using Experimental Data-Based Feedback." Computing in Cardiology **37**: 837-840.
- ♥ Munoz, L. M., J. F. Stockton and N. F. Otani (2010). "Applications of control theory to the dynamics and propagation of cardiac action potentials." Annals of biomedical engineering **38**(9): 2865-2876.
- ♥ Russell, D. S., K. M. Rassnick, H. N. Erb, M. M. Vaughan and S. P. McDonough (2010). "An immunohistochemical study of vitamin D receptor expression in canine cutaneous mast cell tumours." Journal of comparative pathology **143**(2-3): 223-226.
- ♥ Smits, J., M. M. Dolmans, J. Donnez, J. E. Fortune, O. Hovatta, K. Jewgenow, H. M. Picton, C. Plancha, L. D. Shea, R. L. Stouffer, E. E. Telfer, T. K. Woodruff and M. B. Zelinski (2010). "Current achievements and future research directions in ovarian tissue culture, in vitro follicle development and transplantation: implications for fertility preservation." Human reproduction update **16**(4): 395-414.
- ♥ Tan, C. P., B. R. Cipriany, D. M. Lin and H. G. Craighead (2010). "Nanoscale resolution, multicomponent biomolecular arrays generated by aligned printing with parylene peel-off." Nano letters **10**(2): 719-725.
- ♥ Tomlinson, J. E., T. J. Divers, S. P. McDonough and M. S. Thompson (2011). "Hypertrophic osteopathy secondary to nodular pulmonary fibrosis in a horse." Journal of veterinary internal medicine / American College of Veterinary Internal Medicine **25**(1): 153-157.

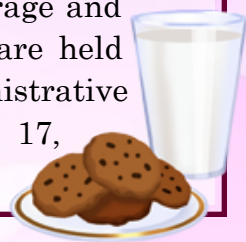
May Lovelace
Cornell University
T8004 VRT, Box 17
Ithaca, NY 14853
mrl34@cornell.edu
607-253-3840



Editor:
Mark Roberson
T4-018 VRT, Box 11
Ithaca, NY 14853
msr14@cornell.edu

The Points of Interest Newsletter is published
monthly by the Department of Biomedical
Sciences of the College of Veterinary
Medicine at Cornell University

Administrative Staff in The College of Veterinary
Medicine are invited to Administrative Networking
Lunches (you bring your lunch - Beverage and
Cookies provided). These luncheons are held
once a month. The next Administrative
Networking Lunch will be February 17,
2011 from 12-1pm in the Hagan Room.



BIOMEDICAL SCIENCES SEMINAR SERIES

FEBRUARY 16

DR. SARAH KNOX

Postdoctoral Visiting Fellow
Matrix and Morphogenesis Unit
Laboratory of Cell and Developmental Biology
National Institute of Dental
and Craniofacial Research,
National Institute of Health
*"Neuronal-Epithelial Communication: The
Language of Glandular Development"*

SPECIAL SEMINAR:

NOTE CHANGE IN DAY/TIME/PLACE
WEDNESDAY, 12:00-1:00pm
PADDOCK LECTURE HALL II

FEBRUARY 21

DR. GABSANG LEE

Postdoctoral Research Associate
Memorial Sloan Kettering Cancer Center
New York, NY
*"Disease Modeling & Drug Discovery Using
Human iPSCs of Neural Crest Related
Diseases"*

SPECIAL SEMINAR:

NOTE CHANGE IN DAY/TIME/PLACE
MONDAY, 12:00-1:00pm
PADDOCK LECTURE HALL II

FEBRUARY 22

DR. JEFFREY C. MURRAY

Professor of Neonatology and Genetics
Department of Pediatrics
Division of Neonatology
University of Iowa
Iowa City, IA
*"Genomic Approaches to Complex Traits in
Pediatrics"*

FEBRUARY 23

DR. TRUDY OLIVER

Ludwig Postdoctoral Fellow
Koch Institute for Integrative Cancer Research
Massachusetts Institute of Technology
*"Molecular Mechanisms of Chemotherapy
Resistance in Lung Cancer"*

SPECIAL SEMINAR:

NOTE CHANGE IN DAY/TIME/PLACE
WEDNESDAY, 12:00-1:00pm
PADDOCK LECTURE HALL II

