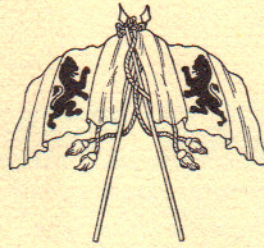


DELTA KAPPA EPSILON

AT
CORNELL
UNIVERSITY





To all Delta Chi Brothers in Delta Kappa Epsilon:

The goals, the objectives, the reasons which caused our great fraternity to have its beginning at Yale some 117 years ago are as real today as they have ever been. We feel they are as vital a driving force in Delta Chi chapter as they were in 1870 when the DEKES came to Cornell.

We are proud of our tradition, ". . . once a DEKE, always a DEKE . . ." and look with renewed fraternal enthusiasm and excitement at the opportunity which is now before us—an opportunity which allows us to show our appreciation for what Delta Chi has meant to each of us, as well as an opportunity which allows us to help make possible the same advantages of fraternity life as a DEKE to those in the future. It is with excitement and anticipation we urge you to remember our open motto, and to act accordingly.

"FROM THE HEART, . . . FRIENDS FOREVER."

HAROLD D. NORTH, JR. '36
President, Alumni

LAURENCE S. HELFFRICH '23
Campaign General Chairman

Delta Kappa Epsilon is forever dedicated to these objectives:

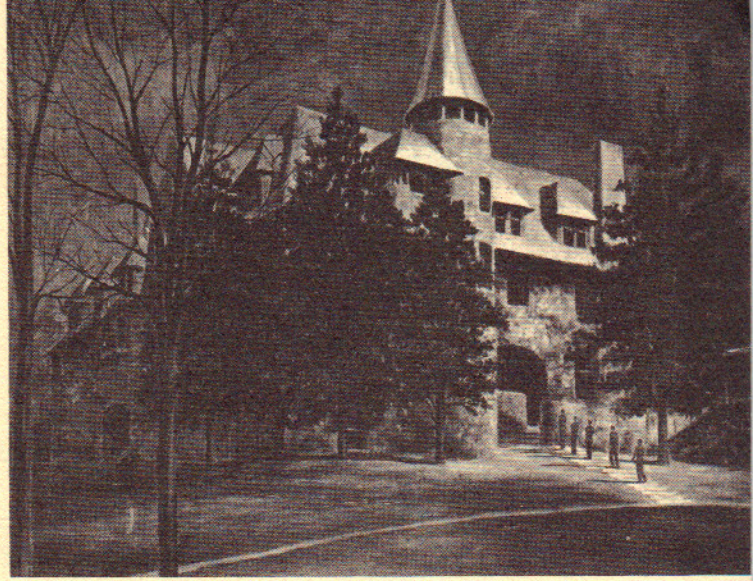
THE CULTIVATION
of general literature and social culture.

THE ADVANCEMENT
and encouragement of intellectual excellence.

THE PROMOTION
of honorable friendship and useful citizenship.

THE MAINTENANCE
of gentlemanly dignity, self-respect, and morality in all circumstances.

THE UNION
of stout hearts and kindred interests to secure to merit its due reward.



Fraternities

mean many things to many people even though, in a general sense, the goals of all are similar. Some members joined Delta Kappa Epsilon because they knew the outstanding reputation of the National Fraternity. Others became members because they "liked the boys" or because their personal friends joined. Still others joined because of relatives who were DEKES.

Some DEKES will fondly remember standing at the foot of the long stone stairs "waiting to be called in." Some recall the Junior Parties, the boat parade on Schoellkopf, the Freshman Beer Parties. Remember—even as late as the thirties—when a fraternity brother wouldn't think of mingling with the co-eds? Who remembers "pinning *the* girl" on the swinging bridge?

Who can forget our brother Charles Baskervill, Jr. '19 and his unforgettable painting of the chapter house. To some the chapter house will always be "13 South" while others refer to it as the "Old Grey Castle."

ΔKE AND *You*

Regardless of fraternal memories, in a very special way, Delta Chi made a lasting impression on each member and added something special to his life. Whatever DKE has meant to you personally, she has given each brother the realization of the tremendous number of contributions she can and does give her active members both today and in the future . . . benefits which can only come as a part of the ceaseless effort she makes to encourage the individual's complete personal development morally, intellectually, physically and socially.

It is then, with renewed excitement and anticipation, that we look to the future for the challenging service we can give our fraternal brothers and our Alma Mater.

What is the Need?

The renovation program for the Delta Chi chapter house came about as the result of many serious needs. The home, constructed in 1890, very much feels its age with out-of-date, inadequate and in some instances useless electrical system, heating system, plumbing, flooring and walls. The steps and landing to the main entrance are in a dangerous condition. The roof leaks. Doors and windows are in need of repair. The second and third floor rooms need walls patched, floors sanded and tiled, woodwork finished. Kitchen and bathrooms need to be modernized with new fixtures and equipment.

Secondly, because of its condition, it presents an undesirable atmosphere in which to carry on the serious work of the chapter.

A third reason is that in a very practical sense, we must compete with other fraternities and this includes competition in living conditions. The economics of our day finds students expecting and demanding desirable up-to-date living quarters as one of those many reasons why they ultimately pledge to a particular fraternity. Not only do the students demand it, but the University itself demands it. If the DEKES are to continue to build a strong brotherhood, we must be able to successfully compete for the student whose character is such as to qualify him for membership in Delta Chi, and whom we would be proud to call brother.

Not the Biggest

The DEKES at Cornell are not, nor have ever been, desirous of becoming the biggest or even a large fraternity. BUT, they have been and continue to strive to be the best—the most desirable on campus. An example of this is their recent surge to the front in scholastic achievement moving from 54th to 18th in the ranking.

We are proud of her accomplishments of the past. We are equally happy about her present high caliber of members. If we are to continue to have this pride in our brotherhood, we must share the responsibilities and opportunities now presented to us.

Campaign for \$150,000



Our fraternity will be better able to carry out her purposes for being, as well as maintain campus leadership, when we accept this challenge for her future. The renovation program which was approved by the Board of Governors calls for the expenditure of \$150,000.

The organization of the campaign has already begun with the drive itself scheduled to start in July and run for a period of approximately six weeks. When the campaign is successfully concluded by gifts and pledges, we can take an historic step—one which could mean as much to Delta Chi in the challenges of the 60s as did the construction of the home itself in 1890.

Memorial Opportunities in Our New Home

Every stick of furniture, every inch of earth, every brick and stone that makes up our present DEKE chapter home is a gift of someone in her past. Delta Chi has come into being, survived difficult times and moved forward into a fraternal brotherhood that brings us pride and satisfaction. This was possible because of those many members, alumni and friends who gave their loyalty, their personal energies and their financial resources.

The "new" DEKE home has many memorial opportunities available, each one a measure of the thoughtfulness and the memory and the extent of what Delta Kappa Epsilon has meant to her members. These memorials can be found listed on the following page in this brochure. With their selection comes a certain knowledge that there is a means of providing a gift to the countless DEKES of the future at Cornell who deserve to have the opportunities that were ours as members.

To better enable our alumni to take advantage of these memorial opportunities, the Board of Governors has approved of a thirty month—four tax year period of payment beginning July 1, 1961.

Opportunities for Parents--Too!

As a parent, you can be justly proud of your son becoming a member of Delta Kappa Epsilon. Certainly no fraternity has nobler ideals, commands more loyalty and respect, nor holds a higher reputation than Delta Kappa Epsilon and the Delta Chi chapter at Cornell. It is Delta Chi's purpose to conduct itself, its affairs and its program in such a manner that you may always be proud of your son's association with it.

We are confident he will never regret his allegiance and devotion to it. For this reason, we are presenting a special opportunity for parents to participate in our future plans. You can make possible no finer memorial to your son than by your support at this time. Memorial opportunities are listed on the next page. A suitably inscribed plaque will record forever not only your generosity, but your support of the high ideals of Delta Kappa Epsilon.



IN MEMORY OF JOHN ANDREWS
CLASS OF 1911

Memorials

FIRST FLOOR

Living Room	\$20,000
Living Room Furnishings . . .	5,000
Library	15,000
Library Furnishings	3,000
Entrance and Hall	10,000
Card Room	5,000
Card Room Furnishings	1,000
Dining Room	10,000
Dining Room Furnishings . . .	3,000
Kitchen and Equipment	10,000

SECOND FLOOR

14 Studies ea.	1,200
14 Study Room Furnishings ea.	450
Alumni Suite	2,000
Alumni Suite Furnishings	1,000
Restroom	4,000

THIRD FLOOR

14 Bedrooms ea.	1,200
14 Bedroom Furnishings . . ea.	600
Restroom	4,000

BASEMENT

Recreation Room	5,000
Recreation Room Furnishings	1,200