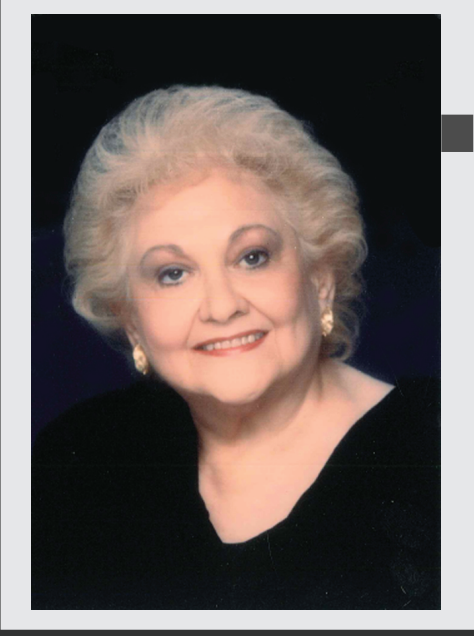


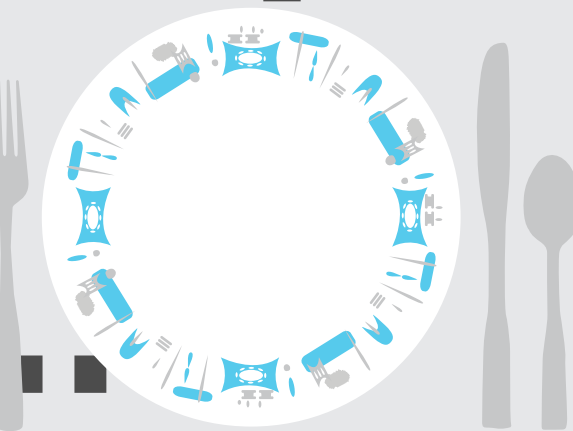
Recipes and Research: Who Uses a Cookbook Collection?

Megan Kocher, University of Minnesota Libraries



Introduction

The Doris S. Kirschner Cookbook Collection at the University of Minnesota is comprised of approximately 3500 books and pamphlets ranging in publication date from 1890-present. The collection does not circulate, but is available for use in the Magrath Library by the University community as well as the general public. Because there are no circulation statistics on the use of this collection, I sought to gain insight into its use through a voluntary user survey advertised in the collection, on social media sites, and directly to members of the Department of Food Science and Nutrition where the collection was formerly housed.



User Feedback

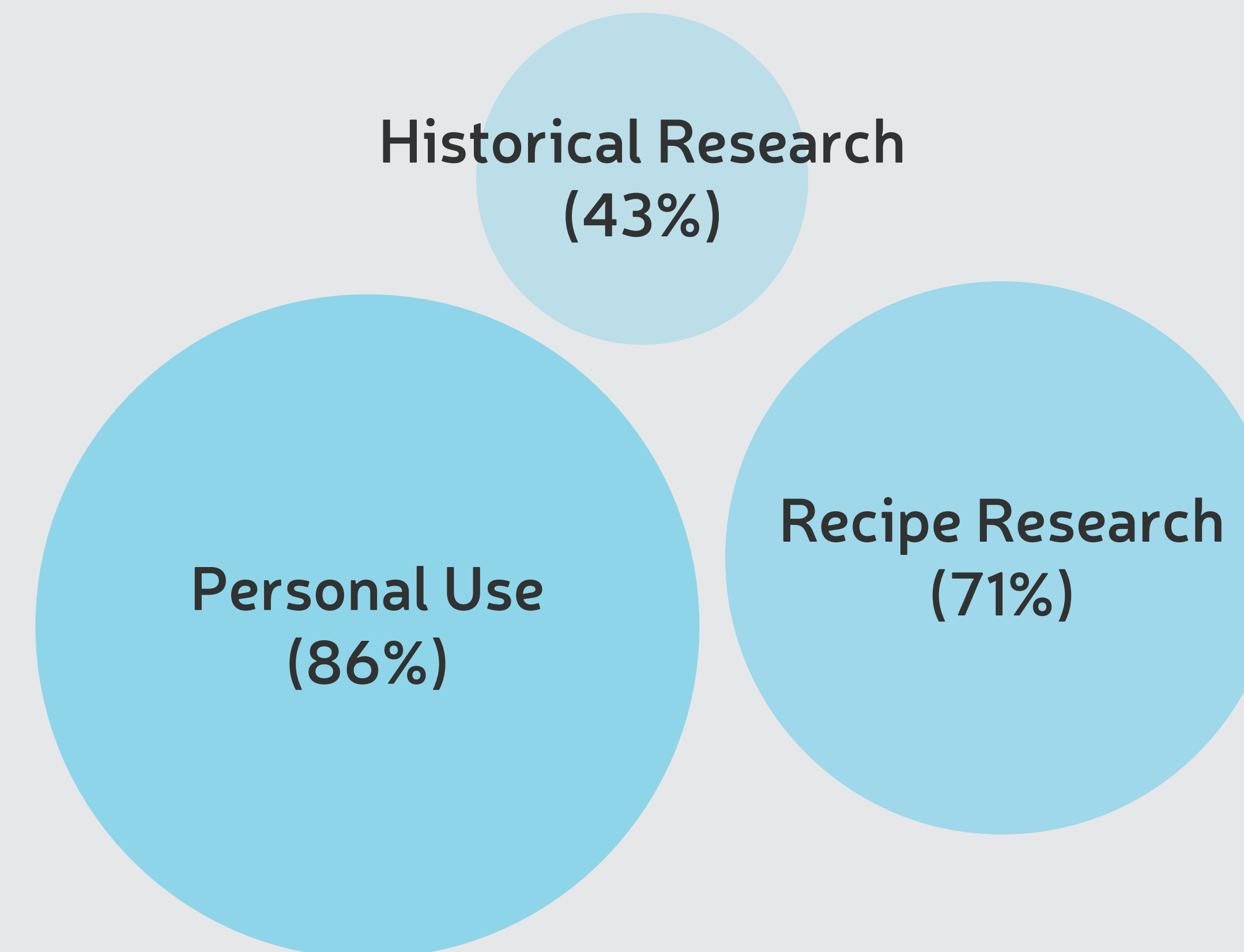
"I discovered the cookbook collection in 2009, just by chance when I was picking up an ILL item. This was shortly after my mother passed away. She loved to cook and loved cookbooks. It's a place I can go to and feel a connection with her."

"I have recommended the collection to nutrition colleagues about how fascinating the resources are. For example, there is a small pamphlet that describes why tapioca beads were created to help women in the kitchen (I won't spoil anyone's surprise)! I also use the collection to research information about historical recipes and nutrition recommendations..."

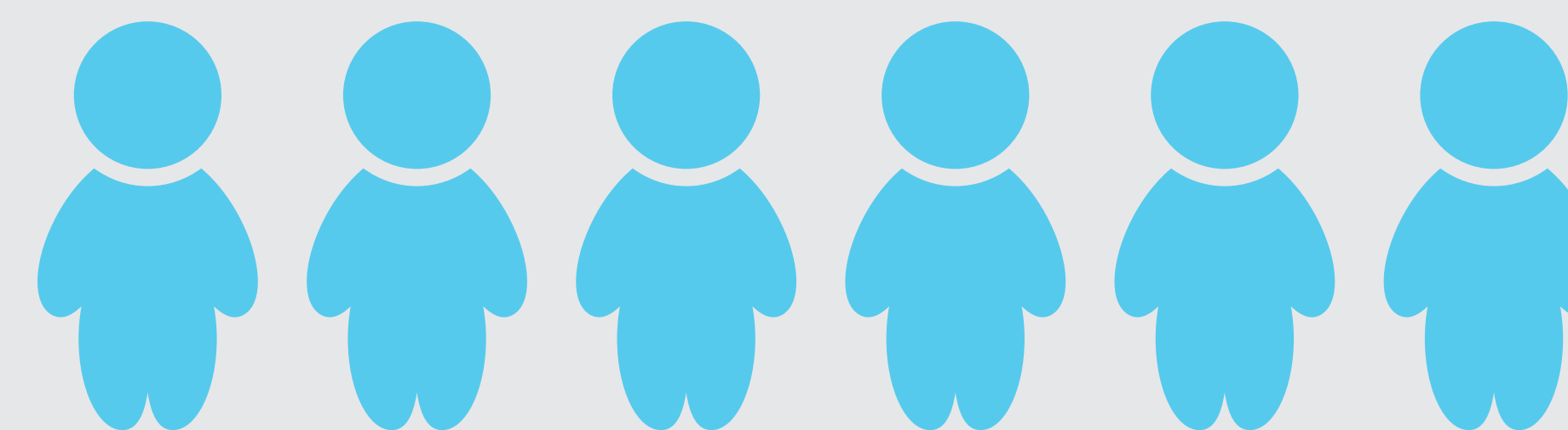
"I have been developing a research article about water recommendations for adults and how they were reported in cookbooks."



How Have You Used the Collection?



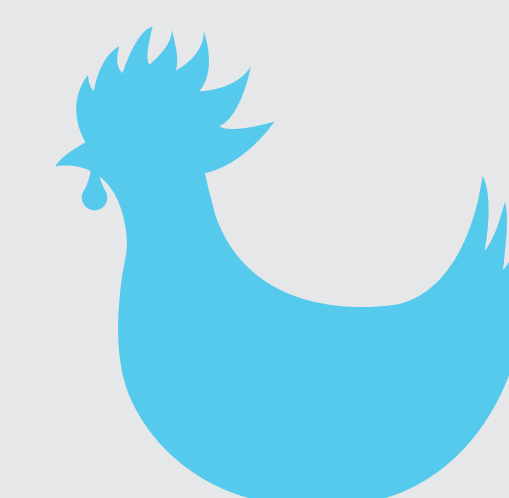
User Affiliation to the University of Minnesota



University Staff (71%)



Alumni (14%)



No Affiliation (14%)

No response from: Undergraduate Students, Graduate Students, Faculty

Blogging



Cooking



Teaching



Recipe Creation



Research Article



What are the end results of collection use?

Conclusions

This survey is still on-going. The information gathered so far will be useful in marketing the collection to academic and personal users and informing collection development and event planning. The biggest questions that remain are around faculty and student use. Further research will be required to determine the collection's importance to these audiences.