



WEEKS OF DECEMBER 23 AND DECEMBER 30, 1990

# STATION NOTES

## CALENDAR OF EVENTS

Tuesday, December 25 thru  
Tuesday, January 1  
Station Closed

Thursday, December 27, 6:30 pm  
Sawdust Cafe  
*English as a Second Language*

Thursday, January 3, 6:30 pm  
Sawdust Cafe  
*English as a Second Language*

## PEOPLE, POLICIES AND PROCEDURES

### • *New Baby Congratulations*

Congratulations to Pat (HS) and Kevin Wallace on the birth of their daughter, Jacquelyn Marie, on December 10.

Congratulations to Rixana (HS) and Curt (IPM) Petzoldt on the birth of their daughter, Jane Emily, on December 13.

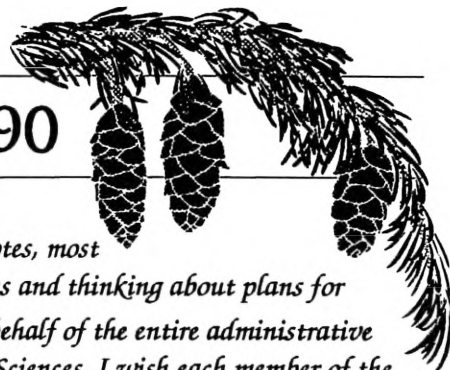
### • *Wedding Congratulations*

Congratulation to Steve (HS) and Debbie Dennings on their marriage November 17.

## BUILDINGS TO HOLIDAY SETBACK BEGINNING EVENING OF DECEMBER 21

Although the Station will not be officially closed on Monday, December 24, buildings around campus will be on Holiday Setback beginning on Friday evening, December 21. Those individuals not taking vacation on December 24 should dress appropriately for the conditions. Your cooperation is appreciated.

## holidays—1990



*As you receive this issue of Station Notes, most of you will be participating in holiday parties and thinking about plans for Christmas just a few short days away. On behalf of the entire administrative staff of the College of Agriculture and Life Sciences, I wish each member of the Station family a joyous holiday season and a wonderful new year.*

*To say that these are not difficult times would be an untruth. What the new year will bring is uncertain in many respects. There can be no question but what the United States is in a recession. And, we know New York State has fiscal problems of great magnitude. At this time we still do not know how this will impact the Station.*

*We will have to answer some difficult questions over the next few weeks and months. In doing this, our objective is very simple—To determine what kind of research and extension programs are critical at the Station to support the fruit and vegetable industry of the state.*

*In spite of the current budgetary problems, we have much to be thankful for as an institution. The Station has been through tough times before, and survived—usually becoming stronger, in fact. We have dedicated employees and one of the finest faculty in the world, a faculty that is committed to developing and using the best scientific technologies to serve New York's fruit and vegetable industry. We all have an important job which is to see that the results of our research and extension efforts continue to keep New York agriculture competitive with other regions of the country and world.*

*The Geneva Station is known throughout the world for its research accomplishments. As we enter a new year, we can look forward to attaining even greater heights over the long term. We can be proud of our accomplishments, and these will ensure that the Station will remain intact and continue to fulfill its commitment to all the citizens of this state. The fact that the Station is recognized worldwide for its contributions is due to the efforts of all of you. I thank you for this and for your loyalty and support in the past, and I look forward to working with you in the years ahead.*

*Happy Holidays and may the New Year bring you joy and good health, and may our country enjoy a resurgence of prosperity and a peaceful resolution to the Mideast crisis.*

*James E. Hunter, Director*

## CONSERVE ENERGY—TIMERS AVAILABLE FROM B & P

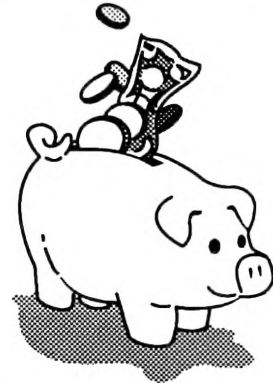
Saving energy saves jobs! It is absolutely essential that everyone at the Station save on the use of energy whenever possible.

Energy conservation is everyone's job. A *Conserve Geneva Committee* has been formed to help Administration determine various ways of conserving energy, be it light, gas, oil, water, sewage. About half the Station's one million dollar utility bill is used to pay for electricity, so a lot of effort is being made in trying to find ways to conserve on the use of electricity. Here are some things that you can do to help conserve electricity or heat (generated by our heating plant and using large amounts of #6 fuel oil):

- If an area will be vacant for more than 30 minutes, please turn off all lights.
- Equipment that runs continuously with minimum duty should be considered candidates for turn-off.
- Fume hoods that are unused should be turned to unoccupied or asked to be turned off (each department representative is working with employees on identifying hoods that can be turned off "permanently").
- Consolidate work in greenhouses (Horticultural Sciences and Entomology already have excellent plans for making major savings in this area).
- Set timers in greenhouses that control supplemental lighting to operate early in the morning rather than in the evening (least expensive rates are between midnight and 6 a.m.)
- Where you have air conditioning or thermostats that you control, please keep the temperature as cool as possible in the winter and as warm as possible in the summer. Dress accordingly, so long as all criteria are met for safety.
- Identify where shades or blinds can be installed in windows to provide insulating effect.
- Clean out fume hoods of all unnecessary chemicals and pesticides. Waste chemicals are to be taken to Al Meaden in Food Science and Technology, and pesticides to Mart VanKirk in the Field Research Unit. Then, see if your hood can't be shut down at night or perhaps altogether for long periods of time. Hoods should not be used for storing chemicals on a continuing basis.
- In the same regard, only obtain as much chemical or pesticide as you require. Large quantities of chemicals or pesticides that will not be consumed within a reasonable period are not to be kept in any laboratory.

Here is just one example of how you can help. Many laserwriters are left on 24 hours a day. Also, there are some coffee pots on campus that heat

24 hours a day. For just \$5, it is possible to obtain a timer from Buildings and Properties that will let you cycle the printer or coffee maker during the evening and night hours.



How many of you remember the song *7 1/2 cents* from the Broadway musical, *Pajama Game*? Seven and a half cents doesn't mean very much by itself, but let's take an actual example here at the station with a coffee maker that heats continuously. It costs about 9.3 cents per hour to run that coffee maker. If it can be turned off for 12 hours per day (from 6 p.m. until 6 a.m.), it will save more than \$1.11 per day. That is \$405.15 per year. A laserwriter costs more than \$700 to operate a year if it is left on all the time. There is another \$350 or so that can be saved if it can be turned off from 6 p.m. until 6 a.m.

This amounts to savings of nearly \$760 per year for just these two pieces of equipment. Multiply that by dozens of similar pieces of equipment and literally thousands of lights, and the savings are extraordinary.

Please do your part. Help *Conserve Geneva*.

## BOB KIME RECEIVES TWO AWARDS

Bob Kime, Food Science and Technology, was recently presented the 1990 "Beekeeper of the Year Award" by the Empire State Honey Producers Association. The award is given annually to one of the state's 8,000 apiculturists who has made outstanding contributions to beekeeping and the honey industry.

The presentation was made this month at the Empire State Association's winter meeting in Syracuse where Bob gave a talk on his research at the Station and some new uses of honey. The award consists of a plaque and a beeswax mug.

Bob also recently won the E. A. Weiss Award for Best of Show in the Eastern Apicultural Society's mead (honey wine) competition. This award, a silver bowl, was made at the society's annual meeting held this past summer in Holyoke, Massachusetts where Bob gave a talk on honey patents.

Research on honey by Bob and his colleagues in Food Science and Technology has resulted in two U.S. patents, two patents pending, and more than 10 publications. In addition, requests for information on their work have been received from



40 countries around the world. Bob's discoveries involve the use of honey as an antioxidant and clarifying agent in fruit juices and wines and a new method of honey wine making. Three New York State companies with nationwide distribution of their products use honey in methods developed by Bob.

Bob is a frequent speaker on the subjects of bees, beekeeping, and honey at local schools, civic organizations, and state and national honey producers' association meetings.

Congratulations Bob!

*Joe Ogrodnick*

## RACQUETBALL LADDER

No matches played 12/13-12/19.

Jim McFerson	PGRU	390
Chris Hayes	HS	246
Curt Petzoldt	IPM	206
Phil Forsline	PGRU	390
Tom Burr	PP	315
Joe Kovach	IPM	209
Gary Harman	HS	246
Ed Woodams	FST	265
Matt Lewis	CS	251
Walter Wolf	ENT	362

If interested in joining the ladder or to report game results, call Matt Lewis at x251.

## CLASSIFIEDS

**WANTED:** Exercise bicycle. Call Kathy Poole at 789-2897 after 5:00 pm.

**HOUSING NEEDED:** Furnished housing needed for visiting scientist. Korean family of five (children older). Preferably within walking distance to Station. Needed for one year beginning mid-March 1991. Contact Cheryl Paine at x243.

**Apartment:** 2-bedroom, completely furnished. Linens, dishes, cookware, silverware, and color television provided. Excellent location and within walking distance to Station. Off-street parking, no pets, and reasonable. Call x366 or 789-6624.

**1982 Ford Escort.** \$700.00. Call x366 or 781-0583.

**Recycle LaserWriter Cartridges:** Get CASH for used laserwriter cartridges. Sell them to a recycler. Must have cleaner bar and original styrofoam packing and box. Contact: Willow Products Corporation, 3857 Willow Avenue, Pittsburgh, PA 15324, Telephone 800-426-8196.

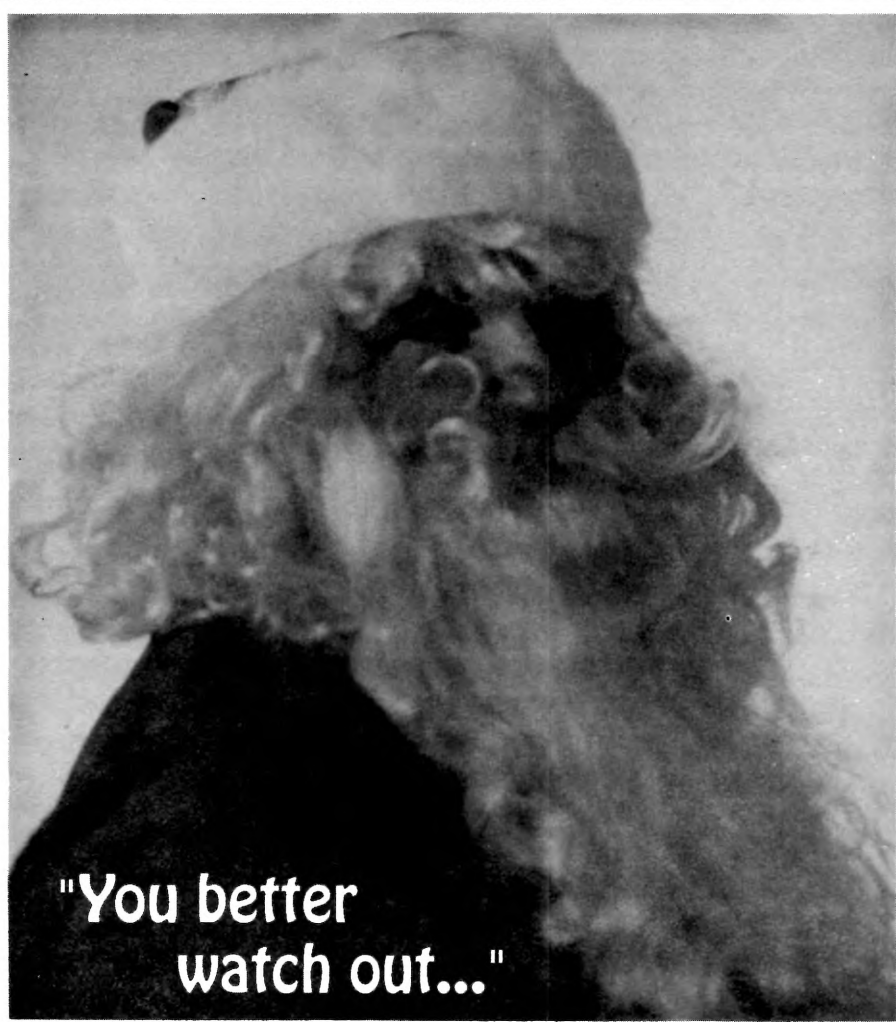
## BOB "SANTA" NELLIS COMPLETES 19TH YEAR

This is the 19th year Bob Nellis (Field Research Unit) has played Santa to needy families in the Geneva area. With the help of Ken Livermore (Horticultural Sciences) who joined the "Santa" ranks last year, more than 250 families will receive gifts of toys, flowers, and holiday dinners. Station people and others wishing to support the effort may drop off new or good used toys to Bob at the Farm Services Building any time during the year.





Don't miss this week's edition of **NETWORKING!!**



"You better  
watch out..."