

# Genesee Land Trust

## Strategic Conservation Plan-Focus Areas

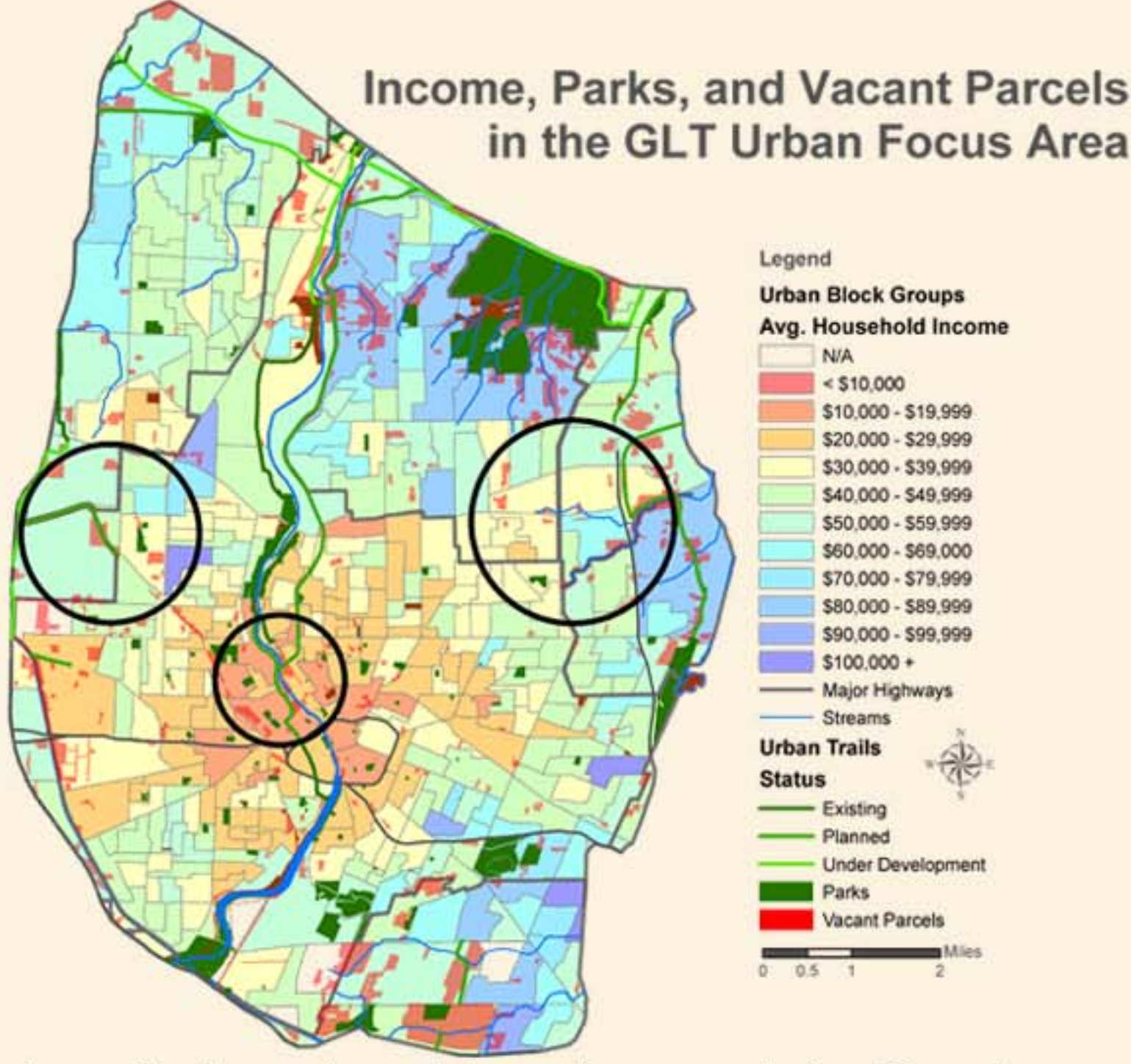
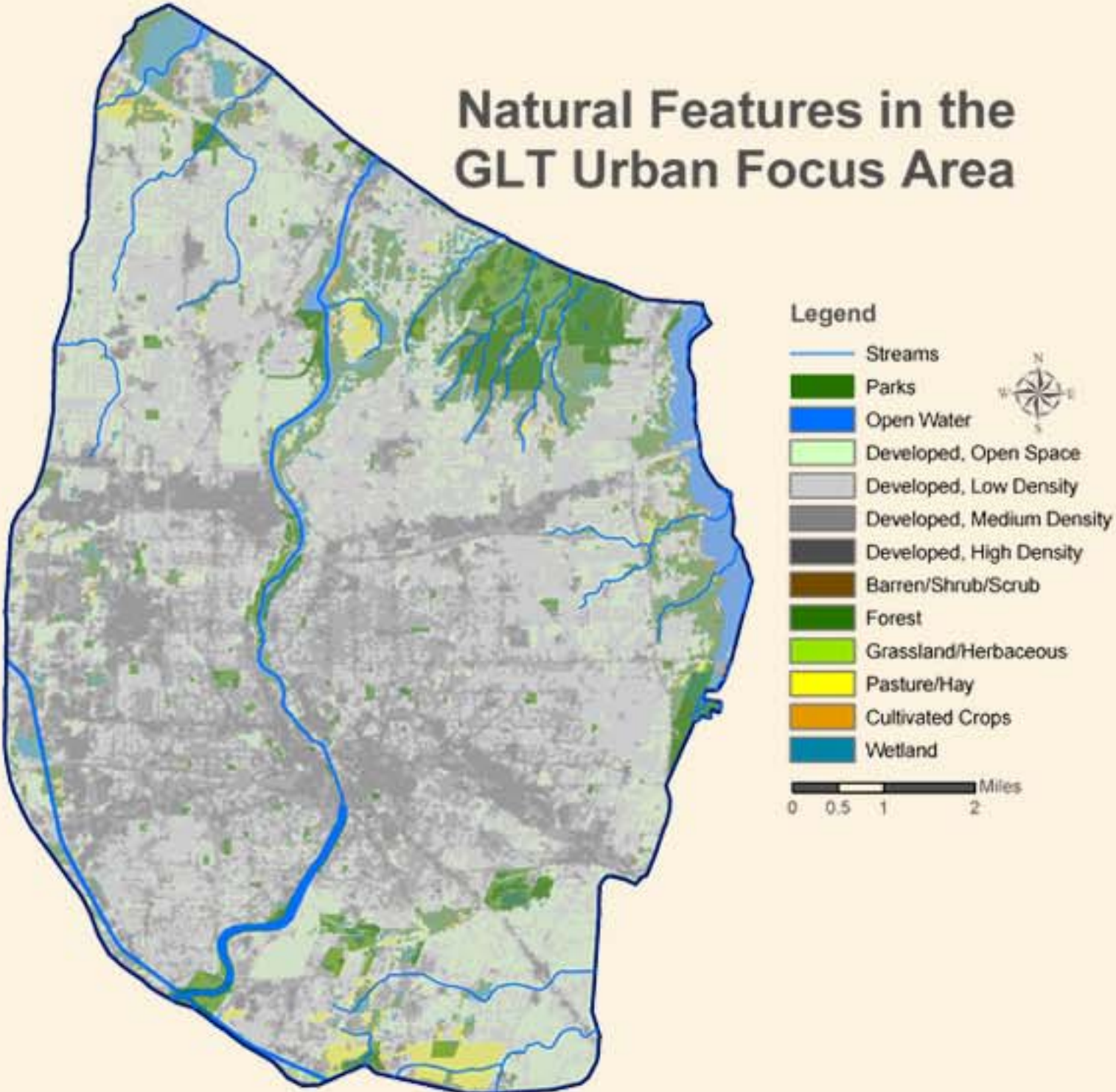


This project is funded in part by a grant from the New York State Conservation Partnership Program, administered by the Land Trust Alliance Northeast Program with support from the State of New York.

The Genesee Land Trust (GLT) Territory features a wide range of natural resources including agricultural lands, forests, wetlands, rivers, and lakes. However, faced with limited resources, the GLT cannot protect all of these important landscapes. Focus areas allow land trusts with large territories to concentrate resources in a portion of their territory with high conservation value. Focusing limited resources allows a land trust to more carefully analyze local conditions and develop relationships with landowners. The Cornell team, in coordination with the GLT, identified two focus areas that have a high conservation value to the Land Trust.

**Urban Focus Area**  
The GLT places a high value on urban lands along Rochester's prominent natural features. Other priorities in the Urban Focus Area include connecting protected lands with low-income neighborhoods and following historic corridors. The Urban Focus Area is bounded by Interstates 390 and 590 to the west and south, Irondequoit to the east, and Lake Ontario to the north.

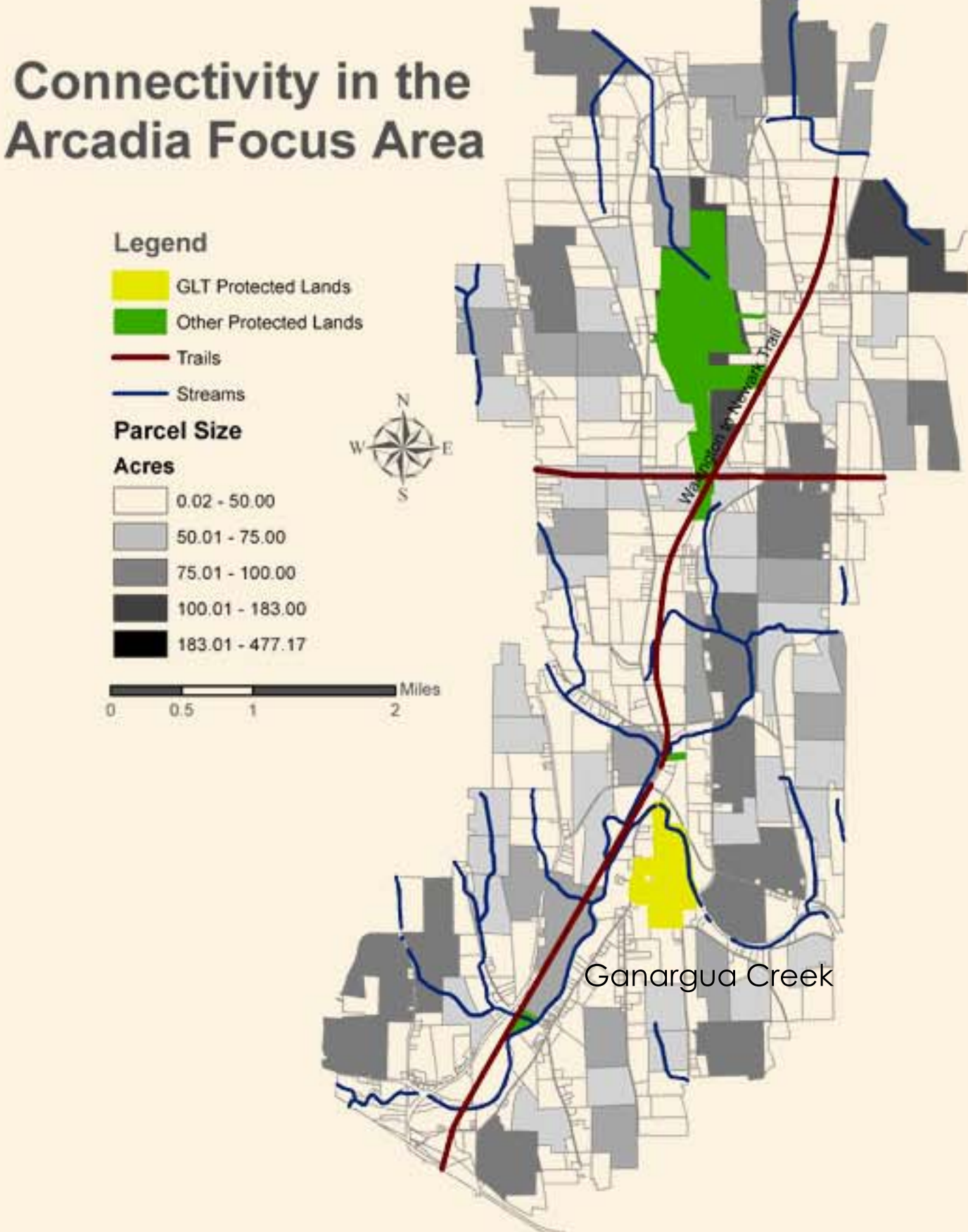
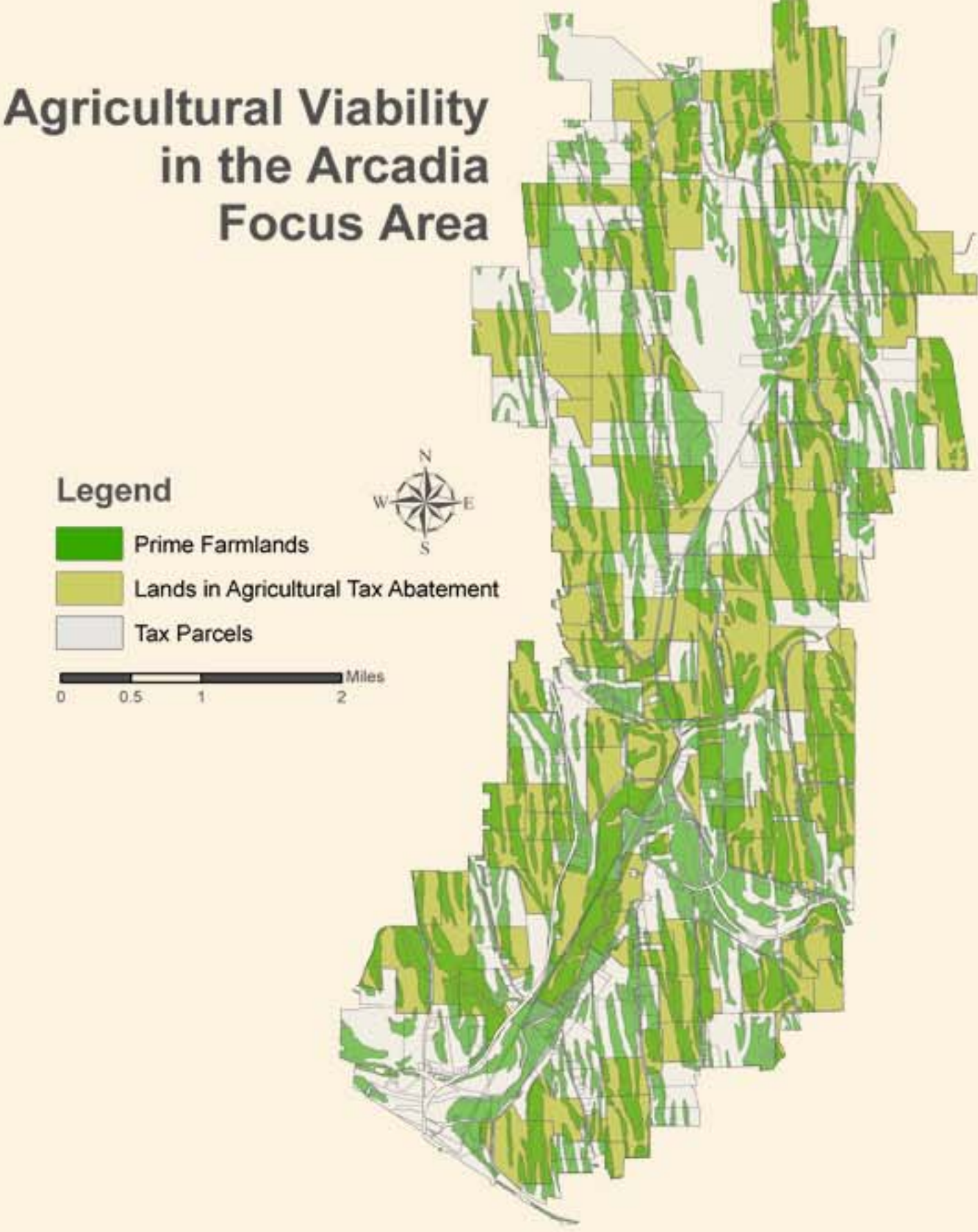
The GLT places a high value on urban lands adjacent to features including topography, water resources, and existing natural lands. Areas of high relief along water bodies protect both habitat and scenic vistas. On the map, dark green and yellow patches represent forest and grasslands, respectively.



Armed with knowledge of park locations and significant natural features, the GLT can begin connecting urban lands with low income neighborhoods. For instance, the circles highlight potential areas (Old Erie Canal Bed, Genesee River Gorge, Densmore Creek) for the GLT to assist in urban conservation projects.

**Arcadia Focus Area**  
Located in the eastern half of the town of Arcadia, this focus area highlights Wayne County's excellent opportunities for conserving farmland. The Cornell team identified this area largely due to high quality agricultural lands, protected land connectivity, and scenic resources. The 10,000 acre focus area includes the Peacework Farm, owned by the GLT.

The GLT's Peacework Farm is evidence of the viability of farmlands in the Arcadia Focus Area. Over half the lands are identified as prime farmlands by the U.S. Natural Resource Conservation Service. The entire focus area resides within Wayne County's Agricultural District #4, indicating a high level of agricultural protection. There are 6,616 acres enrolled in the agricultural tax abatement program.



Including the Peacework Farm, there are several pieces of protected lands along corridors in the Arcadia Focus Area. The planned Wallington to Newark Trail presents an opportunity for the GLT to encourage connection of protected lands. Further, Ganargua Creek is a possible locus for conservation in the southern portion of the focus area.

Map Copyright: Copyright Genesee Land Trust 2007  
Projection: NAD 1983 UTM Zone 18 N  
Maps Units: Meters  
Photos: Courtesy of the Cornell team

Faculty Advisor: Ole Amundsen III  
Contributors: Meira Hertzberg, Evelyn Israel, Kate McConnell, Andy Sauer, Michelle Striney, Kaustubh Tamaskar, Neha Verma, Krisztian Varsa, Abbie Webb