



Cornell Waste Management Institute

Soil and Crop Sciences Section, School of Integrative Plant Science

Bradfield Hall, Ithaca, NY 14853

607-255-1187 · cwmi@cornell.edu · cwmi.css.cornell.edu

Two-bin Composting Unit

This compost bin plan (page 2) is a two-bin system. Each bin is 6 feet wide based on the size of the bucket the school for which these plans were made uses to turn the material, as well as the amount of organics they have to compost. Your school, household, community garden, restaurant, etc. may need to size the bin(s) differently depending on the amount of organics generated, whether or not you will be turning, how turning will occur (by hand or with a bucket) and the size of the bucket. Keep in mind though, that for composting to occur properly bins must be at least 1 cubic yard (3' x 3' x 3'). This plan can be converted to a three-bin system by adding another section.

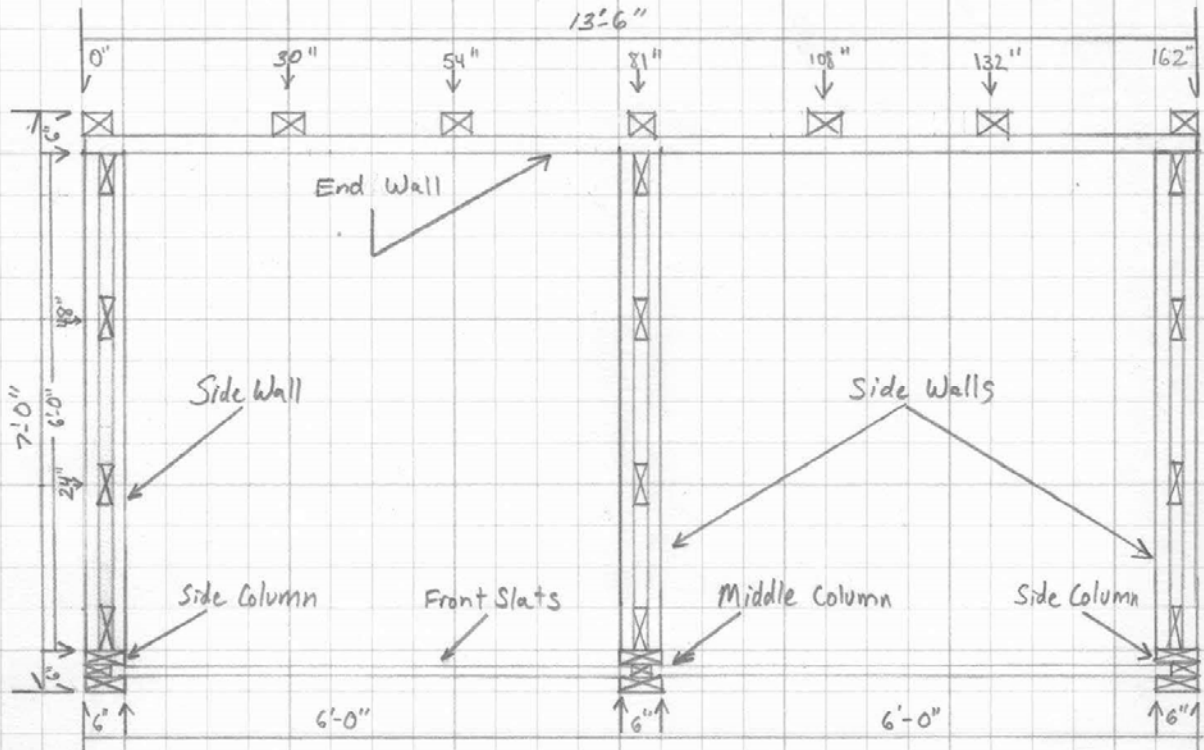
Pictures below were taken at the Seneca Falls School District, Seneca Falls, NY.



Photos (above) courtesy of Barb Reese, Seneca Falls Middle School.



Thanks to Sayre Stevens (formerly with Cornell Cooperative Extension of Jefferson County) for photo and bin plans.



2-Bin Composter
Top View SSS 2012

Materials:			Full Length	Cut into	Qty	Cut Length
Use	Qty	Dimension				
End Wall:	4	4x4	12'	→	7	72"
"	12	2x6	14'	→	12	13'-6"
Side walls:	6	2x6	12'	→	12	72"
"	36	2x6	12'	→	72	72"
Columns:	3	2x6	12'	→	6	72"
"	2	2x4	12'	→	3	72"
Slats:	12	2x6	14'		24	74"