



## BRIEFS

### Chris Owens to Serve as Acting Research Leader

Dr. Christopher Owens will serve as Acting Research Leader for the Grape Genetics Research Unit, Geneva, NY, from January 21, 2007 until May 19, 2007.

Dr. Owens received his Ph.D. in Plant Breeding and Genetics from Michigan State University in 2002, his Master's in Pomology from Cornell University in 1997 and his Bachelor's Degree in Horticulture from the University of Maryland in 1995. He joined ARS at Geneva in 2002 and currently holds Adjunct Assistant Professor positions with the Department of Horticulture at Cornell University and the University of Arkansas.

### Sustainable Viticulture a Major Focus

One of the major topics at the upcoming Viticulture 2007 conference in Rochester is, "Sustainable Viticulture: What it means, why it's important, and how it works."

Virtually all morning sessions on Thursday, February 8 will address this topic, beginning with a general session for all participants that will include several prominent speakers from California. While some people think "sustainable viticulture" means growing organic grapes, in fact it encompasses a much broader range of practices and activities.

"Sustainable in the broadest sense means being able to stay in business," said Dr. Tim Martinson of Cornell Cooperative Extension, who will coordinate the opening panel discussion. "It means environmentally responsible farming, sound business planning, and responsible financial operations, among other things."

Karen Ross, President of the California Association of Winegrape Growers (CAWG)

*(Continued on page 2)*

## Distinguished Faculty Members at Cornell University Appointed to Leadership Team



Jan Nyrop



Barb Knuth

Cornell University Photography

Distinguished faculty members Barbara Knuth and Jan Nyrop have joined Cornell University's leadership team and accepted appointments as co-senior associate deans of the College of Agriculture and Life Sciences (CALS).

Responsibilities include faculty affairs—which involves program reviews, hiring, tenure and promotion—sponsored research, and decision making over authorization of College funds as matches for research proposals, and vetting of Memoranda of Understanding for programs and collaborations with other universities and organizations.

"I'm delighted that both Barb and Jan have agreed to be the new senior associate deans of the College. Each is dedicated to the excellence of the College, and having two senior associate deans will improve the responsiveness from the office," said William Fry, former senior associate dean of CALS, who has now returned to full-time teaching and research in the department of plant pathology on the Ithaca campus. "They will make a great team."

The position of senior associate dean is being split between two individuals as is done in the College of Arts and Sciences. This decision was based on an observation by Susan A. Henry, the Ronald P. Lynch Dean of Agriculture and Life Sciences, and an ad hoc committee of respected faculty leaders, that the role had become too complex and demanding for a single person, particularly if he or she was also expected to maintain an active program of teaching, research or extension.

Both newly appointed senior associate deans have administrative experience at the level of department chair—Knuth in the department of natural resources since 2002, and Nyrop in the department of entomology on the Ithaca campus since 2004.

*(Continued on page 2)*



(BRIEFS, continued)

will be the lead speaker on how the California Code of Sustainable Winegrowing Practices has changed the California grape and wine industry. CAWG has been in the forefront of sustainable viticulture in California, and has received significant government recognition for its innovation and efforts.

Then a wine grape grower from the Lodi, CA region, Bruce Fry of Mohr Fry Vineyard, will discuss the practice and importance of a sustainable program to individual farm operations. Additional perspectives will be shared by John Williams of Frogs Leap Winery of the Napa Valley. And Jamie Hawk of Cornell Cooperative Extension's Finger Lakes Grape Program will report on developments in sustainability in New York State.

Other topics pertaining to various aspects of sustainability include:

- The outlook on immigration reform and labor supply for vineyards
- Specifics of sustainable grape growing, wine-making, and energy saving techniques in wine production
- Wastewater management issues for wineries
- Access to capital—financing the family farm

"These are all vital topics for the future of our industry," said Jim Bedient, Chairman of the Viticulture 2007 committee and of Winegrape Growers of America. "One great thing about this industry nationwide is that we all share important information so we can all advance together. We welcome and thank our colleagues from California and elsewhere."

*Jim Trezise, Wine Press*

## LEAD New York Program Accepting Applications for Class 12

The Empire State Food and Agricultural Leadership Institute, or LEAD New York, is now accepting applications for its upcoming class. Invitations have been sent out to an extensive prospect list, but LEAD is inviting anyone interested in the program to apply. The application deadline is March 1, 2007.

LEAD New York is a two-year leadership development program, consisting of

*(Continued on page 3)*

(DISTINGUISHED FACULTY, continued)

Knuth has been with Cornell for over two decades. She was hired as an assistant professor in 1986, was promoted to associate professor in 1992 and full professor in 2001. She earned bachelor's degrees in zoology and interdisciplinary studies in 1980 from Miami University, where she also received a master's degree in environmental sciences two years later. In 1986 she received a Ph.D. in fisheries and wildlife sciences from Virginia Tech University.

In addition to her new role as co-senior associate dean in CALS, Knuth is a professor of natural resource policy and management and co-leader of the Human Dimensions Research Unit in the Department of Natural Resources. She teaches Environmental & Natural Resources Policy Processes. She is a past-president of the American Fisheries Society and currently serves as vice president of the World Council of Fisheries Societies.

Nyrop began at the NYS Agricultural Experiment Station as an extension associate in the Integrated Pest Management program in 1982. He then shifted to the department of entomology in 1985 as an assistant professor, was promoted to associate professor in 1992, and full professor in 1999. He received his B.S. in wildlife ecology from the University of Maine in 1977, earned two master's degrees from Michigan State University in 1979 and 1982, respectively—one in entomology and the other in systems engineering—and received a Ph.D. in entomology, also from Michigan State, in 1982.

Nyrop's research has three programmatic themes; biological control, pest control decision making, and quantitative population

ecology. Along with his research, he—like Knuth—has a strong commitment to teaching; he currently helps lead lectures in a course entitled "Natural Enemies and Invasive Species," in collaboration with Ann Hajek on the Ithaca campus.

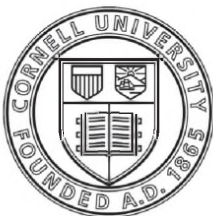
"CALS is and will continue to be a key agent for change in New York, the nation and the world, by educating and motivating students, by solving diverse problems that range from farm profitability to personal health, and by engaging in scientific discovery that lays the foundation for the future," said Nyrop. "To have this opportunity to help this remarkable institution will be invigorating, challenging and very rewarding."

*T. Krakowiak*

The Office of the Senior Associate Dean exists to facilitate the programs of the College. Many activities focus on faculty affairs and include:

- coordinate and aid faculty searches
- aid chairs and candidates with academic promotions
- oversee the selection of department chairs
- coordinate and assist facilities projects
- oversee Environmental Health and Safety issues
- oversee space allocations to departments
- assist the CALS Faculty Senate
- oversee the office of Human Resources in the College
- assist the development and support of sponsored projects
- approve and coordinate faculty leaves

In addition to these regular activities, the office sponsors a diversity of special projects during the year. This office also aids faculty and chairs with appropriate referrals to the correct College and University office.



**Cornell University**  
**College of Agriculture and Life Sciences**



## Viticulture Leader Promotes Better Science for Better Grapes; Wins Excellence in IPM Award

Tom Davenport's parents didn't want him coming back to the family farm once he finished school. They hoped for a better life for him. But Davenport wanted to stay in agriculture.

Davenport's first job out of college as a field rep for National Grape Cooperative took him into vineyards across New York and several other states. His job: helping growers put scientific research to use on their farms, using better methods to grow better grapes. The Cooperative is the parent company of Welch's Grape Juice.

Now, as director of viticulture for National Grape Cooperative, Davenport has received an "Excellence in IPM Award" from the New York State Integrated Pest Management (IPM) Program at Cornell University for his outstanding work in promoting least-toxic solutions for vineyard pest problems.

"Tom has done exceptional work behind the scenes in making sure that growers, land-grant researchers, and Cooperative Extension educators are on the same page in the same book," says Don Rutz, director of the New York State IPM Program. "Whether he's in a vineyard off Lake Erie or in Washington, D.C., Tom's contributions in finding bold new ways to bring sustainability to the farm and his industry can't be overlooked."

The first successful IPM tactic that Davenport helped fund was scouting methods developed at Cornell University for grape berry moth, perhaps the most destructive insect pest of grapes.

"That breakthrough potentially saves our members about \$2.5 million a year in pesticides they don't need to use," Davenport says. "Now growers routinely scout for about a dozen pests that range from insects to weeds to plant diseases."

National Grape Cooperative's 1,300 members farm 50,000 acres in five states and one Canadian province. Many vineyards are sited on lakeshores. Scouting techniques and other IPM methods, Davenport notes, are essential in protecting watershed from runoff.

Many of National Grape's members offer their farms for research projects. "The innovators are the ones who are willing to be guinea pigs," Davenport says. "They maintain close working relationships with researchers, Cooperative Extension, and us."

Davenport receives his award on February 8 at Viticulture 2007 at the Rochester Riverside Convention Center in Rochester, NY.

To learn more about IPM, go to [www.nysipm.cornell.edu](http://www.nysipm.cornell.edu).

*M. Woodsen*

*(BRIEFS, continued)*

50 days of seminars, workshops, and field travel experiences both in and out of New York State. It is designed for women and men who provide leadership to the food and agricultural industry. Selected participants have demonstrated their leadership abilities and have the potential for further leadership and development. This exciting program has a significant impact on its participants and the businesses and organizations they lead. As one current class member puts it: "LEAD has had a more significant impact on how I run my farm than my four-year college degree in agriculture." The training program focuses on these major areas:

- Leadership Skill Development (public speaking, meeting management, listening skills, etc.)
- Motivation towards civic engagement and participation in the public policy process
- Greater understanding of important agricultural issues and how we fit into a global food system
- Develop and cultivate leadership networks with other leaders around the state, nation and world
- LEAD graduates hold prominent leadership positions in New York State agriculture.

One look at the board roster for virtually any New York agricultural organization will yield several LEAD graduates at the helm. Too, many of our 313 alumni serve in local, state and federal government positions, not-for-profit organizations, and educational institutions. As one graduate put it: "Lead-NY was an eye-opening experience for me. I not only made lifelong friends, I also learned key skills that have proved useful throughout my career. Lead-NY changed my perspective and has helped me be a more knowledgeable advocate for agriculture."

Lead graduates from the "local community" include: Kevin Maloney, Linda McCandless, Laura Pedersen, and Marc Smith.

For more information or to obtain an application form, anyone interested should contact Larry Van De Valk, Director, LEAD New York Program, 114 Kennedy Hall, Cornell University, Ithaca, NY 14853 (607) 255 - 7907, [lv4@cornell.edu](mailto:lv4@cornell.edu). Applications are also available on the web at [www.leadny.org](http://www.leadny.org).



- Celebrating the Past
- Shaping the Present
- Inspiring the Future

**Join us at our 125th Anniversary  
Open House September 15th, 2007**





## CALENDAR of EVENTS

FEB 2 - 16, 2007

## SEMINARS

### ENTOMOLOGY

Dr. James Hagler  
USDA-ARS  
US Arid Land Agricultural Research  
Center Maricopa, AZ

"Protein marking

Arthropods for Dispersal Studies"

**Date:** Tuesday, February 6, 2007  
**Time:** 10:30 AM (Coffee 10:15 AM)  
**Place:** 310 Barton Lab

### HORT SCIENCE

Lailiang Cheng  
Associate Professor  
Horticultural Sciences  
Cornell University

"When and how Much Nutrients are required to Grow Good Size Gala"

**Date:** Monday, February 5, 2007  
**Time:** 11:15 AM - 12:00 PM  
**Place:** Food Science & Technology  
Conference Room  
Food Research Laboratory,  
Room 251

## TAEKARDIO

TaeKardio is cancelled on Monday, February 5th due to a scheduling conflict.

Classes will resume on Wednesday, February 7th in the Jordan Hall Auditorium at Noon.

**PIZZA SALE** to benefit Troop 4, Geneva. \$11 for One Large Pizza (cheese + one topping) from Cam's New York Pizzeria of Geneva, 476 Exchange St. - 789-6297

Must present coupon before ordering. Coupon is valid January 8th - February 25, 2007. Please call Sherri Tennessee at 2347 to purchase tickets.

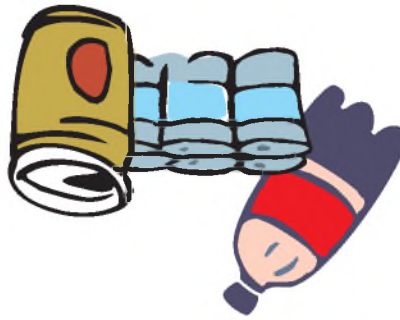


### ZITI DINNER

to benefit the Geneva High School Class of 2007 sub-stance-free graduation party, Tuesday, February 6, 2007 at Uncle Joe's Pizzeria, 99 Genesee St. from 4:30 - 7:30. Eat-in or Take-out. The price is \$7.00 for ziti, meatballs, tossed salad and bread. Please see Nancy Long (X2288) for tickets. Thank you for your support.

### BOTTLE & CAN DRIVE to benefit

the Geneva High School Class of 2007 substance-free graduation party, Saturday, February 10, 2007 at Hydrant Hose Fire Co. from 9 AM - 1 PM. Please contact Nancy Long (X2288) to arrange for pick-up. Thank you for your support.



## GUIDELINES FOR CLASSIFIED ADS

Free to members of the Station community, ads are printed as space permits. Remember to:

Include name, campus phone number and email address.

Limit ad to 20 words or less.

Ads selling goods or commercial services on an ongoing basis or promoting employment outside Cornell cannot be accepted.

To run your ad more than once, you must resubmit it.

Station News is not responsible for errors or unprinted ads, and retains the right to edit or reject any submission.

E-mail ads to: stationnews@nysaes.cornell.edu

## CLASSIFIEDS

**FOR RENT:** 1 & 2 bedroom apartments in Geneva. Newly remodeled, close to downtown, hospital, and NYSAES. Quiet neighborhood. The 1 bedroom is \$700/month and the 2 bedroom is \$800 per month. All utilities included (gas, electric, heat, water & sewer, trash & snow removal). Off street parking. For more info contact ds223 or call 789-2612.

**FOR SALE:** Lake Home. Beautiful year-round home on Seneca Lake for sale. Just 8 miles South of Geneva. 50 ft. of private lakefront, with house on a larger lot. Three bedrooms and large finished room in basement. Hardwood floors. Full attic and basement, and 1.5 car garage. \$225,000. For more info contact jag7 or call X2209.

## HELP WANTED

**Area Fruit Specialist -- Tree Fruit and Berry Horticultural Practices** ([http://hosts.cce.cornell.edu/admin/carecrops/EA\\_Hort.htm](http://hosts.cce.cornell.edu/admin/carecrops/EA_Hort.htm)) close 2/28/2007

**Area Fruit Extension Educator -- Fruit Quality Management** ([http://hosts.cce.cornell.edu/admin/carecrops/EA\\_FQM.htm](http://hosts.cce.cornell.edu/admin/carecrops/EA_FQM.htm)) close 3/30/07

If you have any questions, contact Connie Kam at 607-255-0789 or [ck236@cornell.edu](mailto:ck236@cornell.edu).

## ASC

Cornell will reimburse employees who use personal vehicles for approved business related travel at the new prevailing rate of 48.5 cents per mile. The new rate for business miles is an increase from 2006 at 44.5 cents per mile. The IRS mileage rates can be found at: [http://www.payments.cornell.edu/IRS\\_Mileage\\_Rates.cfm](http://www.payments.cornell.edu/IRS_Mileage_Rates.cfm).

When submitting personal mileage reimbursement, please be sure to use the form on our website.

**New Faculty** visit <http://www.purchasing.cornell.edu/overview2.cfm> for purchasing information.