

Collaborative Service Models

Building Support for Digital Scholarship



Cornell University Library

Jason Kovari, Metadata Librarian. Humanities & Special Collections

Wendy Kozlowski, Science Data and Metadata Librarian

Danielle Mericle, Director, Digital Media Group

DCAPS

Digital Consulting & Production Services



dcaps.library.cornell.edu

About

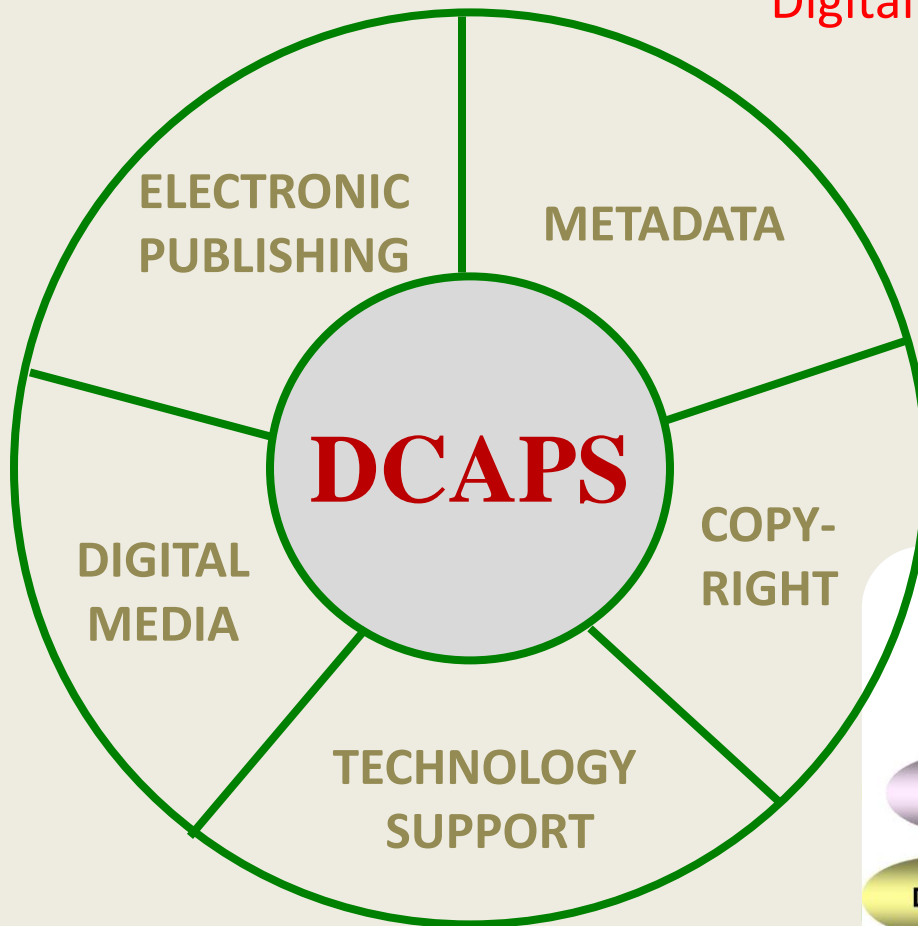
- Founded in 2003 to provide a “one-stop” approach to digital collection building
- Cost-recovery service model formulated for long-term sustainability of operation, with secondary account for “non-billables”
- Provides wide range of services, consultations and referrals campus-wide

DCAPS Services

- Digitization of library, university, or personal assets, including monographs, manuscripts, & photographic materials
- Color managed workflow
- Image processing & reformatting
- Development of metadata standards and guidelines
- Online collection delivery on standardized library platforms
- Project management services
- Web-design
- Limited support for a/v collections
- Archiving & preservation of university assets
- Copyright advice
- On-campus consultations (free of charge)

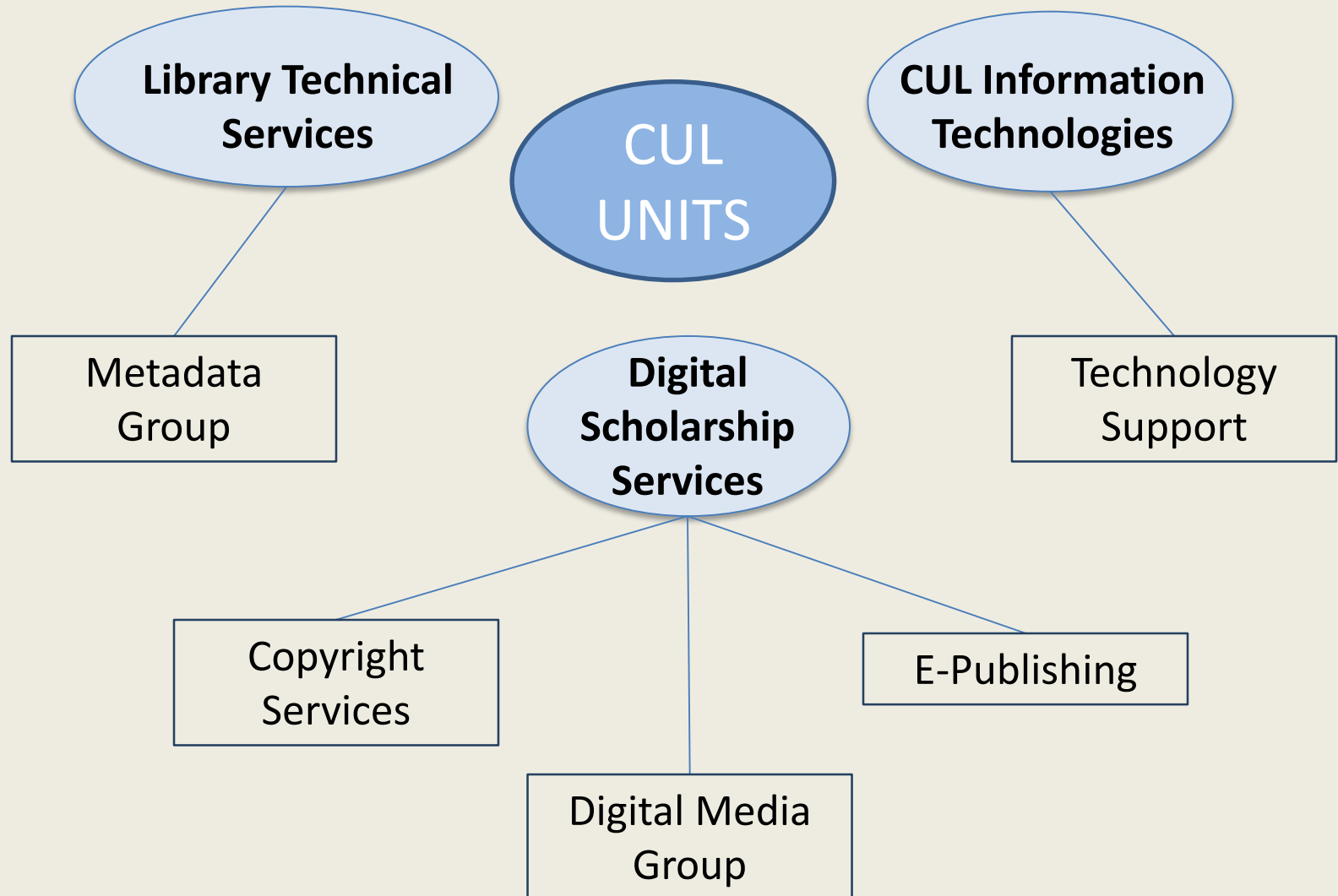


Digital Consulting and Production Services



Digital Consulting and Production Services

DCAPS within CUL



Campus-wide Digitization Efforts

Academic Technologies

- On-demand digitization for faculty and grad students
- Innovation in Teaching grants program
- Blackboard support

DCAPS/Olin Library (as described)

Other

- Faculty digitizing efforts



Johnson Museum

- High-end digitization of museum assets
- Partnership with DCAPS to deliver content via Luna

Mann Library

- Outsourced digitization of library assets
- Partnership with DCAPS to load content into DLXS

Cornell Business Services Digital Services

- Analog records conversion for department/university
- Outsourcing and referrals with DCAPS

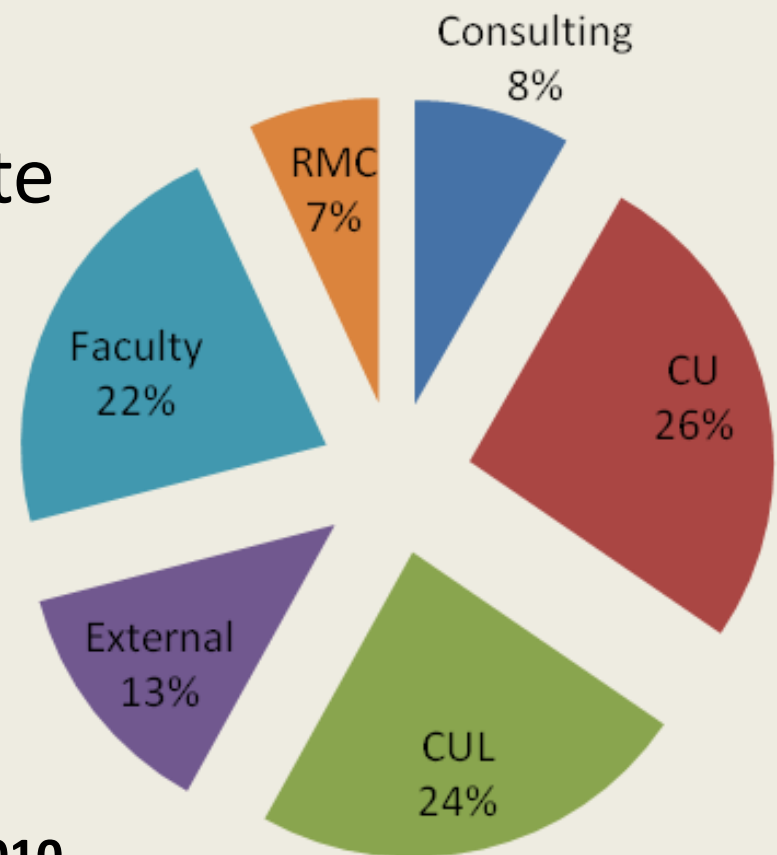
DCAPS in Detail

- Centrally managed projects
- Relatively small staff
- Full accountability: budget, timelines, deliverables
- Roughly 65% cost-recovery; 35% institutional support
- Large and small scale projects: patron requests to mass digitization efforts
- Partnerships with College of Arts & Sciences, Johnson Museum, College of Art, Architecture & Planning
- Consultation and advice for non-DCAPS but Cornell-based projects to support best practices

Digital Consulting and Production Services

Overview of Project Types

- RMC patron & exhibit requests
- Faculty requests
- Departmental and Institute
- Large scale: grants, Adam Matthews, A & S collaboration



Client Types 2009-2010

Digital Consulting and Production Services

Visual Resources for Teaching

- Digitize analog visual resources
- Capture metadata
- Upload to LUNA and ARTstor



<http://library24.library.cornell.edu:8280/luna/servlet/s/u9219j>

<http://library.artstor.org/library/welcome.html#2|1031|Cornell20Knight20Visual20Resources20Collection>

Enabling Collaboration

- **SharedShelf**

Collaborative image collection building and maintenance, within and beyond the library

- **Kaltura**

Streaming audio and video allowing aggregation of library a/v assets

- Collection
- eCommons
- On-demand

A&S Grants Program

- Create digital collections based on resources regularly used in teaching or research
- Digitize CU collections instrumental in supporting learning, teaching, and research at Cornell.
- Convert materials held by other institutions to support teaching and research at Cornell
 - combining dispersed resources to create new and enriched ones.

<http://dcaps.library.cornell.edu/asgrants/>

RDMMSG

Research Data Management Service Group



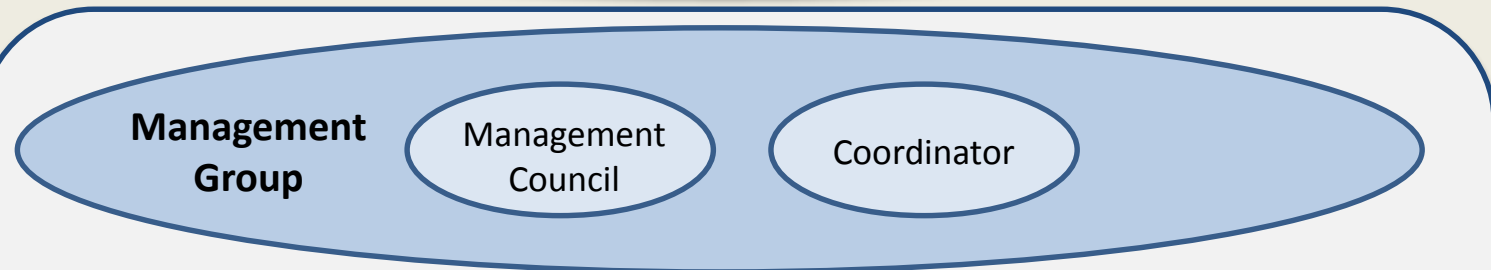
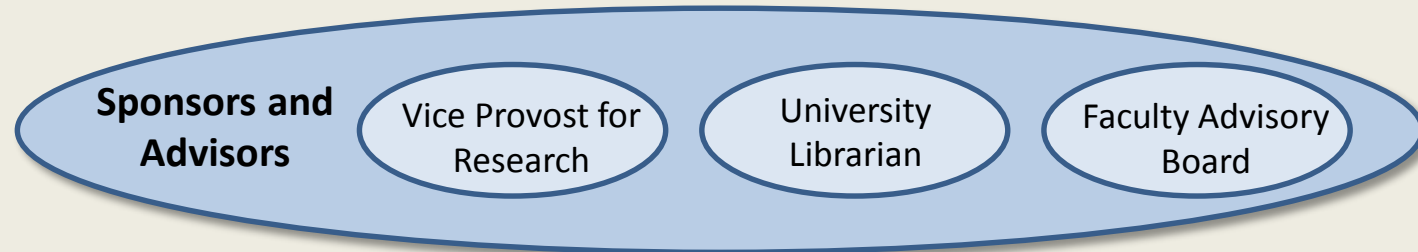
data.research.cornell.edu

About

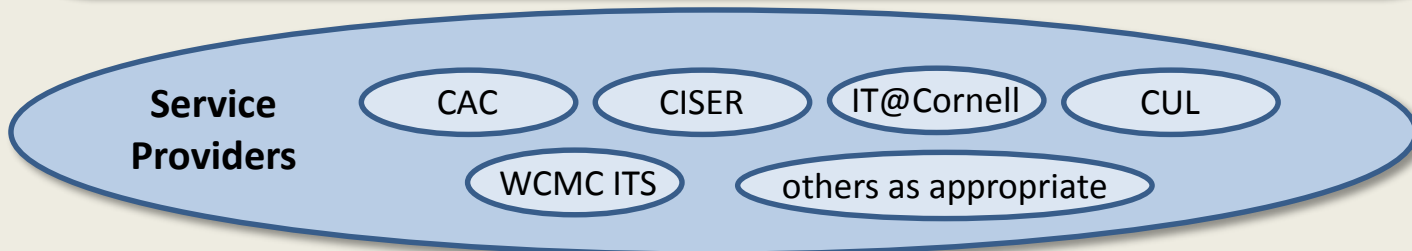
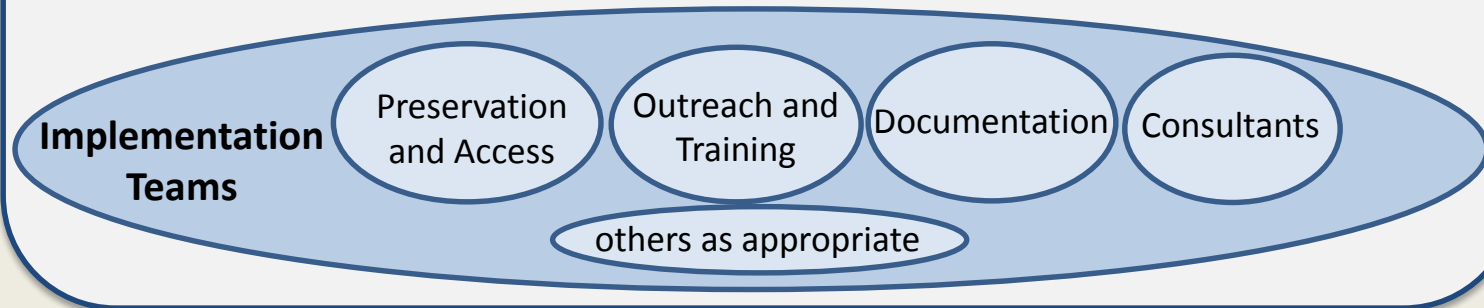
- 2008 → 2010 : DISCOVER Research Service Group
Data Intensive Science Organization for Virtual Exploration and Research
- December 2010 : RDMSG
- Sponsorship: Cornell's University Librarian
Vice Provost for Research (OSP)
- Collaborative, cross-campus participation
- Provides wide range of services,
consultations and referrals campus-wide

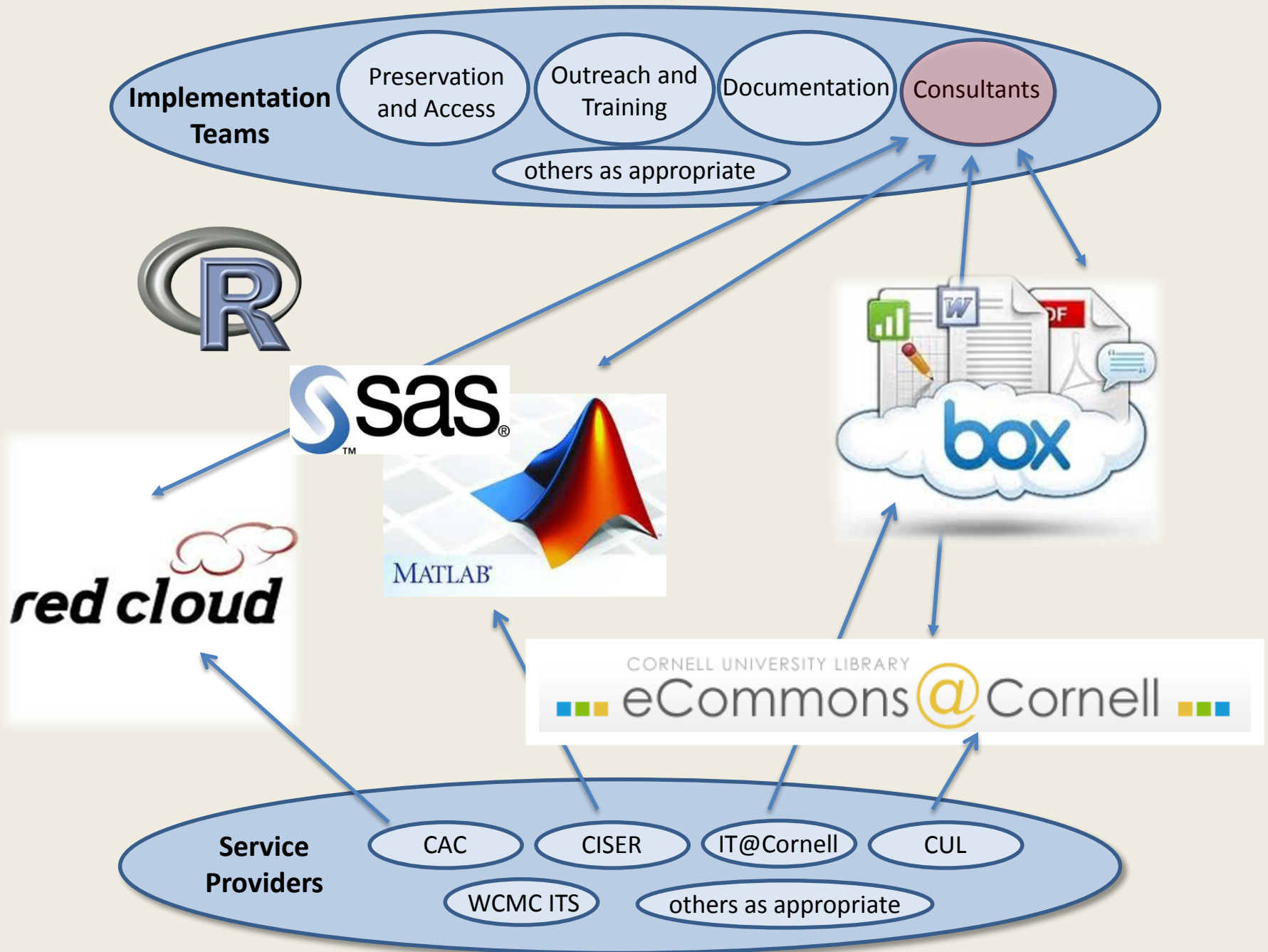
<http://www.flickr.com/photos/21709799@N03/3798486667/>

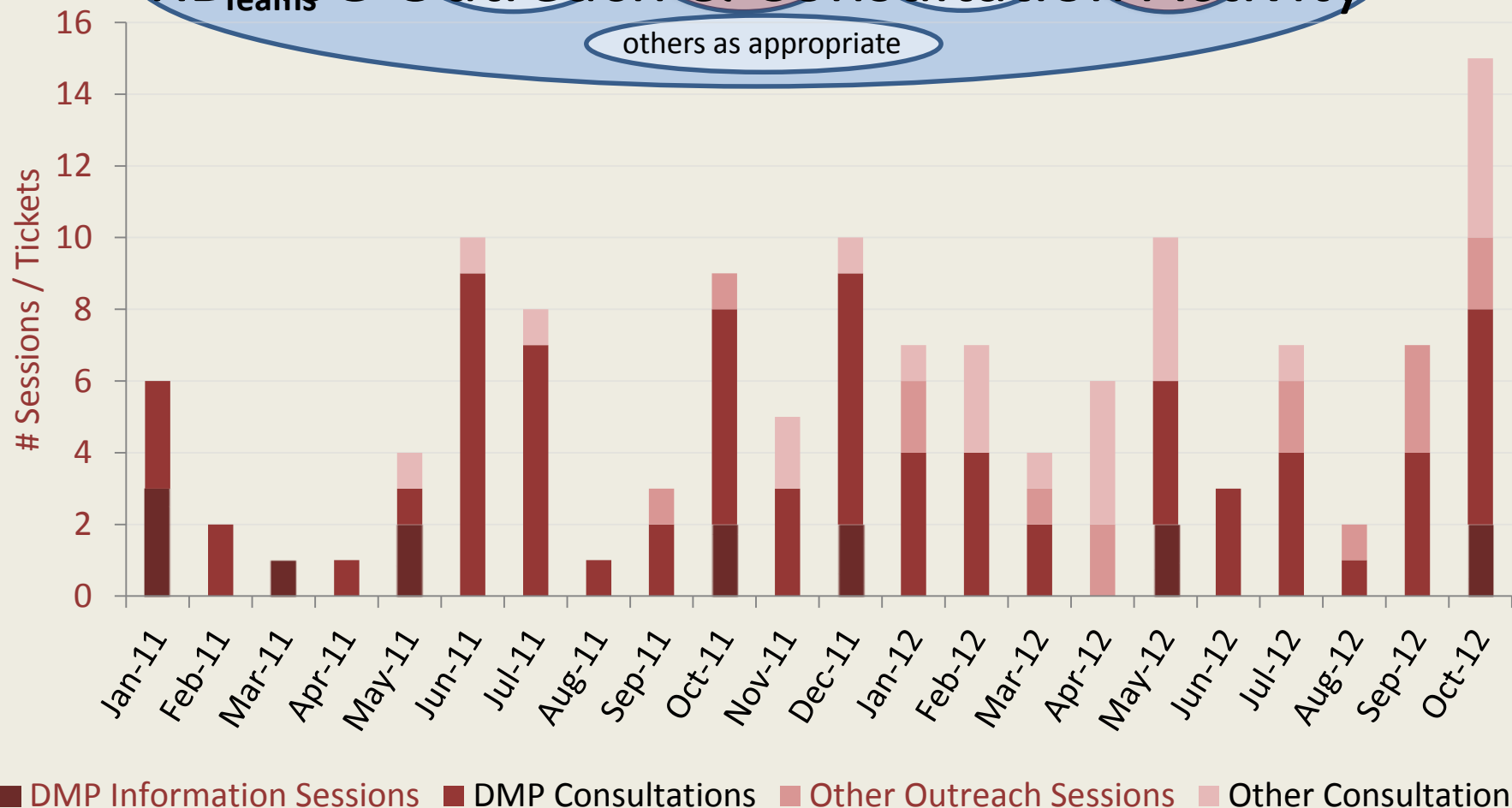
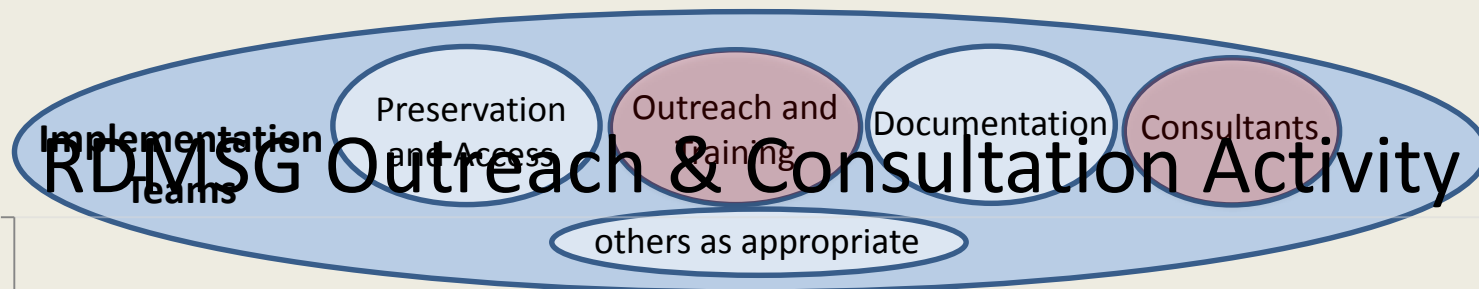




RDMSG Virtual Organization

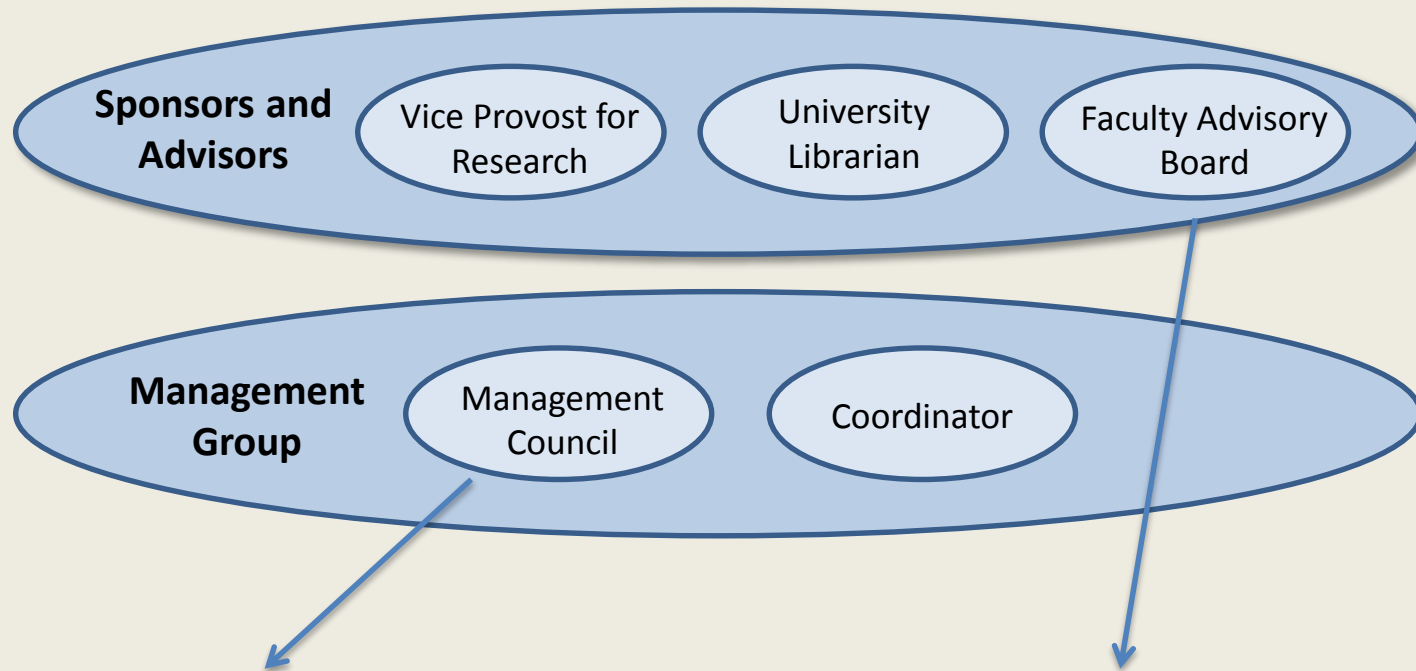






Total Outreach: ~ 570 people

Website Usage: >5,900 Unique Visits



Management Council

- Seven Members
- Directors, AULs, Faculty
- Meets Bi-Monthly

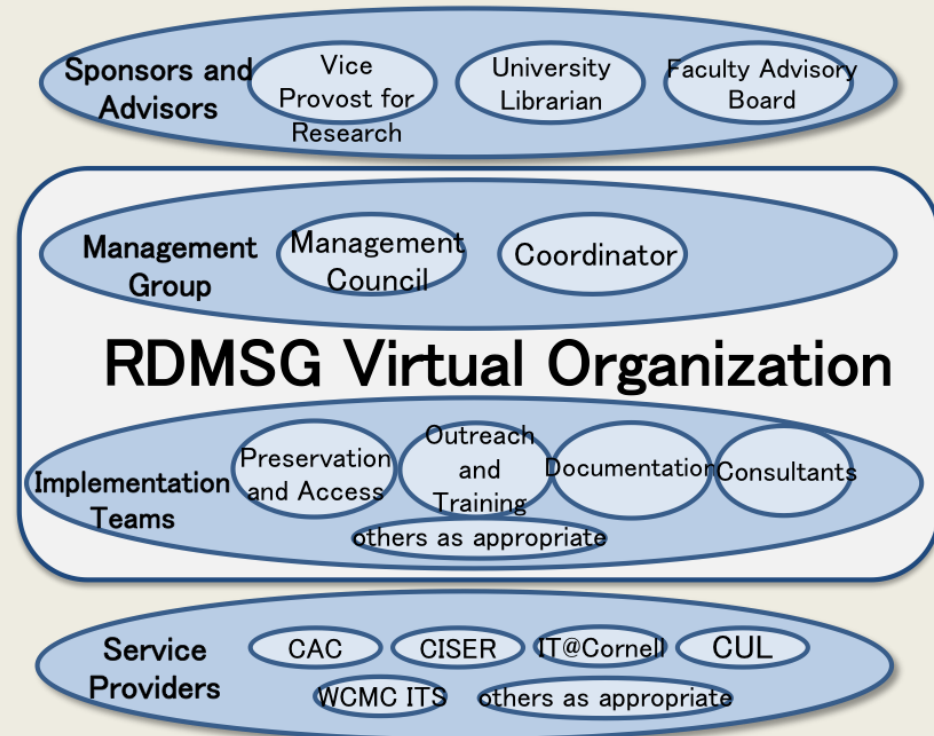
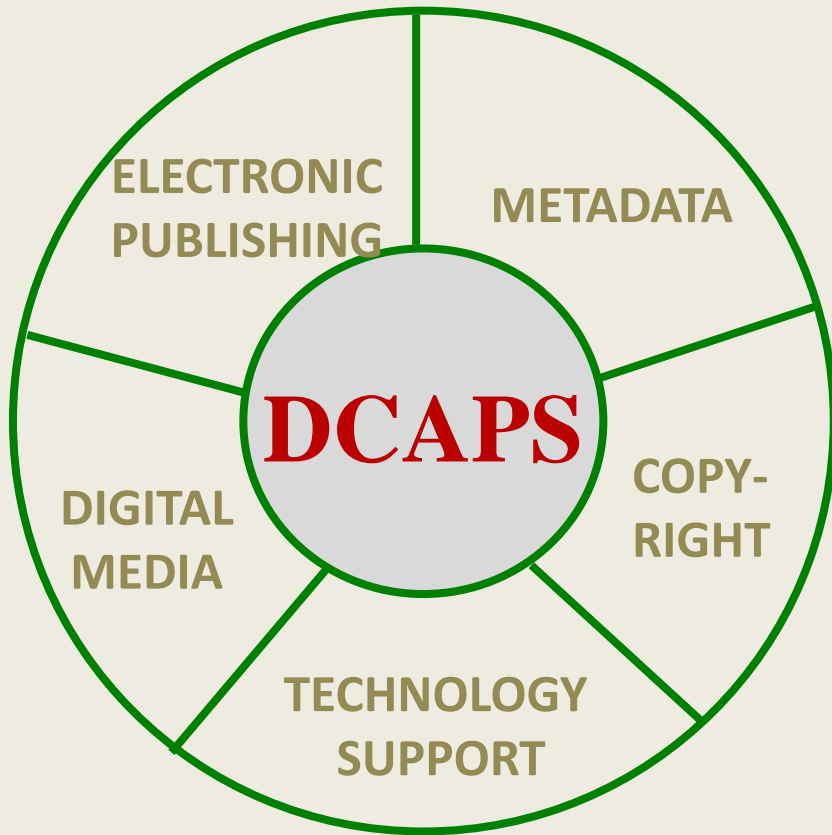
Faculty Advisory Board

- Eleven Members
- Faculty +
Research Support Officers
- Meets as needed

Data Management Services Challenges and Opportunities

- Commitment
 - Timing
 - Expertise
- Mission
- Operating Principles
- Communication
- Awareness
- Scope
- Content

Commonalities



Commonalities Services

Digital Scholarship collaboration with faculty

- Provide expertise on full life-cycle of project
- Facilitate deposit, discovery and preservation
- Co-write OR advise on grant applications

Commonalities

Position in the Library

“Offer consulting services for faculty and others to meet requirements of grant proposals and publications, including... research data management plans.... Continue to collaborate with... the Research Data Management Service Group (RDMSG).”

“Enhance on-demand specialized services to support faculty collections and a broad range of scholarly activities, including digitization, metadata creation, visual resource management, and online publishing.”

CUL Strategic Plan, Goal 3, p.6

<http://www.library.cornell.edu/aboutus/inside/strategicplanning>

Commonalities

Outreach

- Digital Scholarship library liaison program
- DCAPS staff engage at faculty meetings
- RDMSG shifting model

Commonalities Challenges

- Project to Program
 - Sustainability
 - Staffing
- Measures of Success
 - Follow-up
 - Statistics

Collaborative Service Models

Building Support for Digital Scholarship



Jason Kovari, Metadata Librarian. Humanities & Special Collections
Wendy Kozlowski, Science Data and Metadata Librarian
Danielle Mericle, Director, Digital Media Group